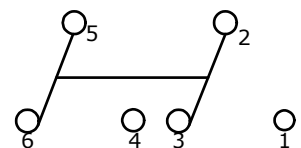
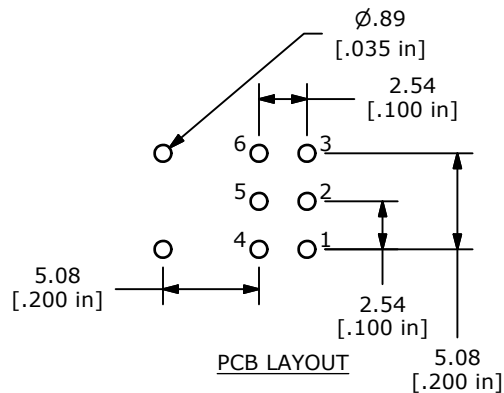


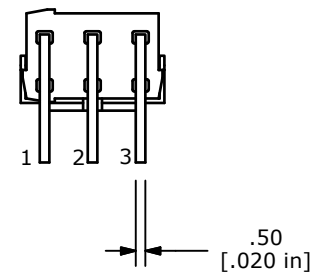
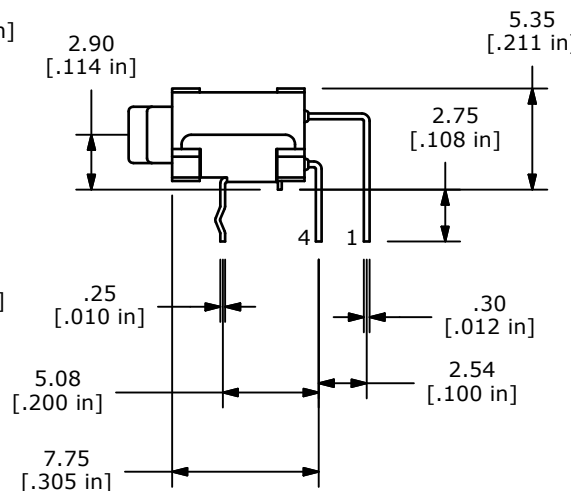
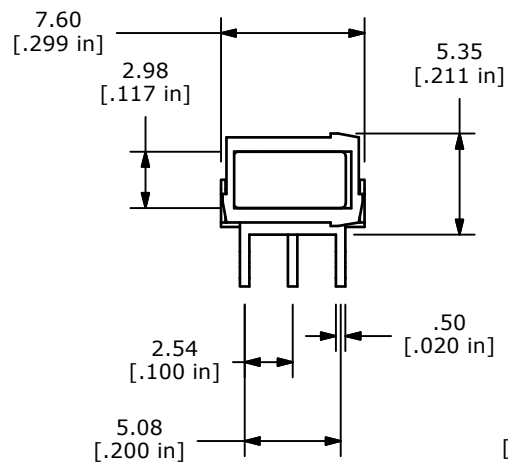
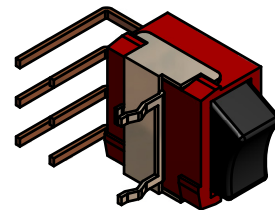
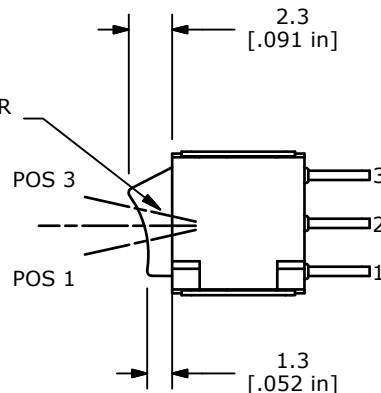
▲ SWITCH FUNCTION		
POS. 1	POS. 2	POS. 3
ON	NONE	ON
2-3; 5-6	NONE	2-1; 5-4



▲ CIRCUIT: DPDT  
ON - ON



R1 ROCKER  
▲ BLACK



- NOTE:
1. ALL DIMENSIONS IN MM [INCH]
  2. GENERAL TOLERANCE: X.X=±0.4  
X.XX=±0.25
  3. TERMINAL NUMBERS FOR REF ONLY
  4. CONTACTS: GOLD PLATED
  5. RATING: 0.4 VA max. @ 20V AC OR DC max.
  6. CONTACT RESISTANCE: <100 MILLI-OHM
  7. ELECTRICAL LIFE: 6,000 MAKE-AND-BREAK CYCLES.
  8. INSULATION RESISTANCE: 500 MEGA-OHM min.
  9. DIELECTRIC STRENGTH: 500 V RMS @SEA LEVEL.
  10. OPERATING TEMP.: -30°C to 85°C
  11. ▲ DENOTES CRITICAL PARAMETER.
  12. SEAL RATING: IP67
  13. 2002/95/EC (ROHS) COMPLIANT



TITLE 400UDP1R1BLKM6RE				
SCALE 2.5:1	DATE 8/11/2015	DR rc	DWG T480001	REV A

A	21954	NEW RELEASE	8/14/15	rc
REV	PCR NO	DESCRIPTION	DATE	BY

THE INFORMATION CONTAINED IN THIS DOCUMENT IS PROPRIETARY TO E-SWITCH AND IS NOT TO BE COPIED OR TRANSFERRED