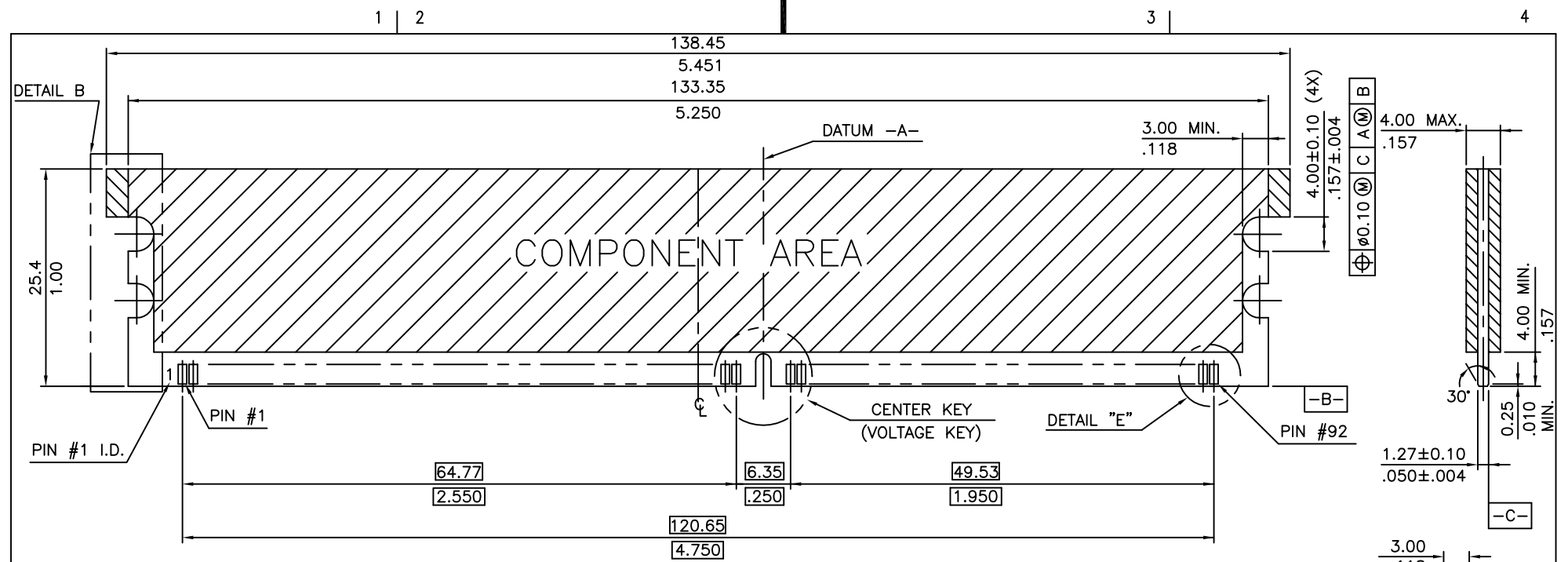


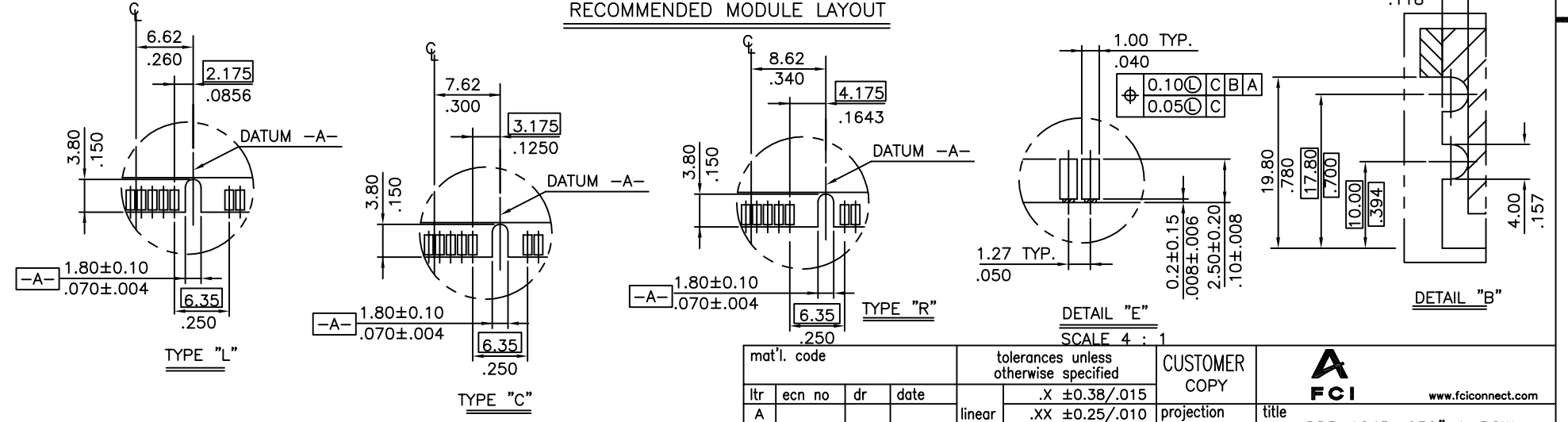


Tous droits strictement reserves. Reproduction ou communication a des tiers interdite sous quelque forme que ce soit sans autorisation ecrite du propriétaire. Propriete de c FCI. Droits de reproduction FCI.

All rights strictly reserved. Reproduction or issue to third parties in any form whatever is not permitted without written authority from the proprietor. Property of FCI. Copyright FCI.



RECOMMENDED MODULE LAYOUT

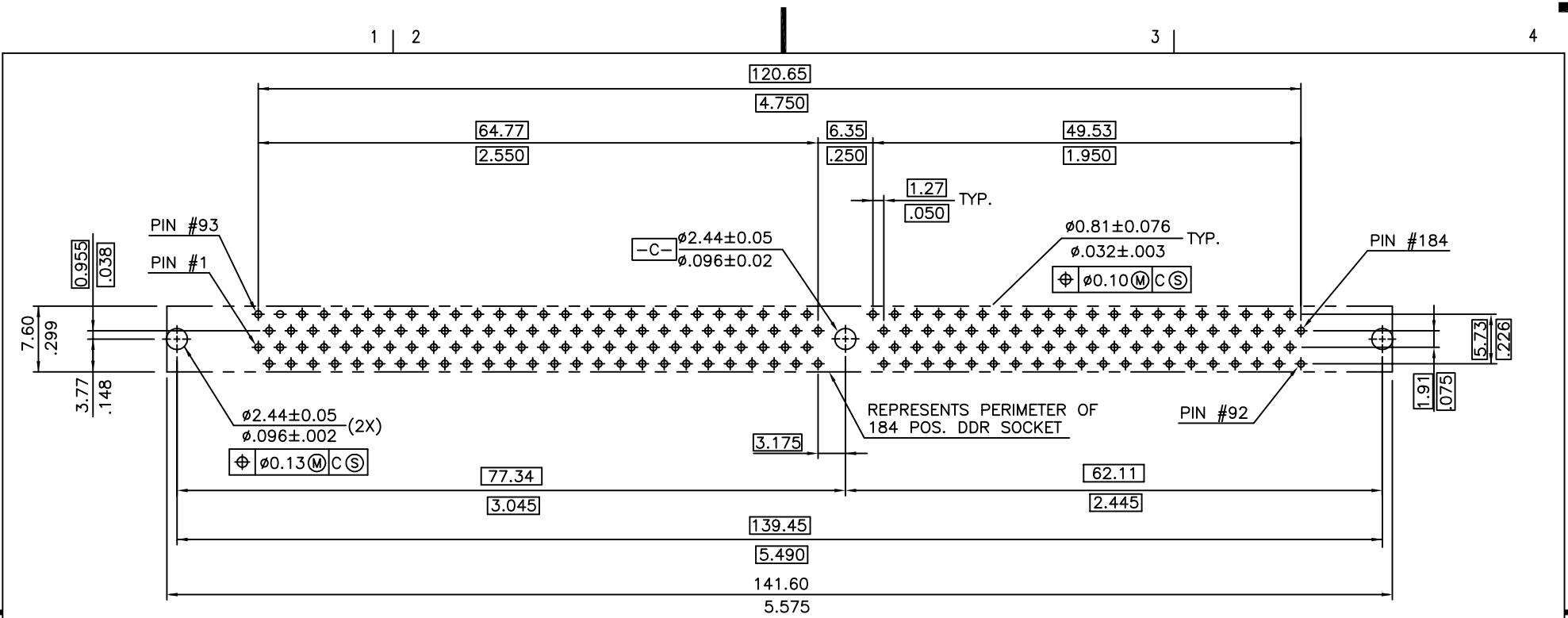


TYPE "R"	3.3 VOLT.
TYPE "L"	2.5 VOLT.
TYPE "C"	1.8 VOLT.
CENTER KEY	DESCRIPTION

mat'l. code		tolerances unless otherwise specified		CUSTOMER COPY		FCI www.fciconnect.com	
ltr	ecn no	dr	date	linear	.X ±0.38/.015	projection	title
A					.XX ±0.25/.010		DDR 184P .050" 1-ROW, V/T ASS'Y PLASTIC POST
				angles	.XXX ±0.15/.005		
				dr	0° ±2'	MM	product family
				enr	MAGGIE WU 04/12/02	scale	DDR
				chr	JEFF.HSIEH 04/12/02	1.5:1	code
				appd	JEFF.HSIEH 04/12/02	A4	size
					JENN TSAO 04/12/02		dwg no
sheet index	revision sheet						10002394
							code
							526
							Printed: Jul 28, 2010

Tous droits strictement réservés. Reproduction ou communication a des tiers interdite sous quelque forme que ce soit sans autorisation écrite du propriétaire. Propriete de c FCI. Droits de reproduction FCI.

All rights strictly reserved. Reproduction or issue to third parties in any form whatever is not permitted without written authority from the proprietor. Property of FCI. Copyright FCI.



DDR ASSEMBLY PART NUMBER  
10002394 - □ □ □ □

RECOMMENDED CIRCUIT BOARD HOLE LAYOUT

STYLE  
1 : FOR 3.3 VOLT.  
2 : FOR 2.5 VOLT.  
3 : FOR 1.8 VOLT.  
  
RESERVED  
0

CODE	CONTACT	SOLDERTAIL	UNDERPLATE	CODE	CONTACT	SOLDERTAIL	UNDERPLATE
2	15μ"(0.38μm) MIN. GOLD			7LF	15μ"(0.38μm) MIN. GOLD		
3	30μ"(0.76μm) MIN. GOLD	100μ"(2.54μm) MIN. TIN/LEAD	50μ" (1.27μm) MIN. NICKEL OVERALL	8LF	30μ"(0.76μm) MIN. GOLD	100μ"(2.54μm) MIN. 100% TIN	50μ" (1.27μm) MIN. NICKEL OVERALL
4	1μ"MIN.GOLD FLASH			9LF	1μ"MIN.GOLD FLASH		

TAIL LENGTH

CODE	DIM. "B"	TOLERANCE
1	2.29 .090	±0.25 ±.01
2	2.79 .110	±0.25 ±.01
3	2.67 .105	±0.25 ±.01
4	3.05 .120	±0.25 ±.01

COLOR OF HOUSING AND EJECTOR  
0 : BLACK HOUSING + IVORY EJECTOR

mat'l. code				tolerances unless otherwise specified				CUSTOMER COPY		 www.fciconnect.com	
ltr	ecn no	dr	date	linear	.X ±0.38/.015			projection		title	
B				angles	.XX ±0.25/.010					DDR 184P .050" 1-ROW, V/T ASS'Y PLASTIC POST	
				dr	MAGGIE WU	04/12/02	MM		product family		code
				enr	JEFF.HSIEH	04/12/02	1.5:1		DDR		TWN
				chr	JEFF.HSIEH	04/12/02	A4		size		sheet
				appd	JENN TSAO	04/12/02	10002394		dwg no		3 of
sheet index	revision sheet										