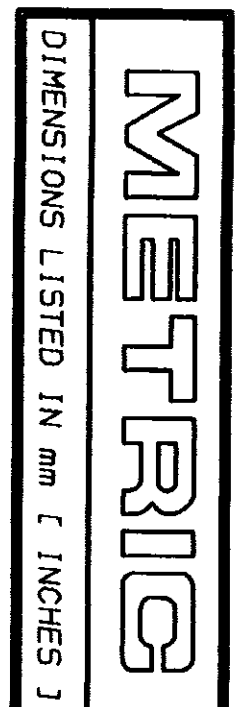
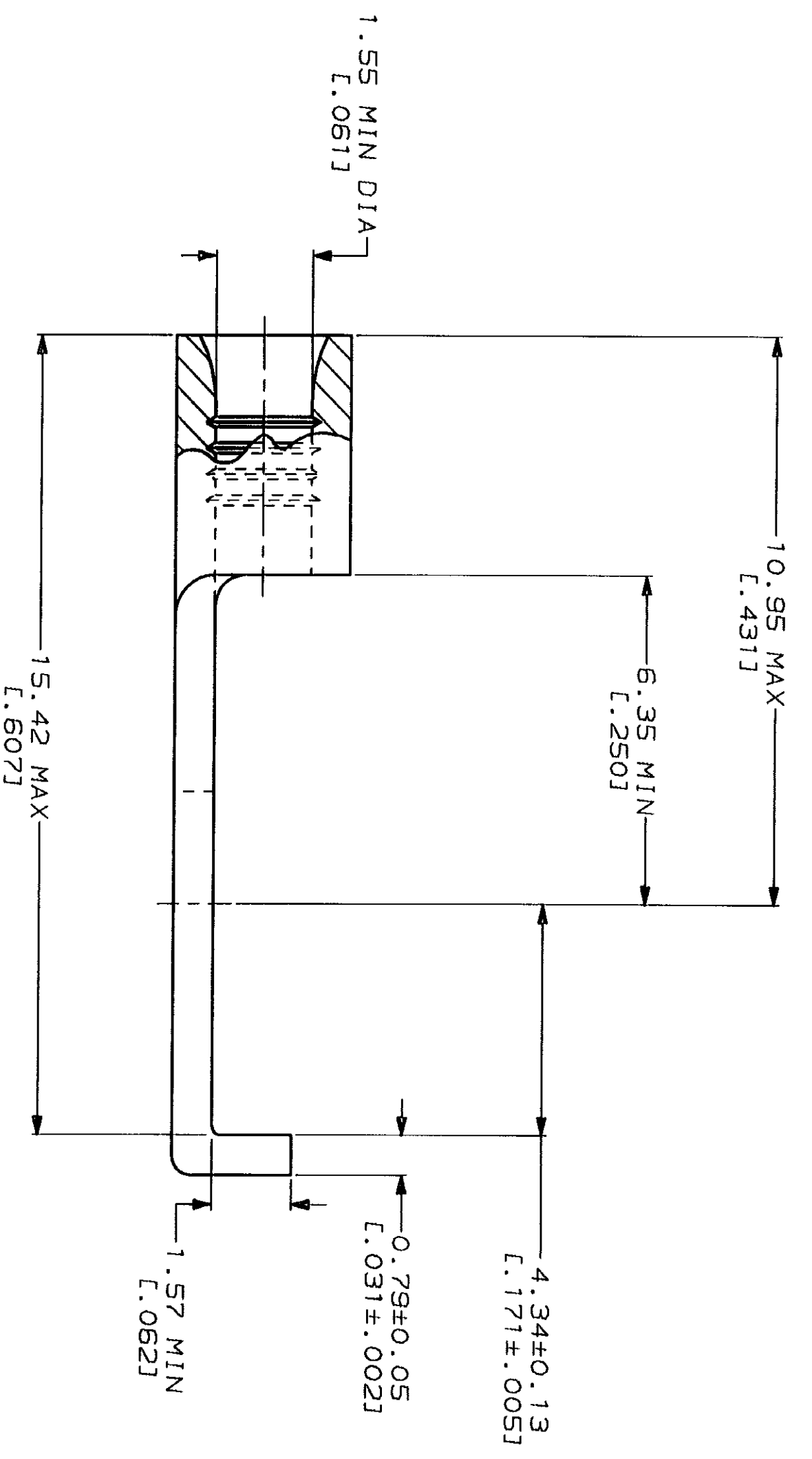
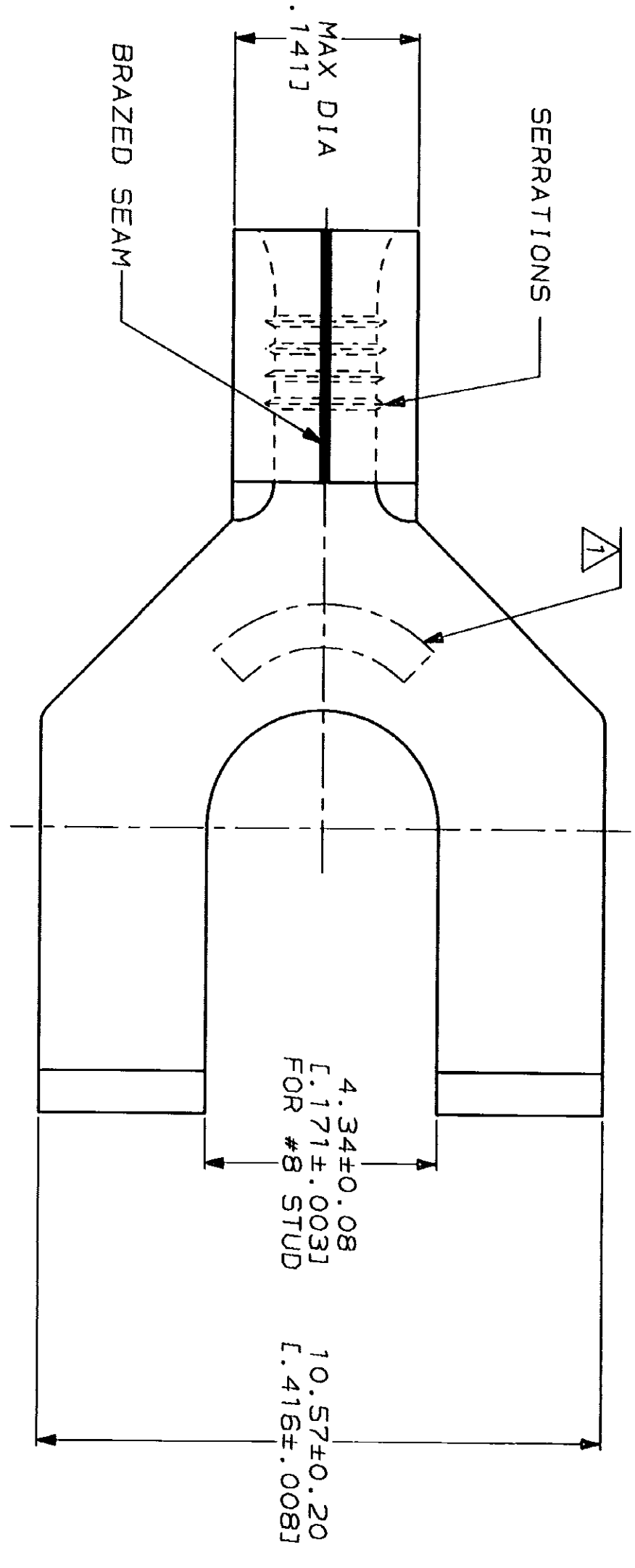


LOC	QTY	REV	DESCRIPTION	DATE	APP'D
G	14		REV. RDRW. & SH PKG PER 0720-0040-93	4-8-93	JL



AMP WIRE RANGE	JL E13288 Listed
22-16 AWG SOLID OR STRANDED	22-16 AWG SOLID OR STRANDED
LR7189 Certified	MILITARY P/N AND CLASS
22-16 AWG SOLID OR STRANDED	NOT APPLICABLE

STAMP AMP 22-18* APPROX AS SHOWN
22-16 TERMINALS ARE STAMPED 22-18 IN
ACCORDANCE WITH MILITARY SPECIFICATION
MIL-T-7928; COMMERCIAL WIRE RANGE IS 22-16



AMP INCORPORATED
CUSTOMER SERVICE SYSTEMS

FOR ADDITIONAL
PRODUCT INFORMATION OR
COPIES OF DRAWINGS
AND TECHNICAL DOCUMENTS
1-800-522-6752

FOR APPLICATION
TOOLING INFORMATION
1-800-722-1111

FOR ORDER ENTRY
1-800-526-5142

MAX RECOMMENDED OPERATING
TEMPERATURE: 170°C MAX

VOLTAGE RATING:
NOT APPLICABLE

WIRE CROSS SECTIONAL AREA RANGE:
0.26-1.65mm² [509-3,260] CIR MILS
SOLID OR STRANDED

DO NOT SCALE PRINT.
UNLESS SPECIFIED
DIMENSIONS IN mm FINISHES
TOLERANCES ON:
1. PLC DEC #
2. PLC DEC #
3. PLC DEC #
ANGLES

MATERIAL
COPPER PER
ASTM B-152
ANNEALED

FINISH
TIN PLATE
0.00254 [L.000100] MIN
THK PER MIL-T-10727

DR 4-8-93 TA BRINKMAN	CHK 4-8-93 DA PATTERSON	APPD 4-8-93 DE MILLER	APPD 4-8-93 JL HECKLEY
APPLICATION SPEC			
WEIGHT			

QUANTITY	PACKAGE TYPE	PART NO
100	LOOSE PIECE, BOX	8-323124-1
---	LOOSE PIECE	323124

AMP
AMP Incorporated
Harrisburg, PA 17105-3608

TERMINAL, FLANGED
SPADE, SOLISTRAND™

SIZE CAGE CODE DRAWING NO
SCALE 10:1 00779 323124