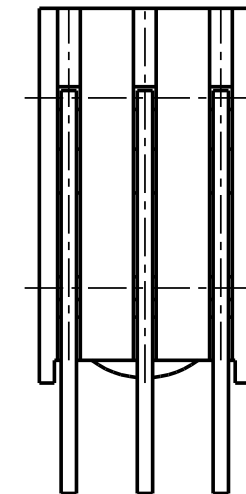
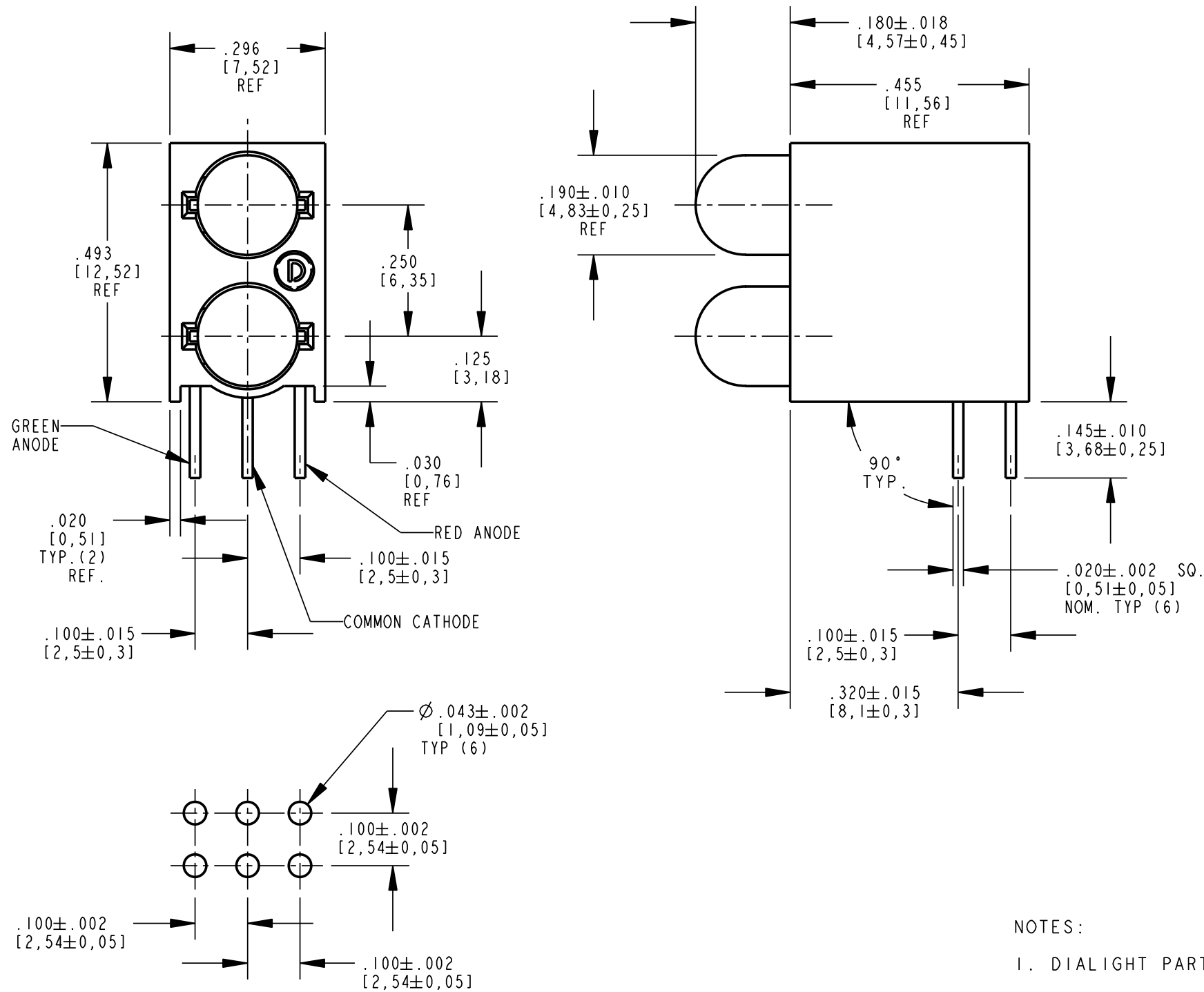


REV	ECN NO	REVISIONS	DRN	CKD	APP	DATE
A	—	NEW RELEASE	TC			

LED COLOR = RED / GREEN DIFFUSED						
OPERATING TEMPERATURES AT 25°C AMBIENT						
CHARACTERISTICS	COLOR	MIN	TYP	MAX	UNITS	TEST CONDITIONS
LUMINOUS INTENSITY	RED	2.1	5		mcd	If = 10mA
	GREEN	4.2	8			
FORWARD VOLTAGE	RED		2.1	2.5	V	If = 10mA
	GREEN		2.3	2.7		
REVERSE VOLTAGE	RED	5				Ir = 100μA
	GREEN	5				
PEAK WAVELENGTH	RED		635			
	GREEN		565			
DOMINANT WAVELENGTH	RED		626		nm	
	GREEN		569			
VIEWING ANGLE	RED		65		Degree	If = 10mA
	GREEN		65			

LED COLOR = RED / GREEN DIFFUSED		
ABSOLUTE MAXIMUM RATING AT 25 °C AMBIENT		
	RED / GREEN	UNITS
POWER DISSIPATION	135	mW
DERATE LINEARLY FROM 50°C	0.5	mA/°C
AVERAGE FORWARD CURRENT	25	mA
PEAK FORWARD CURRENT ( 1/10 DUTY CYCLE, 0.1 μs PULSE WIDTH)	90	mA
LEAD SOLDERING TEMPERATURE, 5 SEC., 1/16" FROM BODY	260°C FOR 5 SECONDS	°C
OPERATING TEMPERATURE	-20° TO +85	°C
STORAGE TEMPERATURE	-55 TO +100	°C



### RoHS Compliant 552-3511F

Part Numbers with the "F" suffix ending are RoHS Compliant. Packaging is marked with "RoHS Compliant" label or equivalent markings. Parts can be wave soldered, dip soldered or hand soldered using typical lead-free soldering process with max 260°C temp. for 5 sec.

### NOTES:

1. DIALIGHT PART NUMBER 552-3511F

THIS DRAWING AND THE CONTENTS HEREIN ARE CONFIDENTIAL AND THE SOLE PROPERTY OF DIALIGHT. REPRODUCTION OF THIS DRAWING OR CONSTRUCTION OF ANY PARTS WITHIN THIS DRAWING ARE FORBIDDEN WITHOUT THE WRITTEN CONSENT OF DIALIGHT.		
SCALE: DRAWING SCALE ALL DIM'S IN: INCHES (MM)	DRAWING NUMBER C-17486	REV A
TOLERANCES: UNLESS OTHERWISE SPECIFIED FRACTIONS: $\pm 1/64$ DECIMALS (.XX): $\pm .01$ DECIMALS (.XXX): $\pm .005$ DECIMALS (.XXXX): $\pm .0005$ ANGLES: $\pm 1^\circ$	TITLE 5MM BI-LEVEL CBI R/G, R/G 3 LEADS (RoHS COMPLIANT)	
FINISH:	MATERIAL	
FSCM 83330	1501 ROUTE 34 SOUTH FARMINGDALE, NJ 07727	
	SHEET 1 OF 1	FAMILY TABLE:

RECOMMENDED HOLE PATTERN GAUGE