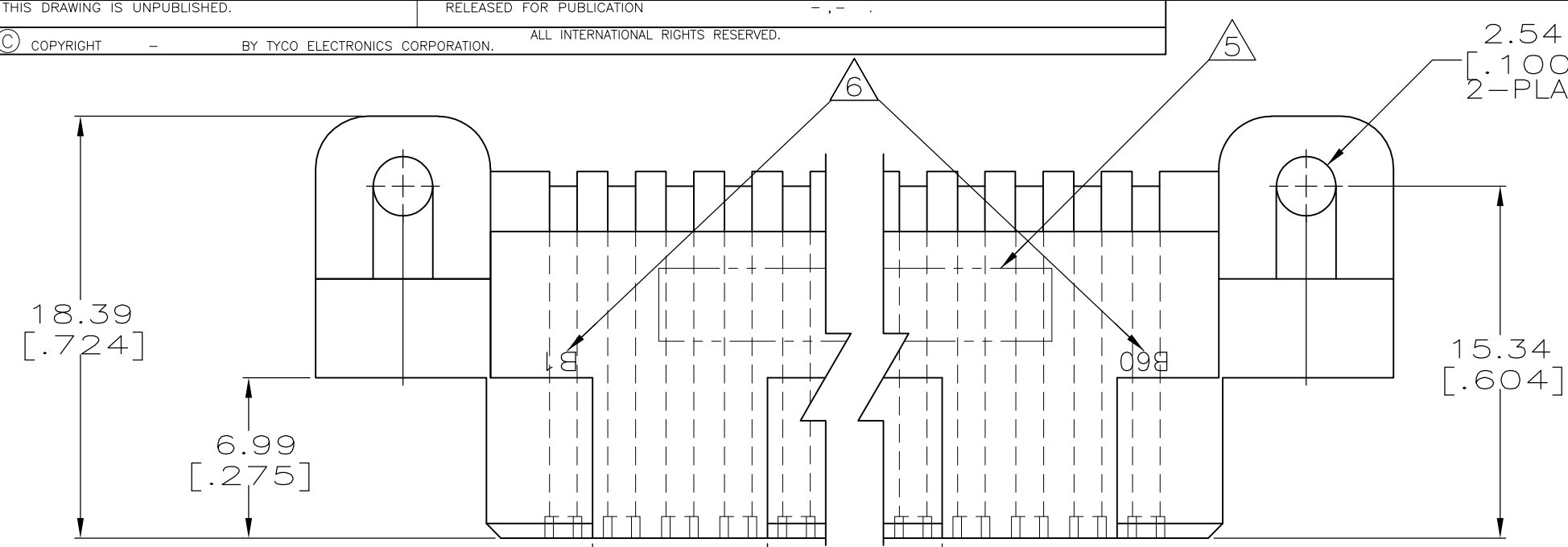
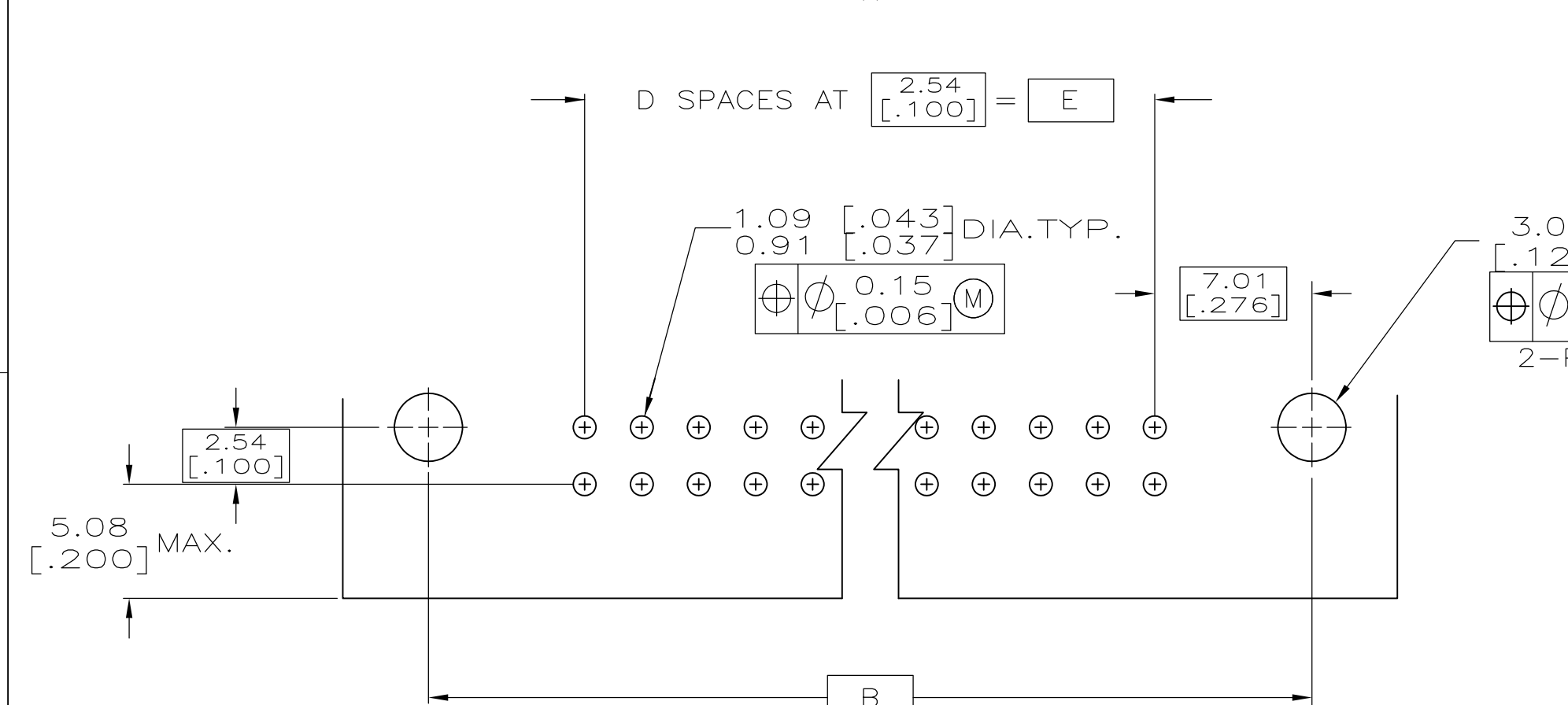
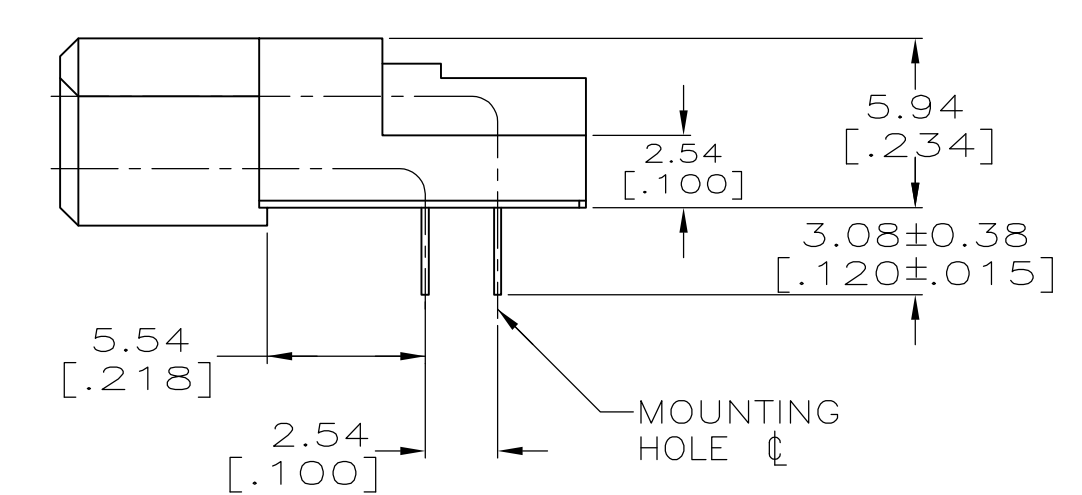
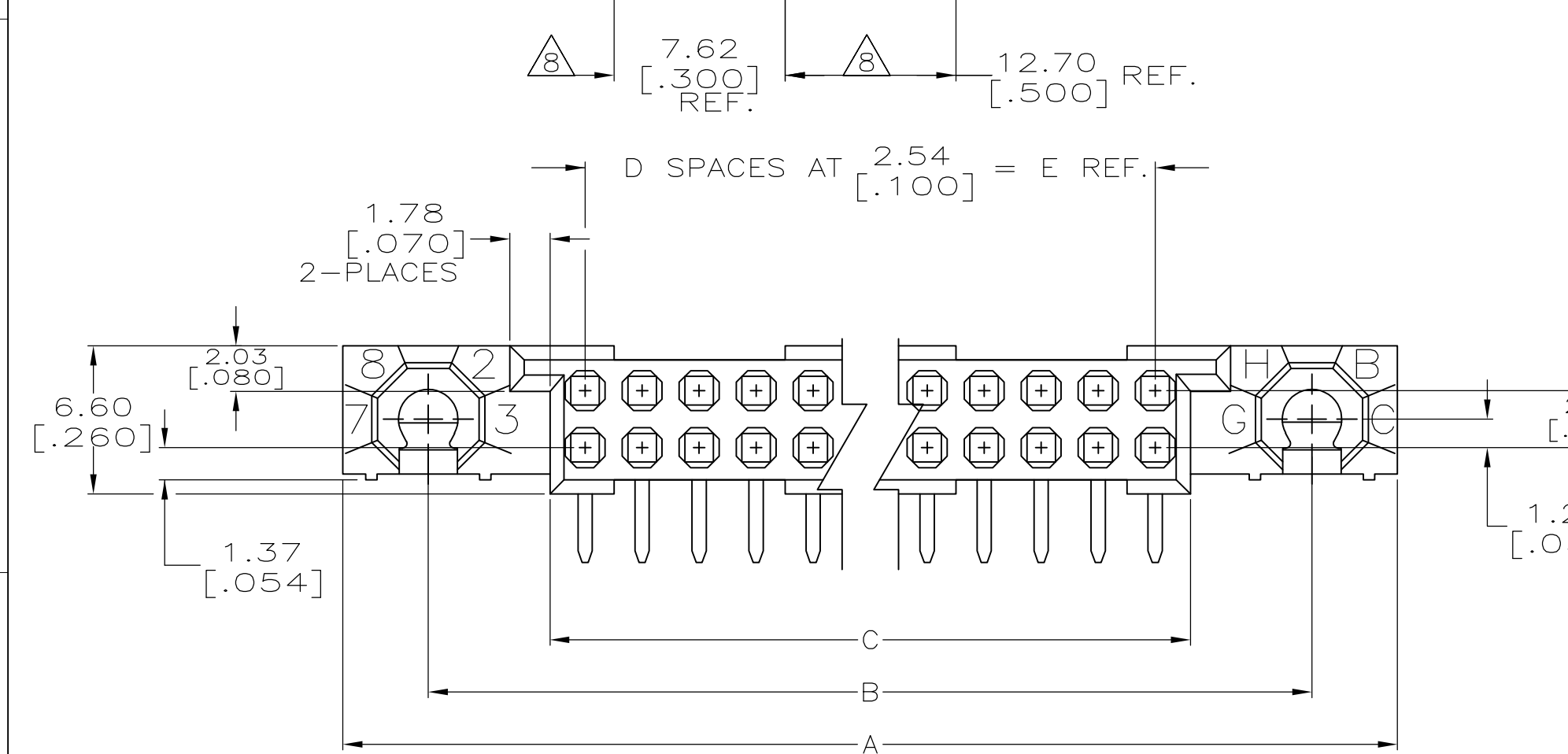


LOC		DIST		REVISIONS			
AD	00	P	LTR	DESCRIPTION	DATE	DWN	APVD
		D2	REV PER	ECO-09-020034	08OCT2009	BC	AS



- 1 HOUSING MATERIAL: POLYPHENYLENE SULFIDE, COLOR NATURAL.
- 2 CONTACT MATERIAL: COPPER ALLOY
- 3 CONTACT FINISH : 0.00127-0.00254 [.000050 -.000100] NICKEL UNDERPLATE ALL OVER, 0.00127 [.000050] GOLD IN CONTACT AREA, TIN-LEAD ON SOLDER LEADS.
- 4 SOLDER LEADS MUST FIT HOLE PATTERN SHOWN IN RECOMMENDED P.C. BOARD LAYOUT.
- 5 MARKED THE FOLLOWING: 19207-12346362, MFR-00779-535394-1 AND DATE CODE, IN APPROXIMATE AREA SHOWN, (WHITE).
- 6 ROW "B", FIRST AND LAST CONTACT IDENTIFICATION NUMBER, AND HASH MARK EVERY TENTH CAVITY INK STAMPED, (WHITE).
- 7 CONNECTORS HAVE GROUP "A" AND "B" INSPECTION AND CERTIFICATE OF COMPLIANCE CODE "A".
- 8 QUANTITIES OF VOID CORING ARE DEPENDENT ON THE POSITION SIZE OF THE HOUSING.



RECOMMENDED PC BOARD LAYOUT 4

149.86 [5.900]	59	153.01 [6.024]	163.83 [6.450]	171.45 [6.750]	120	535394-1
E	D	C	B	A	POSN	PART NUMBER

THIS DRAWING IS A CONTROLLED DOCUMENT.

DWN D.HOFFMAN 11/29/89	Tyco Electronics Corporation Harrisburg, PA 17105-3608
CHK G.E.SKIPPER 3/29/94	
APVD G.F.SKIPPER 3/29/94	
NAME G.F.SKIPPER	
DIMENSIONS: mm [INCHES]	TOLERANCES UNLESS OTHERWISE SPECIFIED:
0 PLC ± -	1 PLC ± -
2 PLC ± -	3 PLC ± .005
4 PLC ± ± -	ANGLES ± ± -
MATERIAL	FINISH
1 2	3
CUSTOMER DRAWING	

SIZE A2	CAGE CODE 00779	DRAWING NO G-535394	RESTRICTED TO -
SCALE 4:1	SHEET 1 of 1	REV D2	