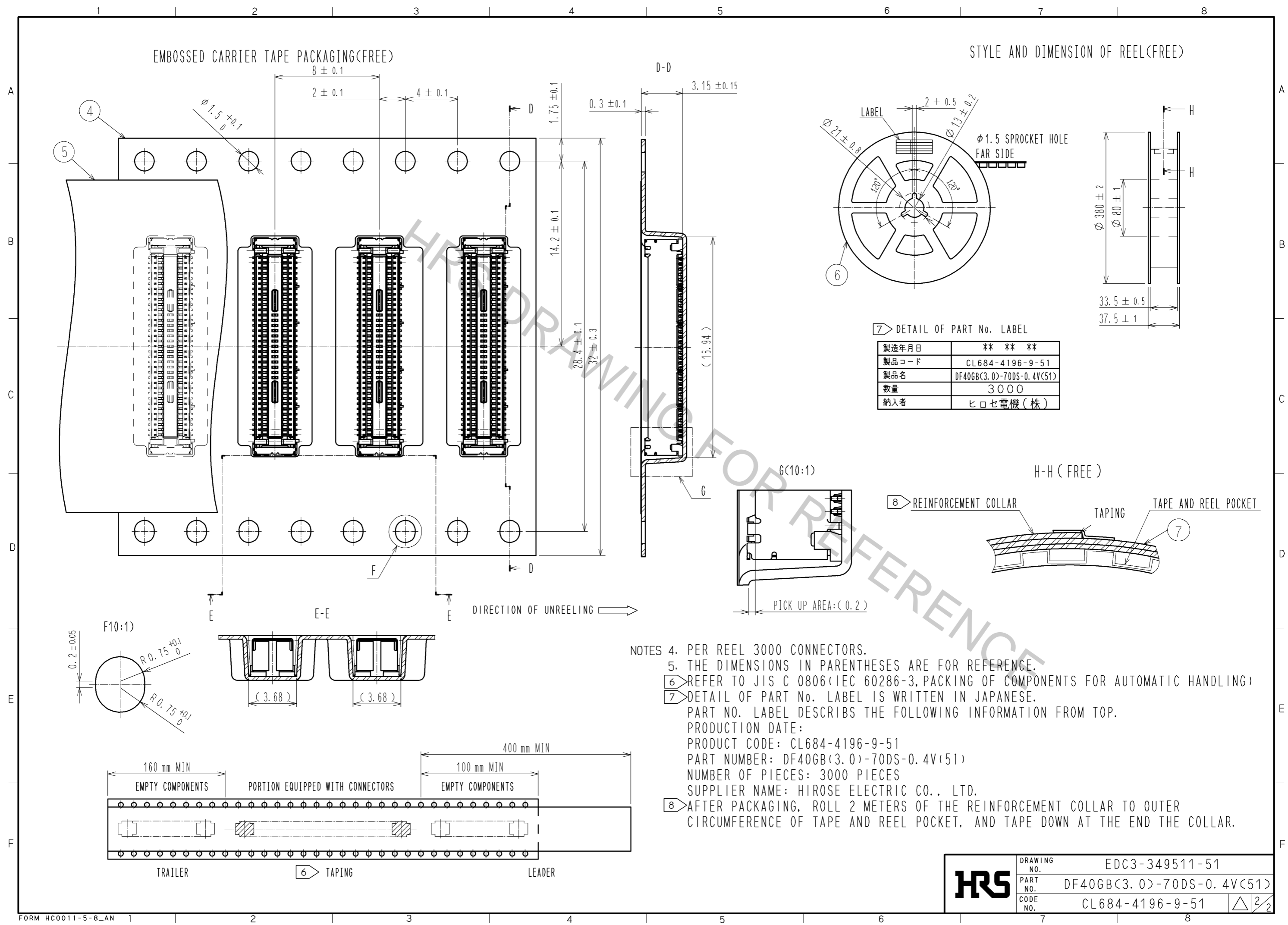


NOTES) 1. ALL LEADS METAL FITTINGS CO-PLANARITY SHALL BE 0.1mm MAX.
 2. IS NON-CONDUCTIVE AREA.
 3. RECOMMENDED WAY FOR USE IS CONTACT PIN : 40PIN. GROUND PIN : 80PIN.

2	PHOSPHOR BRONZE	CONTACT AREA:GOLD 0.05 μ m MIN SMT LEAD:GOLD 0.05 μ m MIN UNDERPLATING:NICKEL 1 μ m MIN	7	PS	CLEAR(REINFORCEMENT COLLAR)		
1	LCP	BLACK, UL94V-0	6	PS	BLACK(PLASTIC REEL)		
			5	POLYESTER	CLEAR(COVER TAPE)		
			4	PS	CLEAR(EMBOSSED CARRIER TAPE)		
			3	PHOSPHOR BRONZE	SURFACE:GOLD 0.05 μ m MIN SMT LEAD:GOLD 0.05 μ m MIN UNDERPLATING:NICKEL 1 μ m MIN		
NO.	MATERIAL	FINISH . REMARKS	NO.	MATERIAL	FINISH . REMARKS		
UNITS		SCALE	COUNT	DESCRIPTION OF REVISIONS	DESIGNED	CHECKED	DATE
mm		10 : 1	Δ				
HRS HIROSE ELECTRIC CO., LTD.		APPROVED : KH. IKEDA	12.12.06	DRAWING NO. EDC3-349511-51			
		CHECED : YH. MICHIDA	12.12.06	PART NO. DF40GB(3.0)-70DS-0.4V(51)			
		DESIGNED : TY. YAMASAKI	12.12.06	CODE NO. CL684-4196-9-51			
		DRAWN : NT. SEKI	12.12.06				

Apr.1.2017 Copyright 2017 HIROSE ELECTRIC CO., LTD. All Rights Reserved.



7) DETAIL OF PART No. LABEL

製造年月日	** ** *
製品コード	CL684-4196-9-51
製品名	DF40GB(3.0)-70DS-0.4V(51)
数量	3000
納入者	ヒロセ電機(株)

- NOTES
- PER REEL 3000 CONNECTORS.
 - THE DIMENSIONS IN PARENTHESES ARE FOR REFERENCE.
 - REFER TO JIS C 0806 (IEC 60286-3, PACKING OF COMPONENTS FOR AUTOMATIC HANDLING)
 - DETAIL OF PART No. LABEL IS WRITTEN IN JAPANESE. PART NO. LABEL DESCRIBES THE FOLLOWING INFORMATION FROM TOP.
 PRODUCTION DATE:
 PRODUCT CODE: CL684-4196-9-51
 PART NUMBER: DF40GB(3.0)-70DS-0.4V(51)
 NUMBER OF PIECES: 3000 PIECES
 SUPPLIER NAME: HIROSE ELECTRIC CO., LTD.
 - AFTER PACKAGING, ROLL 2 METERS OF THE REINFORCEMENT COLLAR TO OUTER CIRCUMFERENCE OF TAPE AND REEL POCKET, AND TAPE DOWN AT THE END THE COLLAR.

HRS	DRAWING NO.	EDC3-349511-51
	PART NO.	DF40GB(3.0)-70DS-0.4V(51)
	CODE NO.	CL684-4196-9-51
		△ 2/2