

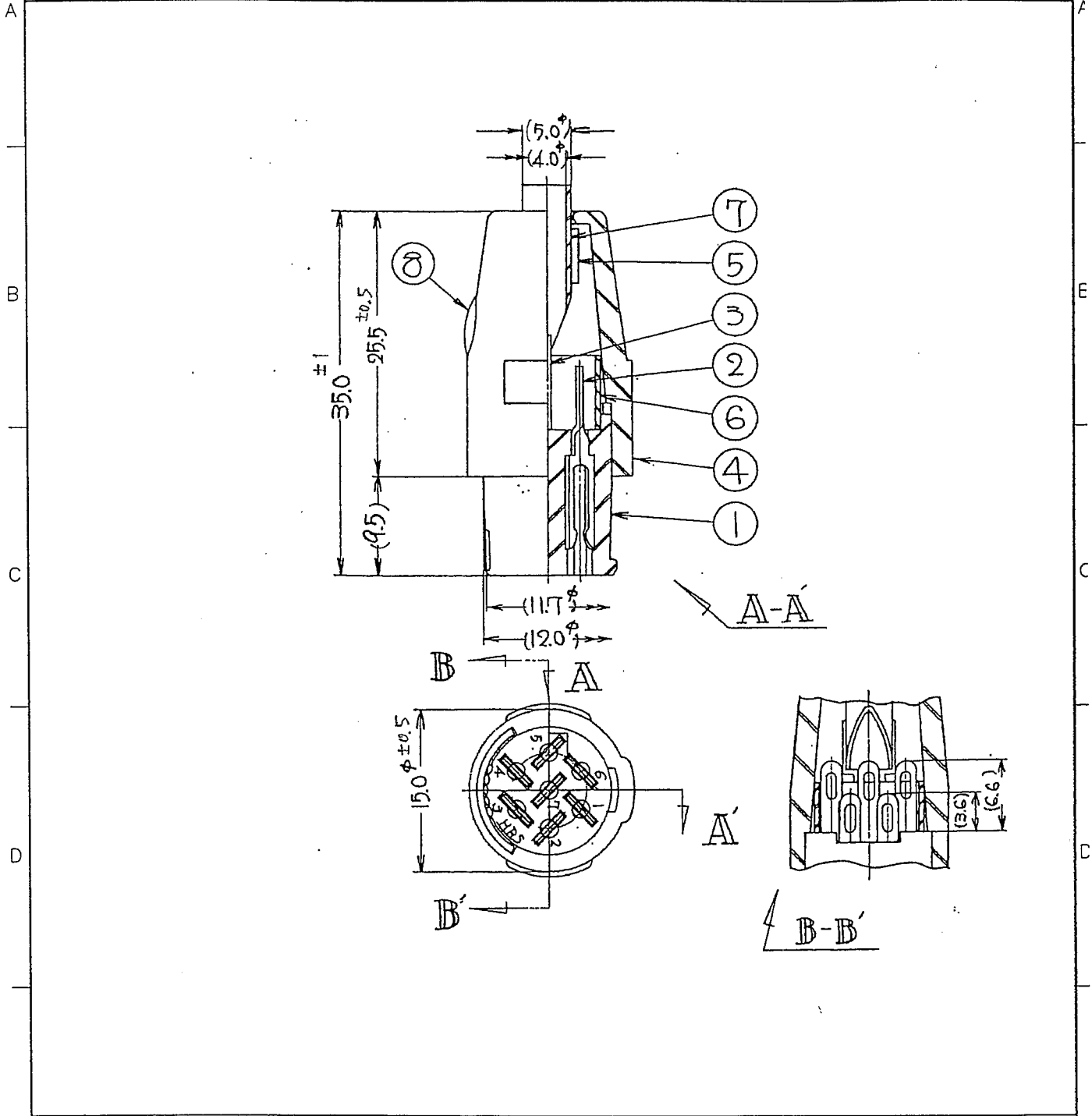
RoHS2(10 substances conformity)
 DRAWING FOR REFERENCE: This is subject to change without notice
 in cases where the application will demand a high level of reliability, such as automotive, please contact a company representative for further information.

TO
□
□
□

COUNT	DESCRIPTION OF REVISIONS	BY	CHKD	DATE	COUNT	DESCRIPTION OF REVISIONS	BY	CHKD	DATE
△					△				
△					△				
APPLICABLE STANDARD									
RATING	OPERATING TEMPERATURE RANGE	-10 °C TO +70 °C			STORAGE TEMPERATURE RANGE	-10 °C TO +60 °C			
	VOLTAGE	AC 150 V , DC 200 V							
	CURRENT	5 A			APPLICABLE CABLE	φ4±0.2			
SPECIFICATIONS									
ITEM		TEST METHOD			REQUIREMENTS			QT	AT
CONSTRUCTION									
GENERAL EXAMINATION		VISUALLY AND BY MEASURING INSTRUMENT.			ACCORDING TO DRAWING.			×	×
MARKING		CONFIRMED VISUALLY.						×	×
ELECTRIC CHARACTERISTICS									
CONTACT RESISTANCE		CONTACT SHALL BE MEASURED AT DC 1 A			5 mΩ MAX.			×	×
		CONTACT SHALL BE MEASURED AT DC - A			- mΩ MAX.			—	—
INSULATION RESISTANCE		500 V DC.			1000 MΩ MIN.			×	×
VOLTAGE PROOF		500 V AC FOR 1 min.			NO FLASHOVER OR BREAKDOWN.			×	×
MECHANICAL CHARACTERISTICS									
CONTACT INSERTION AND WITHDRAWAL FORCES		φ1.47 ^{+0.003} ₀ BY STEEL GAUGE.			INSERTION AND WITHDRAWAL FORCES : 0.2 N MIN			×	—
		φ1.53 ⁰ _{-0.003} BY STEEL GAUGE			INSERTION AND WITHDRAWAL FORCES : 4 N MAX				
CONNECTOR INSERTION AND WITHDRAWAL FORCES		MEASURED BY APPLICABLE CONNECTOR.			INSERTION AND WITHDRAWAL FORCES : LOCKING DEVICE WITH UNLOCK : - N MAX LOCKING DEVICE WITH LOCK : 10 ~40 N.			×	—
MECHANICAL OPERATION		500 TIMES INSERTIONS AND EXTRACTIONS.			① CONTACT RESISTANCE: 10 mΩ MAX.			×	—
VIBRATION		FREQUENCY 10 TO 55 Hz, SINGLE AMPLITUDE 0.75 mm. — m/s ² AT 2 h, FOR 3 DIRECTIONS.			① NO ELECTRICAL DISCONTINUITY OF 10 μs. ② NO DAMAGE, CRACK AND LOOSENESS OF PARTS.			×	—
SHOCK		490 M/s ² DIRECTIONS OF PULSE 11 ms AT 3 TIMES FOR 3 DIRECTION			① NO ELECTRICAL DISCONTINUITY OF 10 μs. ② NO DAMAGE, CRACK AND LOOSENESS OF PARTS.			×	—
ENVIRONMENTAL CHARACTERISTICS									
DAMP HEAT (STEADY STATE)		EXPOSED AT 40 °C, 90 TO 95 %, 96 h.			① INSULATION RESISTANCE: 10 MΩ MIN (AT HIGH HUMIDITY). ② INSULATION RESISTANCE: 100 MΩ MIN (AT DRY). ③ NO DAMAGE, CRACK AND LOOSENESS OF PARTS.			×	—
RAPID CHANGE OF TEMPERATURE		TEMPERATURE -55 → R/T → +65 → R/T °C TIME 30 → 10 TO 15 → 30 → 10 TO 15 min UNDER 5 CYCLES. (R/T: ROOM TEMPERATURE)			① INSULATION RESISTANCE: 100 MΩ MAX. ② NO DAMAGE, CRACK AND LOOSENESS OF PARTS.			×	—
CORROSION SALT MIST		EXPOSED IN 5 % SALT WATER SPRAY FOR 48 h.			NO HEAVY CORROSION.			×	—
DRY HEAT		EXPOSED AT + 65 °C , 96 h.			NO DAMAGE, CRACK AND LOOSENESS OF PARTS.			×	—
COLD		EXPOSED AT - 55 °C , 96 h.			NO DAMAGE, CRACK AND LOOSENESS OF PARTS.			×	—
RESISTANCE TO SOLDERING HEAT (FLOW SOLDERING)		SOLDER TEMPERATURE, +350±10°C, FOR IMMERSION, DURATION, 5s.			NO DEFORMATION OF CASE OF EXCESSIVE LOOSENESS OF THE TERMINALS.			×	—
SOLDERABILITY		SOLDER TEMPERATURE, +350±10°C, FOR IMMERSION, DURATION, 3 s.			WETTING ON SOLDER SURFACE. NO SOLDER CLUSTER.			×	—
REMARKS					DRAWN	DESIGNED	CHECKED	APPROVED	RELEASED
					M. Ishimura	H. Zemba	M. Sato		
Unless otherwise specified, refer to JIS C 5042.					05.09.27		05.09.27		
Note QT:Qualification Test AT:Assurance Test O:Applicable Test									
HRS HIROSE ELECTRIC CO., LTD.				SPECIFICATION SHEET			PART NO. RPC2-12P-7S(71)		
CODE NO. (OLD) CL		DRAWING NO. ELC4-006786-71			CODE NO. CL113-0015-2-71			1	1

RoHS2(10 substances conformity)
 DRAWING FOR REFERENCE: This is subject to change without notice
 In cases where the application will demand a high level of reliability, such as automotive, please contact a company representative for further information.

1			2			3			4					
COUNT	DESCRIPTION OF REVISIONS	BY	CHKD	DATE	COUNT	DESCRIPTION OF REVISIONS	BY	CHKD	DATE	COUNT	DESCRIPTION OF REVISIONS	BY	CHKD	DATE
△					△					△				
△					△					△				
△					△					△				



4	POLYAMIDE	(BLUE)	8	BRASS	NICKEL PLATING
3	PHOSPHOR BRONZE	SILVER PLATING 4μm min.	7	POLYVINYLCHLORIDE	TRANSPARENCY
2	PHOSPHOR BRONZE	SILVER PLATING 4μm min.	6	POLYVINYLCHLORIDE	TRANSPARENCY
1	POLYAMIDE	(BLUE)	5	BRASS	NICKEL PLATING
NO.	MATERIAL	FINISH, REMARKS	NO.	MATERIAL	FINISH, REMARKS

CODE NO. (OLD)	DRAWN	DESIGNED	CHECKED	APPROVED	RELEASED
	E. Yamino	E. Yamino	H. Zemba	M. Sato	
	05.09.26	05.09.26	05.09.27	05.09.28	

SCALE	DRAWING NO.	PART NO.
2 : 1	EDC4-006786-71	RPC2-12P-7S (71)
UNITS	CODE NO.	
mm	CL113-0015-2-71	1/1

