

MATERIALS AND FINISHES

BODY OUTER: BRASS  
PLATED SEE TABLE

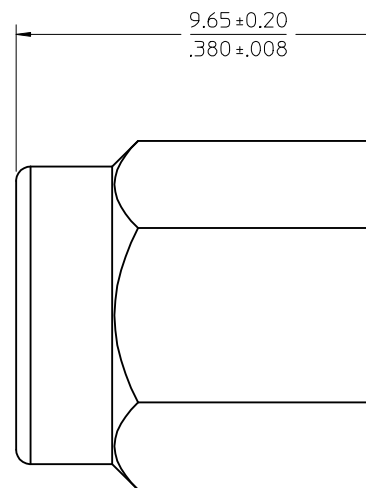
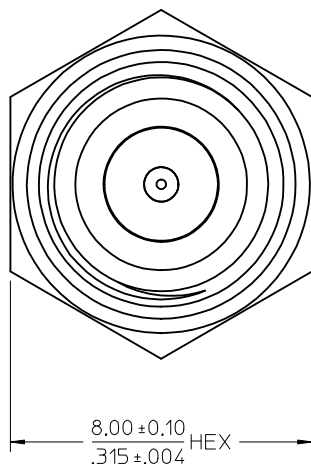
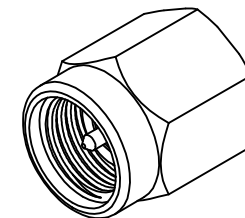
BODY INNER: BRASS  
PLATED SEE TABLE

CONTACT: BRASS  
PLATED SEE TABLE

INSULATOR: TEFLON

RESISTOR: 2 100 OHM ±1% CHIP RESISTORS

ELECTRIAL PERFORMANCE:  
VSWR ≤ 1.20 THRU 6 GHZ  
VSWR ≤ 1.30 THRU 12 GHZ  
VSWR ≤ 1.35 THRU 18 GHZ



MIL-STD-348A, FIG. 310.1	INTERFACE
SPECIFICATION	DESCRIPTION

73391-0682	GOLD (10μ IN MIN)	GOLD (10μ IN MIN)	GOLD (30μ IN MIN)	-----
73391-0681	GOLD (FLASH)	GOLD (10μ IN MIN)	GOLD (10μ IN MIN)	73251-3490
73391-0680	NICKEL (100 μ IN)	GOLD (FLASH)	GOLD (10μ IN MIN)	73251-3491
PART NO.	OUTER BODY	BODY INNER	CONTACT	SAME AS
	FINISH	FINISH	FINISH	

<b>CHG:</b> <b>ADD TOLERANCES</b> EC NO: URF2013-0242 DRWN: JWIENER 2012/10/23 CHKD: SSS 2012/10/23 APPR: JWIENER 2012/10/25 REV: <b>E3</b>	QUALITY SYMBOLS ▽=0 ▽=0	GENERAL TOLERANCES (UNLESS SPECIFIED) mm INCH 4 PLACES ± --- ± --- 3 PLACES ± --- ± --- 2 PLACES ± --- ± --- 1 PLACE ± --- ± --- ANGULAR ± 2 °	DIMENSION STYLE MM/IN DRAWN BY DATE CLLI 2004/02/17 CHECKED BY DATE K.C. 2004/02/17 APPROVED BY DATE MISEN 2004/02/17	SCALE DESIGN UNITS METRIC THIRD ANGLE PROJECTION	TITLE SMA PLUG TERMINATION SMA-P, EWR-3728 MOLEX INCORPORATED DOCUMENT NO. SD-73391-068 SHEET NO. 1 OF 1
	DRAFT WHERE APPLICABLE MUST REMAIN WITHIN DIMENSIONS		MATERIAL NO. SEE TABLE	THIS DRAWING CONTAINS INFORMATION THAT IS PROPRIETARY TO MOLEX INCORPORATED AND SHOULD NOT BE USED WITHOUT WRITTEN PERMISSION	