

ATLANTIC VERSION TERMINATOR INTERFACE ADAPTER	PART NUMBER	REVISION	DESCRIPTION	FEED TYPE	CONVERT TO	PART NUMBERS REQUIRED					
	2151285-2	B	FINE CRIMP HEIGHT ADJUST	PNEUMATIC	-	-	-	-	-	-	-
	2151285-5	B	FINE CRIMP HEIGHT ADJUST	SERVO LATCH PLATE	SERVO LATCH PLATE	2119951-1	-	8-2151285-5	1901094-3	-	2168400-6 (QUANTITY 2)
	2151285-6	B	NON-CRIMP HEIGHT ADJUST	SERVO LATCH PLATE	PNEUMATIC FEED	2161326-1	-	8-2151285-4	-	-	-
	2151285-7	B	FINE CRIMP HEIGHT ADJUST	NONE	-	-	-	-	-	-	-
	7-2151285-7	A	CRIMP TOOLING KIT	-	-	-	-	-	-	-	-

APPLICATOR DATA		
CRIMP	SIZE	TYPE
WIRE	5.08 mm [.200]	F
INSUL	7.62 mm [.300]	F

APPLICATOR INSTRUCTIONS
408-10389

TERMINAL DATA: TE TERMINAL		TE CRIMP SPECIFICATION	
TERMINAL NAME: MAXI-POWER-TIMER CONTACT GAP 0.8			
WIRE STRIP LENGTH		INSULATION DIAMETER RANGE	
8.40-9.20 mm [.331-.362 IN]		Ø4.60-6.60 mm [1.81-.260 IN]	
TERMINAL APPLICATION SPECIFICATION	114-18075		
TERMINALS APPLIED			
TE TERMINAL	TE TERMINAL	TE TERMINAL	TE TERMINAL
962932-1	1-962932-6	2-962932-1	9-962932-1
965918-1	2-965918-1	1-1703008-6	

WIRE SIZE	CRIMP HEIGHT mm [INCH]	CRIMP HEIGHT REFERENCE SETTING
10.00mm ²	3.82 +/- 0.05 [1.150 +/- .002]	5.5
6.00mm ²	3.20 +/- 0.05 [1.126 +/- .002]	12.2

- 1 RECOMMENDED SPARE PARTS
- 2 GREASE BEARING SURFACES LIGHTLY
- 3 LUBRICATE DAILY PER THE APPLICATOR INSTRUCTION SHEET SUPPLIED WITH THE APPLICATOR.
- 4 APPLICATOR SPECIFIC DATA TO BE ENTERED INTO BLANK MEMORY CHIP AT ASSEMBLY. SEE BELOW FOR PART NUMBER:
 PNEUMATIC FEED WITH "SMART APPLICATOR" CONVERSION: 8-2151285-4
 SERVO FEED WITH "FINE CRIMP HEIGHT ADJUST": 8-2151285-5
 SERVO FEED WITH "NON-CRIMP HEIGHT ADJUST": 8-2151285-6
- 5 ADJUSTMENT OF THE STRIPPER MAY BE REQUIRED WHEN MOVING THE APPLICATOR BETWEEN BENCH AND LEADMAKER APPLICATIONS.
- 6 APPLY PART NUMBER 1-23419-5 LOCTITE TO THREADS OF ITEM 50 & 62. APPLY PART NUMBER 2-23419-6 LOCTITE TO THREADS OF ITEM 242. FOR -6 ONLY APPLY PART NUMBER 1-23419-5 LOCTITE TO THREADS OF ITEM 37.
- 7 GREASE THREADS, GROOVE AND O-RING ON ITEMS 35 & 252.
- 8 MAGNET, ITEM 166 MUST BE ORIENTED CORRECTLY IN ORDER TO PROPERLY ACTUATE THE COUNTER.
- 9 CRIMP HEIGHT REFERENCE SETTING WAS THE SETTING USED WHEN THE APPLICATOR WAS QUALIFIED AT THE FACTORY. ADJUSTMENT MAY BE NECESSARY WHEN RUNNING APPLICATOR IN THE FIELD.
- 10 TERMINAL PITCH NOT COMPATIBLE WITH MECHANICAL FEED.
- 11 TO CONVERT THE APPLICATOR TO A NON-CARRIER CUTTING STYLE, REMOVE ITEM 13 AND ATTACH TO THE LOCATION ON THE BACK SIDE OF THE HOUSING. REFER TO INSTRUCTION SHEET FOR ADDITIONAL INFORMATION.
- 12 WHEN ASSEMBLING -6 NON-CRIMP HEIGHT ADJUST APPLICATOR USE SHIM PACK 2119957-2 TO ALIGN APPLICATOR'S MAXIMUM WIRE CRIMP HEIGHT AT NORMAL TERMINATOR SHUT HEIGHT
- 13 USE ITEM #6 WHEN RUNNING 10mm² WIRE. USE ITEM #5 WHEN RUNNING 6mm² WIRE.

***WARNING**
ON INSTALLATION, SET WIRE DISC, ITEM 40 TO LARGEST WIRE SIZE SETTING. USE OF SETTINGS BELOW MINIMUM REQUIRED CRIMP HEIGHT SETTING WILL CAUSE DAMAGE TO CRIMP TOOLING.

ITEM NO	DESCRIPTION	ITEM NO
12	APPLICATOR SHIM PACK	260
7	O-RING, .676 ID, .070 DIA. MAT.	252
	PUSH ROD, AIR FEED	250
	BUSHING, LCHS-12, MISUMI	249
	FEED CAM, AIR FEED	248
	DETENT PIN	247
	SPRING, COMPRESSION	246
	RAM, STEPPED, ATLANTIC, SF, NON-ADJ	245
-77	PART NO	DESCRIPTION
-7	-6	-5
-2		

ATLANTIC VERSION
Shown on sheets 1 of 4 & 2 of 4
(Pacific version shown on sheets 3 of 4 & 4 of 4)

SET UP GAUGE	LOC	DIST	REVISIONS					
2119599-1	A	66	P	LTN	DESCRIPTION	DATE	OWN	APVD
			B		ECR-16-002021	10FEB2016	MR	TE

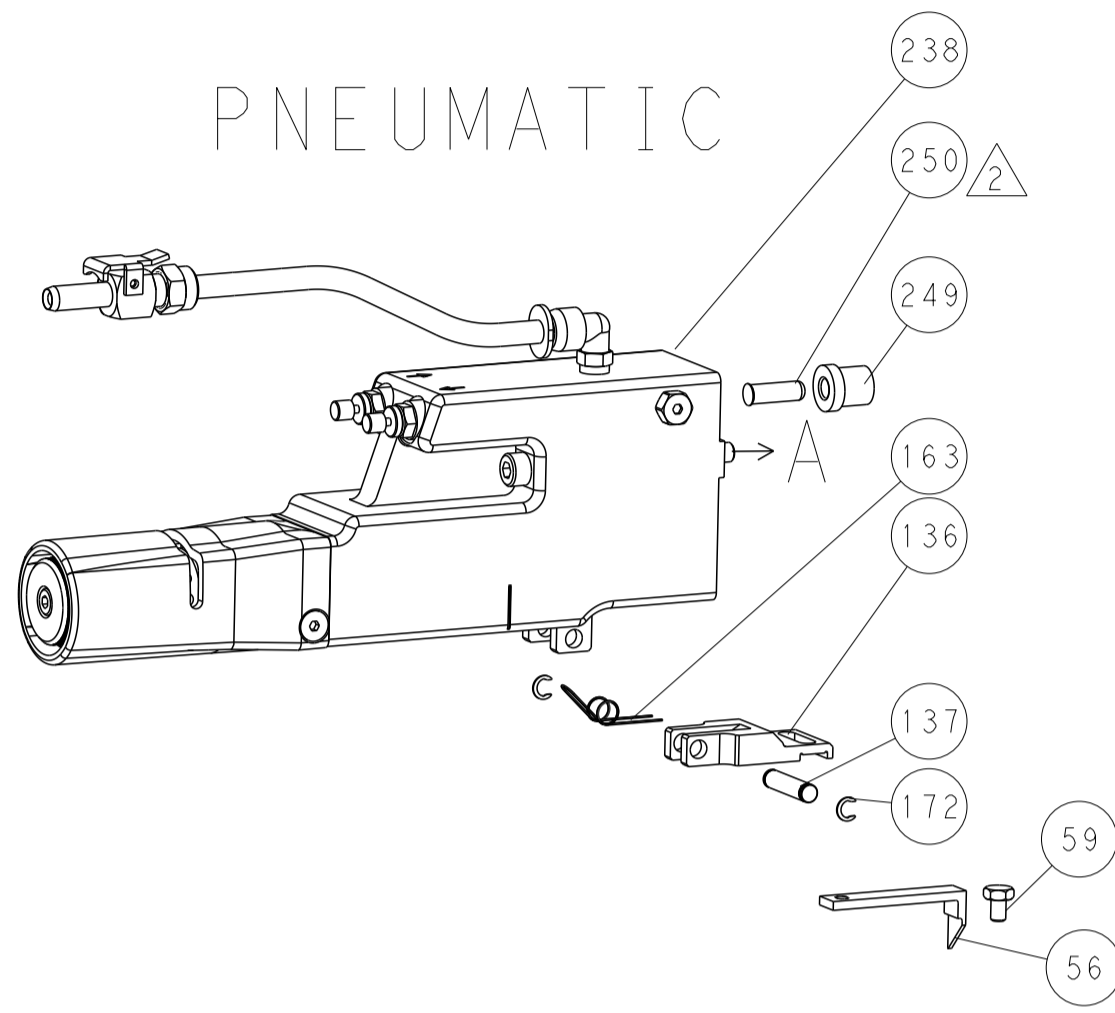
1	1	1	1	2119082-9	CAM, SNAIL, INSULATION ADJUSTMENT	244
1	1	1	1	2079764-1	WASHER, WAVE SPRING, CREST-TO-CREST	243
1	1	1	1	2119083-1	RETAINER, INSULATION DIAL	242
1	1	1	1	7-18023-7	SCR, SKT HD CAP M3 X 4.0	241
2	2	2	2	2168400-6	SHCS, LOW HEAD, RoHS, M5 X 16	240
2063440-2					AIR FEED MODULE	238
2119740-2					TAG, IDENTIFICATION	213
1901094-3					SPACER, FEEDER	198
993111-8					PIN, SLOTTED SPRING 3.0 X 12.0	177
8-22280-7					SPRING, COMPRESSION	176
1752353-2					GUIDE PIN, HOLDDOWN	175
1901680-2					GUIDE PIN, HOLDDOWN	174
21045-3					RING, RETAIN, EXTERN, 3/16 CRESCENT	172
994969-1					MAGNET, RARE EARTH HIGH ENERGY	166
994970-2					COUNTER, MAGNETIC	164
240638-1					SPRING, FEED FINGER	163
3-23627-7					PIN, RETAIN, GRVD, 3/16 X .854	137
2119799-1					HOLDER, FEED FINGER, AF	136
SEE NOTE 4					MEMORY CHIP, PROGRAMMED	135
1633743-1					SERVO FEED LATCH ASM	133
318563-1					GUARD, FRONT CHIP	119
2119955-1					ASSY, LUBRICATOR, SIDE FEED	113
1-455888-4					SPACER, CRIMPER	83
2-455888-2					SPACER, CRIMPER	82
2079383-4					SCR, BHSC, RoHS (M4 X 8)	79
1633470-2					EXTENSION PLATE	78
2119956-1					DOCUMENTATION PACKAGE	71
2119791-9					DEPRESSOR, WIRE	70
2119740-1					TAG, IDENTIFICATION	67
2168078-1					SCREW, DRIVE, RH, RoHS, 2 x .188	66
2119793-1					LIMITER, ADJUSTMENT BOLT	63
992763-5					SCR, SET, SOC, CONE POINT, M3 X 4.0	62
2079383-4					SCR, BHSC, RoHS (M4 X 8)	60
5-18022-5					SCR, HEX HD CAP, M4 X 6.0	59
1338683-8					FEED PAWL	56
2168400-1					SHCS, LOW HEAD, RoHS, M4 X 12	54
1-5018030-0					NUT, HEX, REG, RoHS, M3.5	52
2031311-1					HOLDDOWN, TERMINAL	51
2-1752354-3					STANDOFF, HOLD-DOWN	50
18023-9					SCR, SKT HD CAP M4 X 6.0	49
2119656-9					APPLICATOR BASIC ASSEMBLY, SF	46
2161311-1					RAM, STEPPED, AMP STYLE, SIDE FEED	44
1-2079383-5					SCR, BHSC, RoHS (M8 X 40)	41
2119645-1					DISC, NUMBERED FA WIRE ADJUSTMENT	40
2119957-1					APPLICATOR SHIM PACK	39
2119644-1					RAM WASHER, PRECISION	38
2119085-1					FA HEAD, ATLANTIC STYLE	37
2119092-1					BOLT, ADJUSTMENT	35
1-1752356-0					SUPPORT, TERMINAL	34
2079383-5					SCR, BHSC, RoHS (M4 X 20)	33
2161328-1					HEX HEAD, FLANGED, M5 X 8mm LONG	32
1320908-3					SPACER, STRIP GUIDE	30
2119959-2					ASSEMBLY, STRIP GUIDE	29
1-455888-0					SPACER, CRIMPER	28
1320928-4					STRIP GUIDE	24
2168083-2					SCR, SKT HD CAP, RoHS, M4 X 8.0	21
1-18028-2					WASHER, FLAT, REG M4	20
2119533-5					STRIPPER, SIDE FEED	19
2119806-1					INSERT, SHEAR	13
3-22280-3					SPRING, COMPRESSION	12
1-356885-4					STOP, SHEAR	11
2119805-1					SHEAR HOLDER, FRONT	10
454276-5					FLOATING SHEAR, FRONT	9
1976051-4					COMBINATION ANVIL	8
						7
2119757-8					DEPRESSOR, SHEAR	6
2119757-5					DEPRESSOR, SHEAR	5
4-238011-5					BLOCK, CRIMPER SPACER	4
3-1633961-9					CRIMPER, INSULATION F PREMIUM	3
1-455888-8					SPACER, CRIMPER	2
5-1633305-3					CRIMPER, WIRE PREMIUM	1

DIMENSIONS:		TOLERANCES UNLESS OTHERWISE SPECIFIED:		DRAWN		CHK		APVD		NAME	
mm	0 PLC ±	1 PLC ±	2 PLC ±	3 PLC ±	4 PLC ±	5 PLC ±	6 PLC ±	7 PLC ±	8 PLC ±	9 PLC ±	10 PLC ±
	ANGLES										
	FINISH										
MATERIAL		WEIGHT		SIZE	CAGE CODE	DRAWING NO	RESTRICTED TO	Customer Accessible Production Drawing			
				A1	00779	©=2151285		SCALE 1:2 SHEET 1 OF 4 REV B			

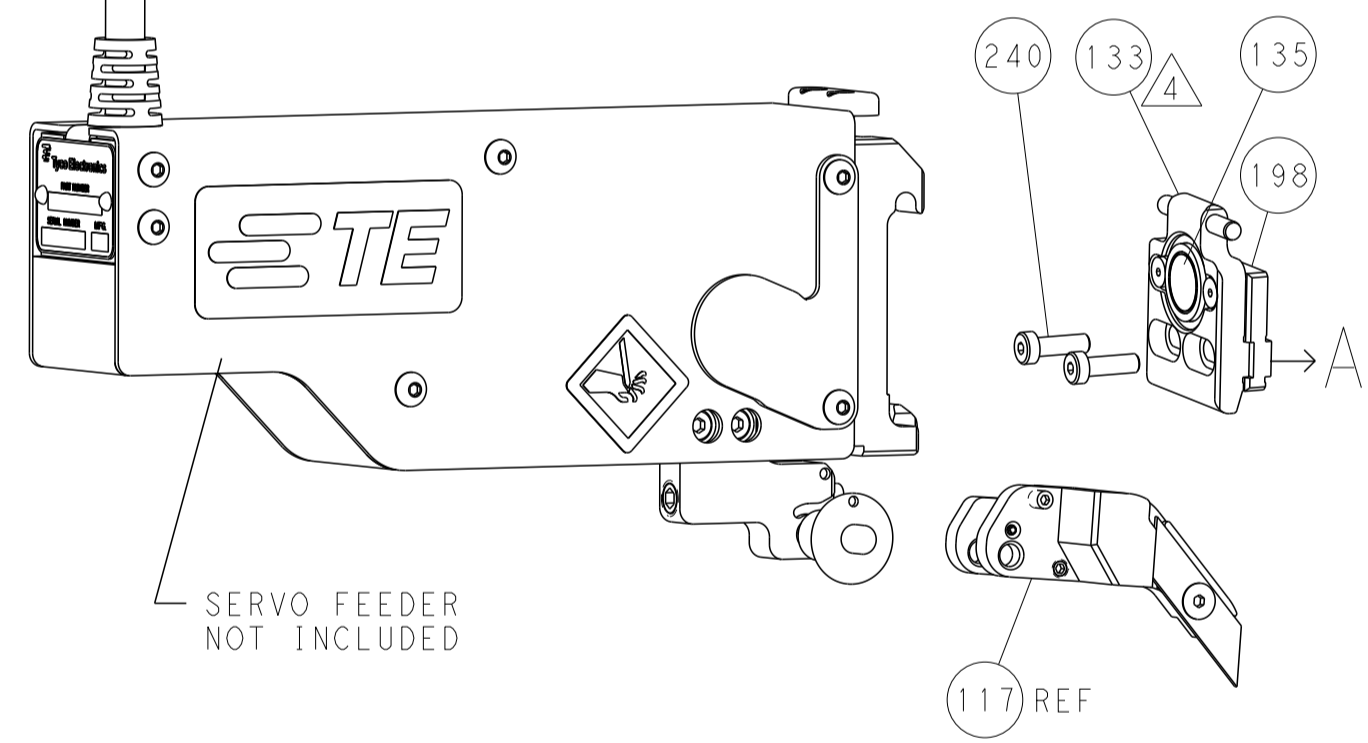
LOC		DIST		REVISIONS			
A	66	P	LTM	DESCRIPTION	DATE	OWN	APVD
		-		SEE SHEET 1			

FEED TYPE

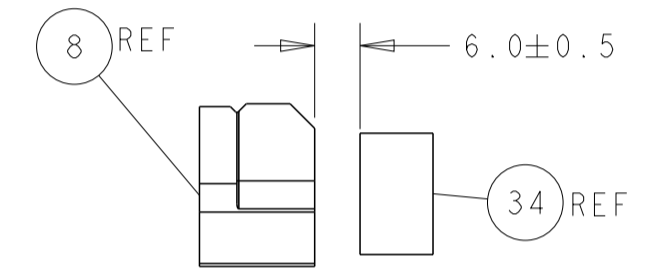
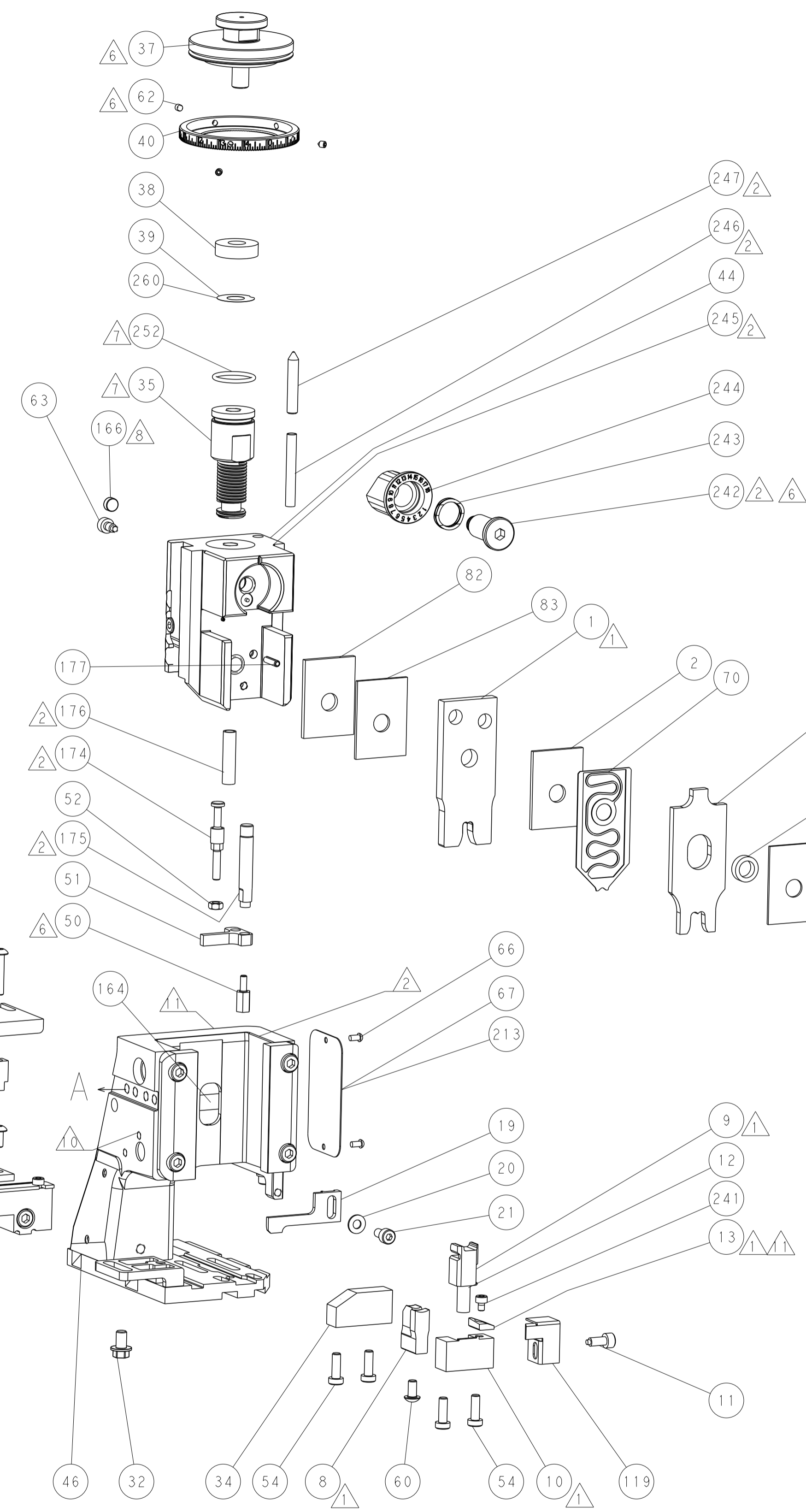
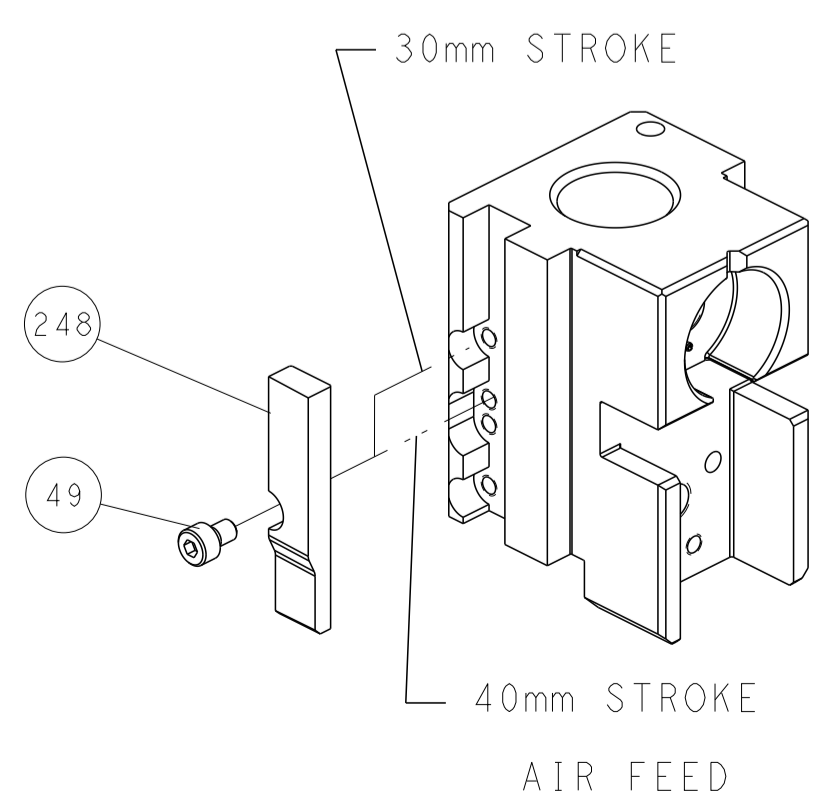
PNEUMATIC



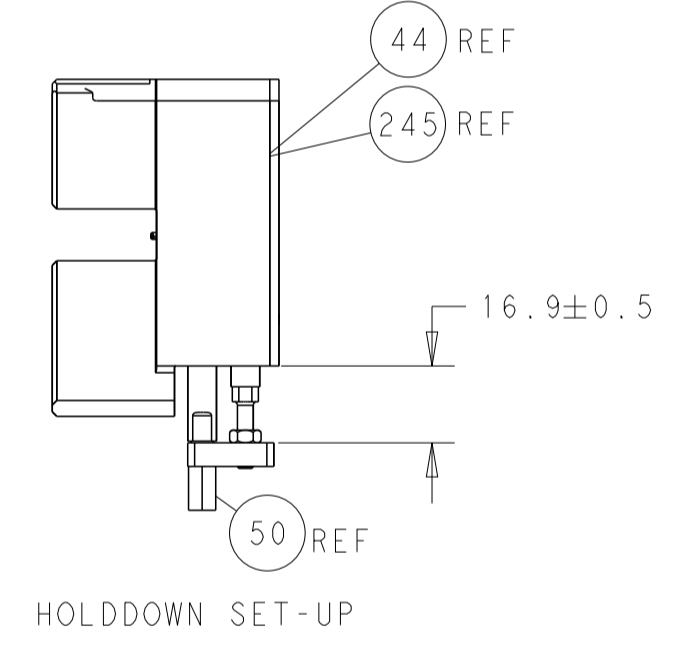
SERVO LATCH PLATE



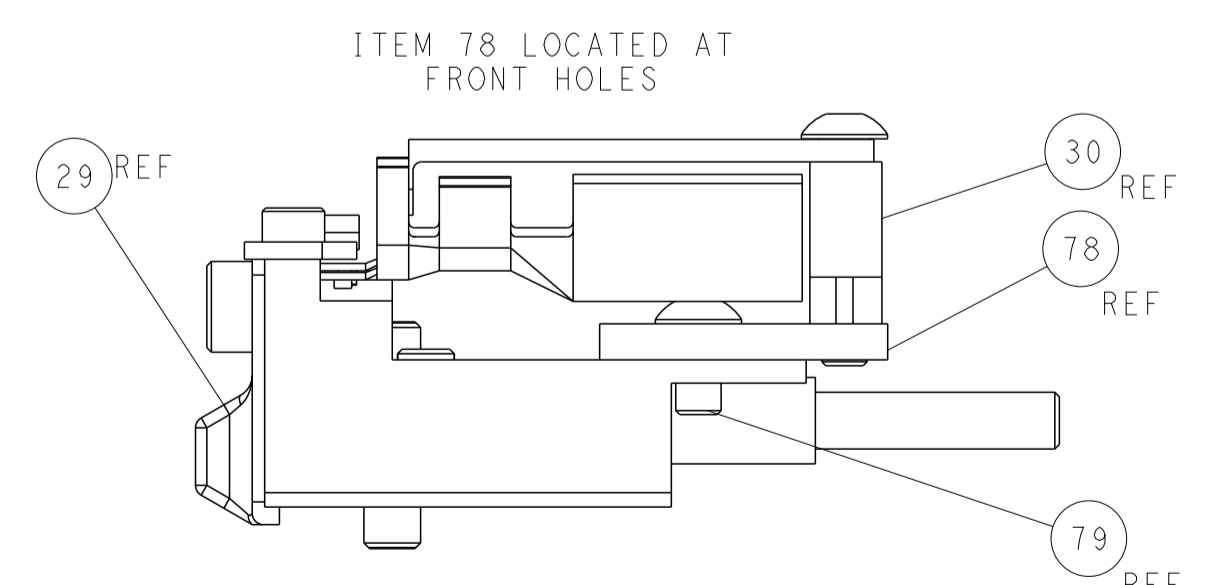
CAM POSITION



TERMINAL SUPPORT LOCATION



HOLDDOWN SET-UP



FEED TRACK POSITION GUIDE BY INSULATION BARREL

ATLANTIC VERSION
 Shown on sheets 1 of 4 & 2 of 4
 (Pacific version shown on sheets 3 of 4 & 4 of 4)

DIMENSIONS:		TOLERANCES UNLESS OTHERWISE SPECIFIED:		DWG Y. YIN 10APR2012		TE Connectivity	
mm	0 PLC ±	1 PLC ±	2 PLC ±	3 PLC ±	4 PLC ±	Harrisburg, PA 17105-3608	
MATERIAL:		FINISH:		CHK G. BAILEY 10APR2012		NAME Ocean Side Feed Applicator	
				APVD S. XI 10APR2012		SIZE CAGE CODE DRAWING NO RESTRICTED TO	
				PRODUCT SPEC		A1 00779 ©=2151285	
				APPLICATION SPEC		Customer Accessible Production Drawing	
				WEIGHT		SCALE 1:2 SHEET 2 OF 4 REV B	

PACIFIC VERSION TERMINATOR INTERFACE ADAPTER	PART NUMBER	REVISION	DESCRIPTION	FEED TYPE	APPLICATOR STYLE CONVERSION CHART						
					CONVERT TO	PART NUMBERS REQUIRED					
	2-2151285-2	B	FINE CRIMP HEIGHT ADJUST	PNEUMATIC	-	-	-	-	-	-	
					SERVO LATCH PLATE SMART APPLICATOR	2119951-1	-	8-2151285-5	1901094-3	2168400-6 (QUANTITY 2)	
	2-2151285-5	B	FINE CRIMP HEIGHT ADJUST	SERVO LATCH PLATE Δ 4	-	-	-	-	-	-	
					PNEUMATIC FEED	2119950-1	1338685-1	5-18022-5	2119641-2	2119799-1	2063440-2
	2-2151285-7	B	FINE CRIMP HEIGHT ADJUST	NONE	-	-	-	-	-	-	
	7-2151285-7	A	CRIMP TOOLING KIT	-	-	-	-	-	-	-	

APPLICATOR DATA		
CRIMP WIRE	SIZE	TYPE
	5.08 mm [.200]	F
INSUL	7.62 mm [.300]	F
APPLICATOR INSTRUCTIONS 408-10389		

TERMINAL DATA: TE TERMINAL		TE CRIMP SPECIFICATION	
TERMINAL NAME: MAXI-POWER-TIMER CONTACT GAP 0.8			
WIRE STRIP LENGTH		INSULATION DIAMETER RANGE	
8.40-9.20 mm [.331-.362 IN]		\varnothing 4.60-6.60 mm [.181-.260 IN]	
TERMINAL APPLICATION SPECIFICATION	114-18075	-	-
TERMINALS APPLIED Δ 10			
TE TERMINAL	TE TERMINAL	TE TERMINAL	TE TERMINAL
962932-1	1-962932-6	2-962932-1	9-962932-1
965918-1	2-965918-1	1-1703008-6	

WIRE SIZE	CRIMP HEIGHT mm [INCH]	CRIMP HEIGHT REFERENCE SETTING
Δ 10.00mm ²	3.82+/-0.05 [1.150+/- .002]	5.5
Δ 6.00mm ²	3.20+/-0.05 [1.126+/- .002]	12.2

- RECOMMENDED SPARE PARTS
- Δ GREASE BEARING SURFACES LIGHTLY
- 3. LUBRICATE DAILY PER THE APPLICATOR INSTRUCTION SHEET SUPPLIED WITH THE APPLICATOR.
- Δ APPLICATOR SPECIFIC DATA TO BE ENTERED INTO BLANK MEMORY CHIP AT ASSEMBLY. SEE BELOW FOR PART NUMBER:
 PNEUMATIC FEED WITH "SMART APPLICATOR" CONVERSION: 8-2151285-4
 SERVO FEED WITH "FINE CRIMP HEIGHT ADJUST": 8-2151285-5
- 5. ADJUSTMENT OF THE STRIPPER MAY BE REQUIRED WHEN MOVING THE APPLICATOR BETWEEN BENCH AND LEADMAKER APPLICATIONS.
- Δ APPLY PART NUMBER 1-23419-5 LOCTITE TO THREADS OF ITEM 50 & 62. APPLY PART NUMBER 2-23419-6 LOCTITE TO THREADS OF ITEM 242.
- Δ GREASE THREADS, GROOVE AND O-RING ON ITEMS 139 & 152.
- Δ MAGNET MUST BE ORIENTED CORRECTLY IN ORDER TO PROPERLY ACTUATE THE COUNTER.
- Δ CRIMP HEIGHT REFERENCE SETTING WAS THE SETTING USED WHEN THE APPLICATOR WAS QUALIFIED AT THE FACTORY. ADJUSTMENT MAY BE NECESSARY WHEN RUNNING APPLICATOR IN THE FIELD.
- Δ 10 TERMINAL PITCH NOT COMPATIBLE WITH MECHANICAL FEED.
- Δ 11 TO CONVERT THE APPLICATOR TO A NON-CARRIER CUTTING STYLE, REMOVE ITEM 13 AND ATTACH TO THE LOCATION ON BACK SIDE OF THE HOUSING. REFER TO INSTRUCTION SHEET FOR ADDITIONAL INFORMATION.
- Δ 12 USE ITEM #6 WHEN RUNNING 10mm² WIRE. USE ITEM #5 WHEN RUNNING 6mm² WIRE.

***WARNING**
 ON INSTALLATION, SET WIRE DISC, ITEM 40 TO LARGEST WIRE SIZE SETTING. USE OF SETTINGS BELOW MINIMUM REQUIRED CRIMP HEIGHT SETTING WILL CAUSE DAMAGE TO CRIMP TOOLING.

-	1	1	1	2119782-1	FINE ADJUST HEAD ASM, PACIFIC STYLE	251
-	-	-	1	2119640-1	PUSH ROD, AIR FEED	250
-	-	-	1	2079988-1	BUSHING, LCH5-12, MISUMI	249
-	1	1	1	1-22279-3	SPRING, COMPRESSION	246
-77	-27	-25	-22	PART NO	DESCRIPTION	ITEM NO

PACIFIC VERSION
 Shown on sheets 3 of 4 & 4 of 4
 (Atlantic version shown on sheets 1 of 4 & 2 of 4)

SET UP GAUGE	LOC	DIST	REVISIONS					
2119599-1	A	66	P	LTN	DESCRIPTION	DATE	OWN	APVD
			-	-	SEE SHEET 1	-	-	-

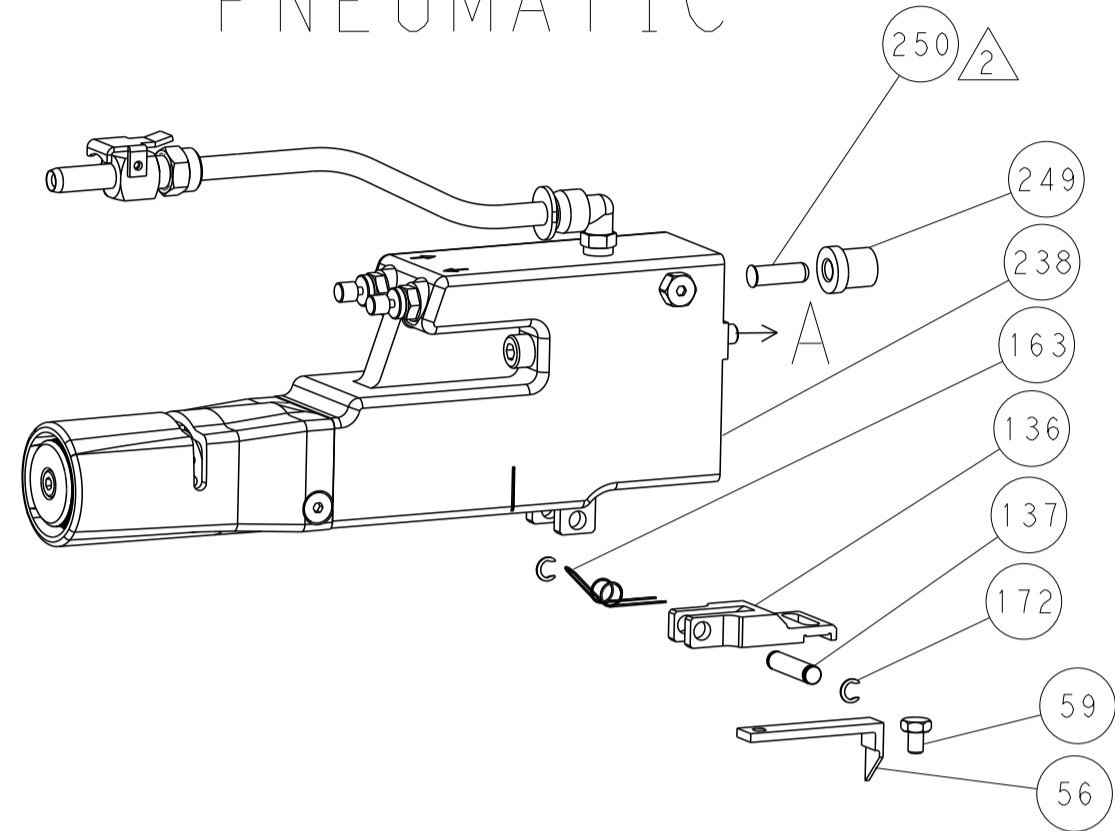
-	1	1	1	2119082-9	CAM, SNAIL, INSULATION ADJUSTMENT	244
-	1	1	1	2079764-1	WASHER, WAVE SPRING, CREST-TO-CREST	243
-	1	1	1	2119083-1	RETAINER, INSULATION DIAL	242
-	1	1	1	7-18023-7	SCR, SKT HD CAP M3 X 4.0	241
-	-	2	-	2168400-6	SHCS, LOW HEAD, RoHS, M5 X 16	240
-	-	-	1	2063440-2	AIR FEED MODULE	238
-	-	1	-	2119740-2	TAG, IDENTIFICATION	213
-	-	1	-	1901094-3	SPACER, FEEDER	198
-	1	1	1	993111-8	PIN, SLOTTED SPRING 3.0 X 12.0	177
-	1	1	1	8-22280-7	SPRING, COMPRESSION	176
-	1	1	1	1752353-2	GUIDE PIN, HOLDDOWN	175
-	1	1	1	1901680-2	GUIDE PIN, HOLDDOWN	174
-	-	-	2	21045-3	RING, RETAIN, EXTERN, 3/16 CRESCENT	172
-	1	1	1	994969-1	MAGNET, RARE EARTH HIGH ENERGY	166
-	REF	REF	REF	994970-2	COUNTER, MAGNETIC	164
-	-	-	1	240638-1	SPRING, FEED FINGER	163
-	1	1	1	8-21084-1	O-RING, .801 ID, .070 DIA. MAT.	152
-	-	-	1	2119641-2	FEED CAM, AIR FEED	151
-	1	1	1	2119798-2	DETENT PIN	145
-	1	1	1	2079383-8	SCR, BHSC, RoHS (M4 X 16)	144
-	4	4	4	2168400-5	SHCS, LOW HEAD, RoHS, M4 X 20	143
-	1	1	1	1-2119656-0	APPLICATOR BASIC ASSEMBLY, SF	141
-	1	1	1	2161312-1	RAM, STEPPED, ASIAN STYLE, SIDE FEED	140
-	1	1	1	2119092-2	BOLT, ADJUSTMENT	139
-	-	-	1	3-23627-7	PIN, RETAIN, GRVD, 3/16 X .854	137
-	-	-	1	2119799-1	HOLDER, FEED FINGER, AF	136
-	-	REF	-	SEE NOTE 4	MEMORY CHIP, PROGRAMMED	135
-	-	1	-	1633743-1	SERVO FEED LATCH ASM	133
-	1	1	1	318563-1	GUARD, FRONT CHIP	119
-	1	1	1	2119955-1	ASSY, LUBRICATOR, SIDE FEED	113
-	1	1	1	1-455888-4	SPACER, CRIMPER	83
-	1	1	1	2-455888-2	SPACER, CRIMPER	82
-	2	2	2	2079383-4	SCR, BHSC, RoHS (M4 X 8)	79
-	1	1	1	1633470-2	EXTENSION PLATE	78
-	1	1	1	2119956-1	DOCUMENTATION PACKAGE	71
-	1	1	1	2119791-9	DEPRESSOR, WIRE	70
-	1	-	1	2119740-1	TAG, IDENTIFICATION	67
-	2	2	2	2168078-1	SCREW, DRIVE, RH, RoHS, 2 x .188	66
-	1	1	1	2119793-1	LIMITER, ADJUSTMENT BOLT	63
-	3	3	3	992763-5	SCR, SET, SOC, CONE POINT, M3 X 4.0	62
-	-	-	1	5-18022-5	SCR, HEX HD CAP, M4 X 6.0	59
-	-	-	1	1338683-8	FEED PAWL	56
-	1	1	1	1-5018030-0	NUT, HEX, REG, RoHS, M3.5	52
-	1	1	1	2031311-1	HOLDDOWN, TERMINAL	51
-	1	1	1	2-1752354-3	STANDOFF, HOLD-DOWN	50
-	-	-	1	18023-9	SCR, SKT HD CAP M4 X 6.0	49
-	1	1	1	1-2079383-5	SCR, BHSC, RoHS (M8 X 40)	41
-	1	1	1	2119645-1	DISC, NUMBERED FA WIRE ADJUSTMENT	40
-	1	1	1	2119957-1	APPLICATOR SHIM PACK	39
-	1	1	1	2119644-1	RAM WASHER, PRECISION	38
-	1	1	1	1-1752356-0	SUPPORT, TERMINAL	34
-	2	2	2	2079383-5	SCR, BHSC, RoHS (M4 X 20)	33
-	1	1	1	2161328-1	HEX HEAD, FLANGED, M5 X 8mm LONG	32
-	1	1	1	1320908-3	SPACER, STRIP GUIDE	30
-	1	1	1	2119959-2	ASSEMBLY, STRIP GUIDE	29
-	1	1	1	1-455888-0	SPACER, CRIMPER	28
-	1	1	1	1320928-4	STRIP GUIDE	24
-	1	1	1	2168083-2	SCR, SKT HD CAP, RoHS, M4 X 8.0	21
-	1	1	1	1-18028-2	WASHER, FLAT, REG M4	20
-	1	1	1	2119533-5	STRIPPER, SIDE FEED	19
-	1	1	1	2119806-1	INSERT, SHEAR	13
-	1	1	1	3-22280-3	SPRING, COMPRESSION	12
-	1	1	1	1-356885-4	STOP, SHEAR	11
-	1	1	1	2119805-1	SHEAR HOLDER, FRONT	10
-	1	1	1	454276-5	FLOATING SHEAR, FRONT	9
-	1	1	1	1976051-4	COMBINATION ANVIL	8
-	-	-	-	-	-	7
-	1	1	1	2119757-8	DEPRESSOR, SHEAR	6
-	1	1	1	2119757-5	DEPRESSOR, SHEAR	5
-	1	1	1	4-238011-5	BLOCK, CRIMPER SPACER	4
-	1	1	1	3-1633961-9	CRIMPER, INSULATION F PREMIUM	3
-	1	1	1	1-455888-8	SPACER, CRIMPER	2
-	1	1	1	5-1633305-3	CRIMPER, WIRE PREMIUM	1
-77	-27	-25	-22	PART NO	DESCRIPTION	ITEM NO

DIMENSIONS:		TOLERANCES UNLESS OTHERWISE SPECIFIED:		OWN	10APR2012	TE Connectivity Harrisburg, PA 17105-3608
mm		0 PLC ±		CHK	10APR2012	
		1 PLC ±		G.BAILEY	10APR2012	
		2 PLC ±		S.XI	10APR2012	
		3 PLC ±		APVD		NAME
		4 PLC ±				Product Spec
		5 PLC ±				APPLICATION SPEC
		6 PLC ±				SIZE
		ANGLES				CAGE CODE
		FINISH				DRAWING NO
						RESTRICTED TO
						WEIGHT
						A1 00779 ©=2151285
						Customer Accessible Production Drawing
						SCALE 1:2 SHEET 3 OF 4 REV B

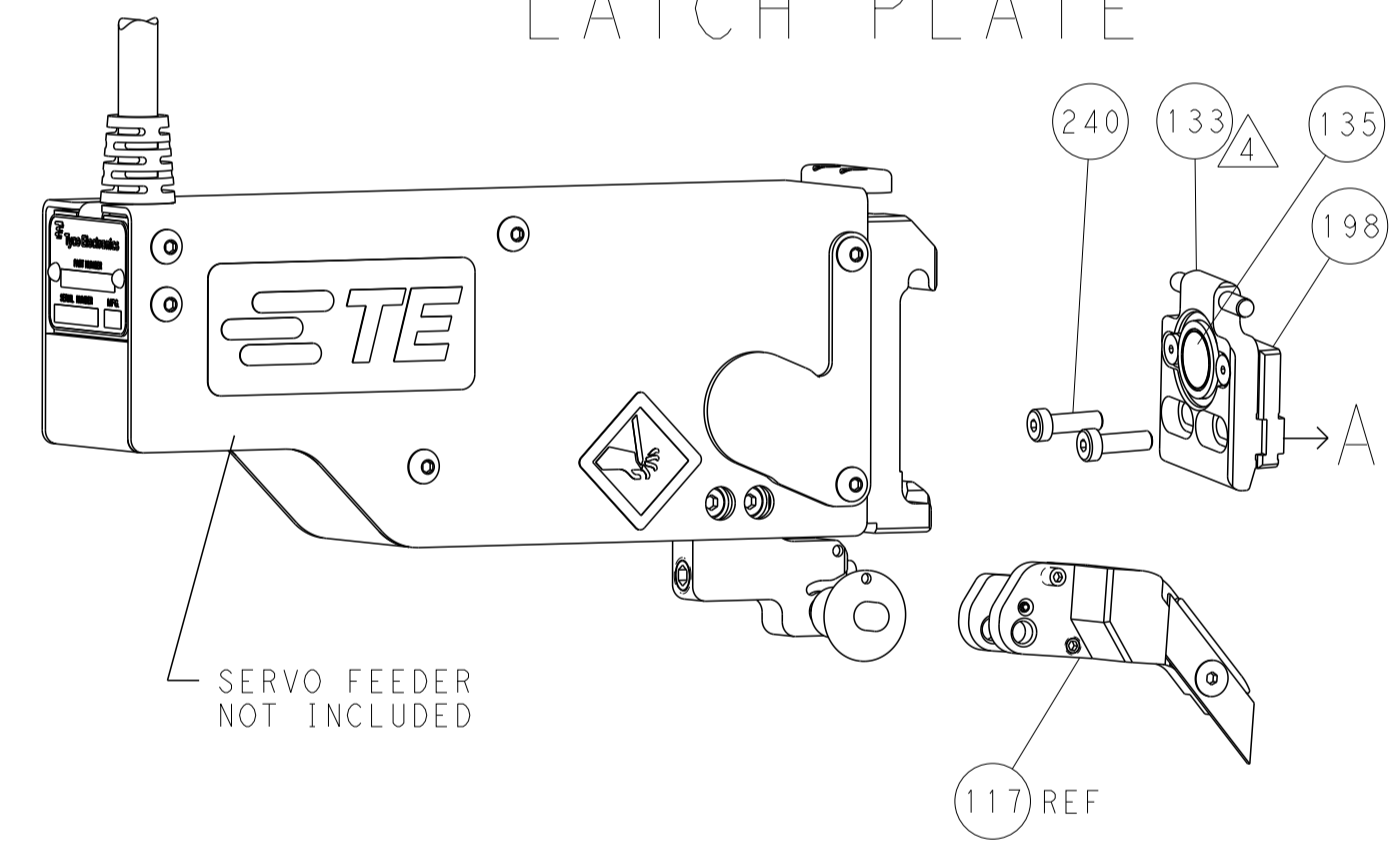
LOC		DIST		REVISIONS			
A	66	P	LTM	DESCRIPTION	DATE	DWN	APVD
		-	-	SEE SHEET 1	-	-	-

FEED TYPE

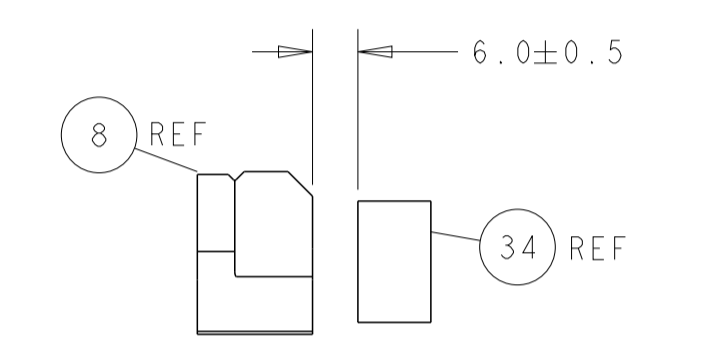
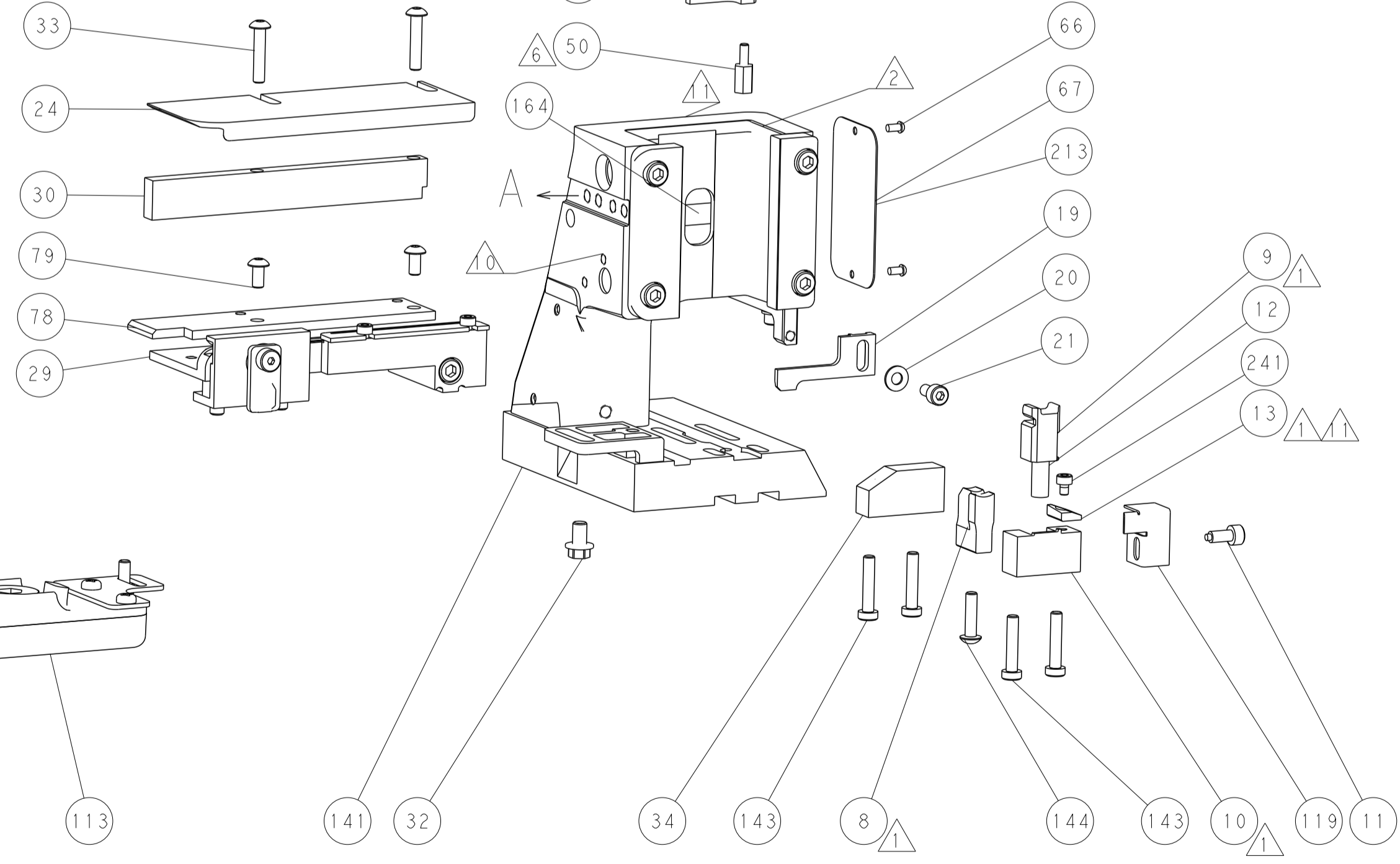
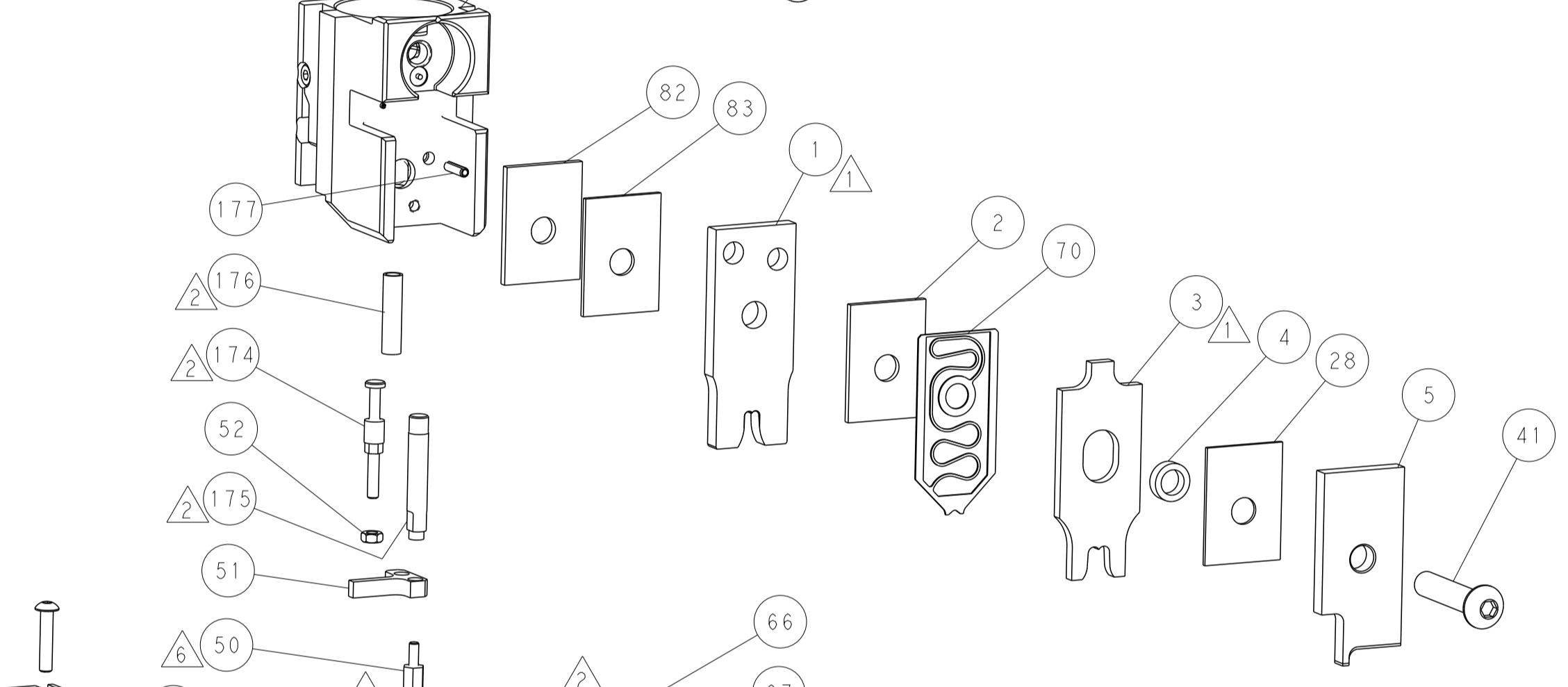
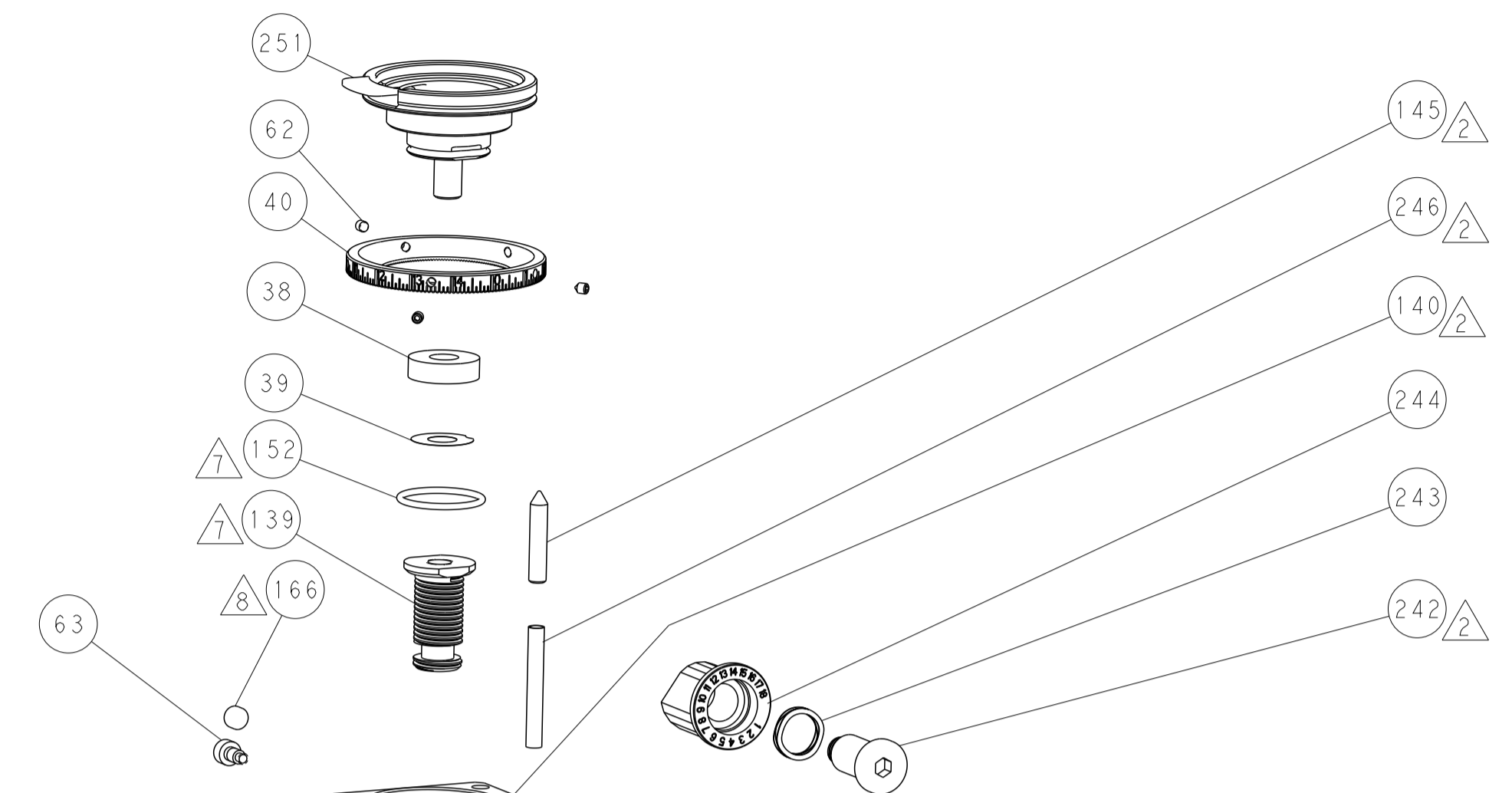
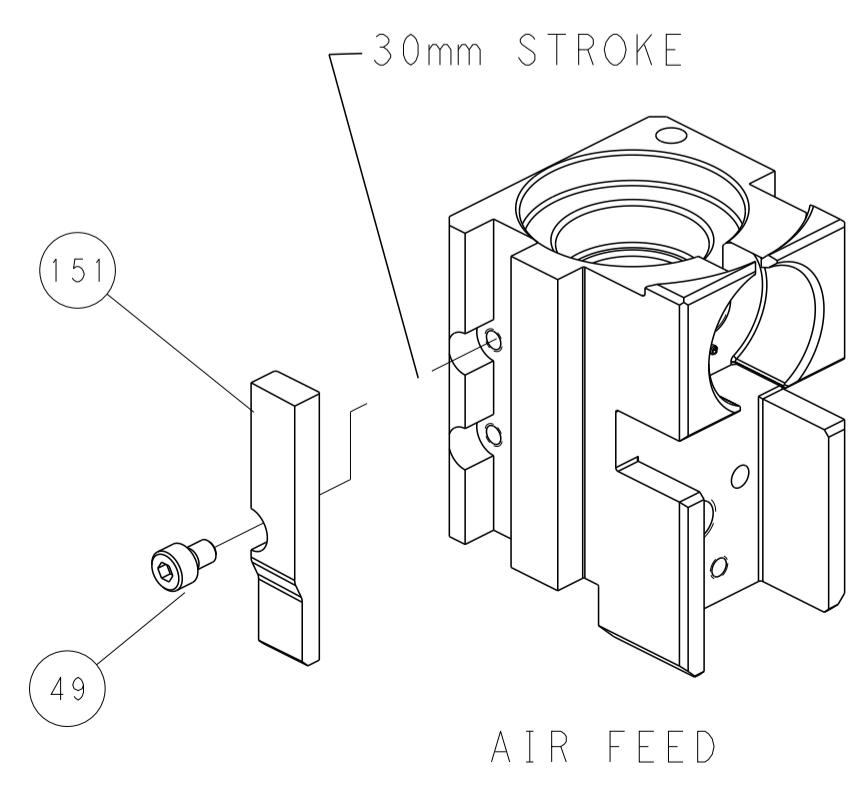
PNEUMATIC



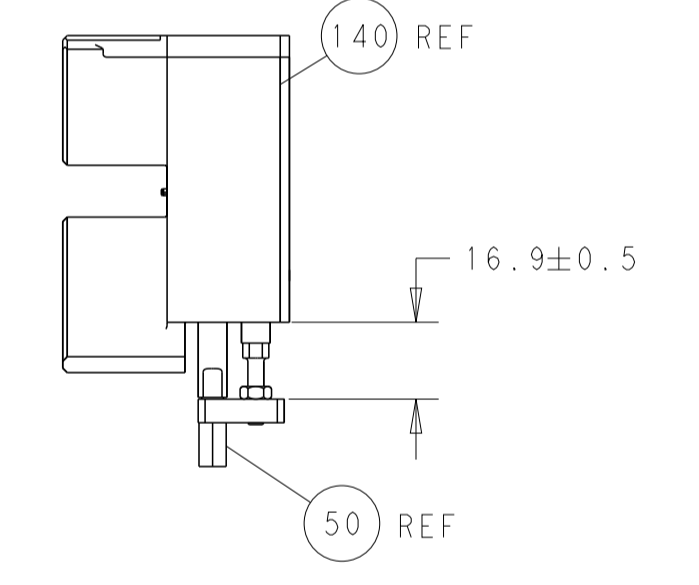
SERVO LATCH PLATE



CAM POSITION

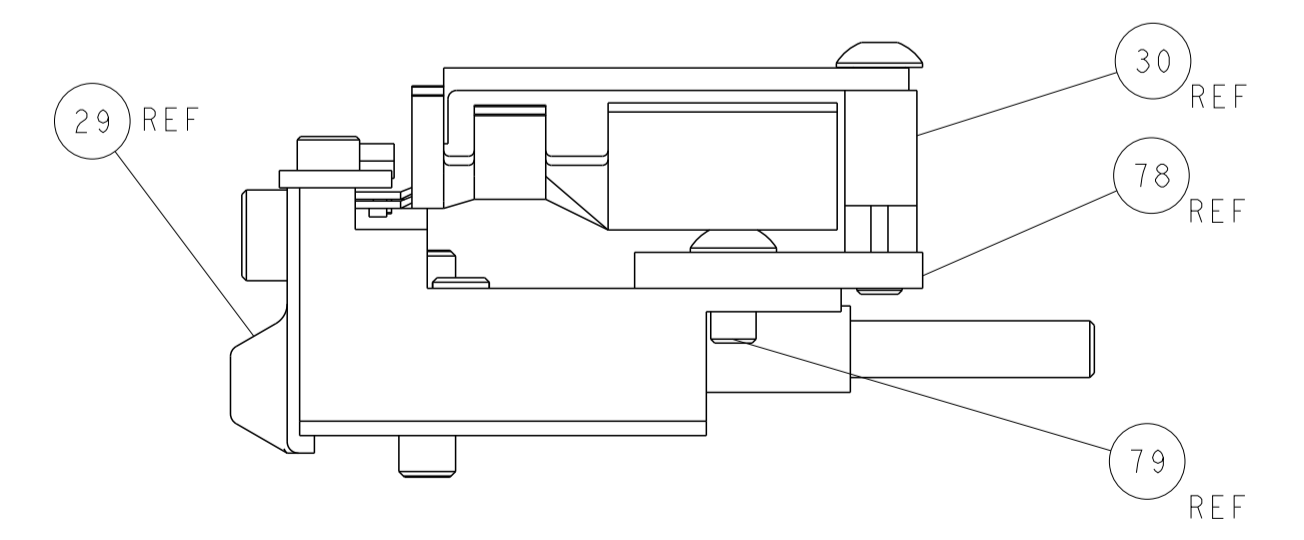


TERMINAL SUPPORT LOCATION



HOLDDOWN SET-UP

ITEM 78 LOCATED AT FRONT HOLES



FEED TRACK POSITION GUIDE BY INSULATION BARREL

PACIFIC VERSION
 Shown on sheets 3 of 4 & 4 of 4
 (Atlantic version shown on sheets 1 of 4 & 2 of 4)

DIMENSIONS:		TOLERANCES UNLESS OTHERWISE SPECIFIED:		DWN Y. YIN 10APR2012		TE Connectivity	
mm	0 PLC ±	1 PLC ±	2 PLC ±	3 PLC ±	4 PLC ±	Harrisburg, PA 17105-3608	
MATERIAL:		FINISH:		CHK G. BAILEY 10APR2012		NAME	
				APVD S. XI 10APR2012		Ocean Side Feed Applicator	
				PRODUCT SPEC		SIZE CAGE CODE DRAWING NO	
				APPLICATION SPEC		RESTRICTED TO	
				WEIGHT		A1 00779 C=2151285	
				Customer Accessible Production Drawing		SCALE 1:2 SHEET 4 OF 4 REV B	