

### Features

- Narrow Bandwidth
- Excellent Rejection
- Excellent Return Loss

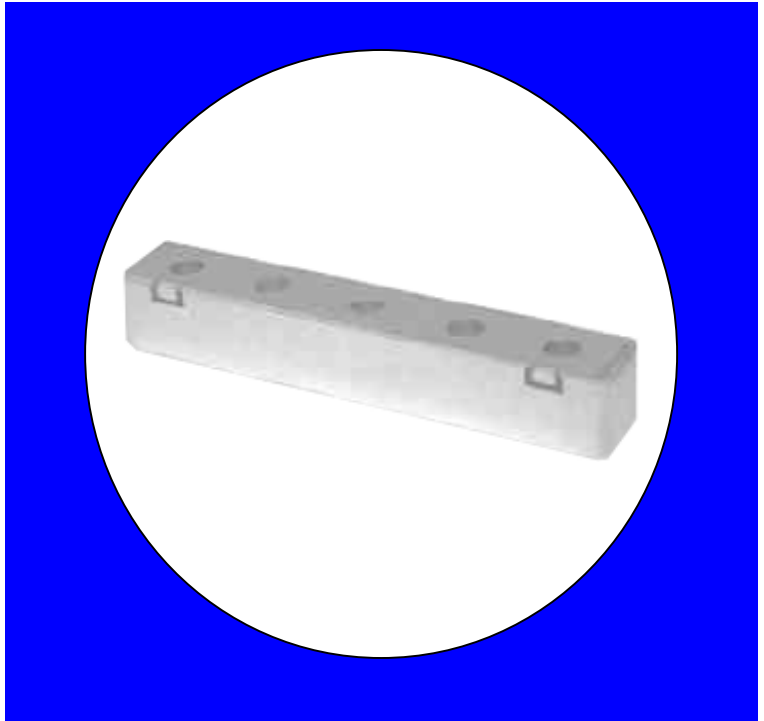
### Description

Surface mount, silver (Ag) coated ceramic filter. Developed for use in CATV applications.

Weight: 16.0 grams typical

Material: Filter is composed of a ceramic block plated with Ag.

Filter complies with RoHS standards.



### Electrical Specifications

Parameter	Frequency (MHz)	Typical @ 25°C	Spec. @ 25°C
Passband Insertion Loss	1052-1056	4.03 dB	4.03 dB max
Passband Return Loss	1052-1056	15.6 dB	15.6 dB min
Attenuation	1029	60.2 dB	60.2 dB min
Attenuation	1044	24.2 dB	24.2 dB min
Attenuation	1064	24.3	24.3 dB min
Attenuation	1079	70.2	70.2 dB min
Power into any port			1 Watt max

Note: Supplier shall test each filter to the critical electrical specifications of the above table. Any subsequent audits may deviate from in value due to measurement repeatability among different test systems. Such deviations shall not exceed the following limits:

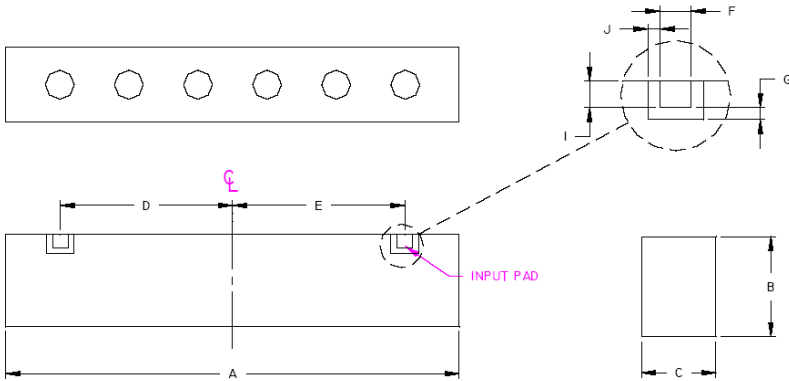
Specification Allowance	
Insertion Loss	0.1 dB
Return Loss	1.0 dB
Stopbands	1.0 dB

\*This product is covered by one or more of the following U.S. and foreign patents including: US 4,692,726;US 4,742,562; US 4,800,348;US 4,829,274;US 5,146,193;EP 0573597;DE 0573597;FR 0573597;JP 508149/92;KR 142171;US 5,162,760;US 5,218,329;US 5,250,916;US 5,327,109;US 5,488,335;CA 2114029;FR 9306297;GB 2273393;JP 3205337;KR 115113;CN 93106228.4;US 5,512,866;EP 0706719;DE 0706719;FR 0706719;GB 0706719;CN 95190359.4;US 5,602,518;US 5,721,520;US 5,745,018;EP 0910875;DE 0910875;DK 0910875;FR 0910875;GB 0910875;IE 0910875;JP 505182/98;KR 10-323013;US 5,994,978;US 6,462,629;CN 00810420.4;US 6,559,735;US 6,650,202;US 6,834,429.Other US and foreign patents pending.

\*CTS Corporation 2006 reserves all copyrights in the layout, design and configuration of the patterns on this product.\*

## Mechanical Drawing

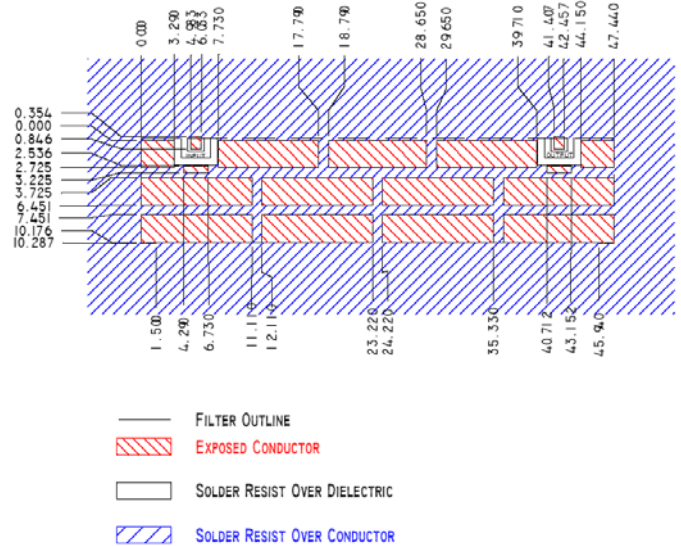
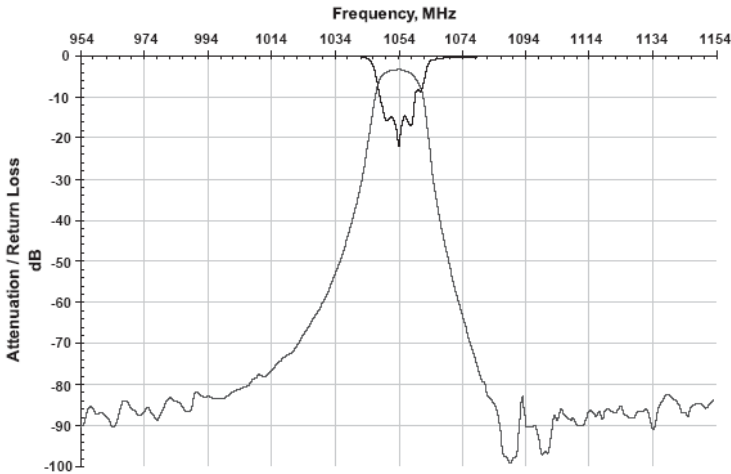
Rev 0 – Origin Date: July 11, 2005 – Revision Date: July 11, 2005



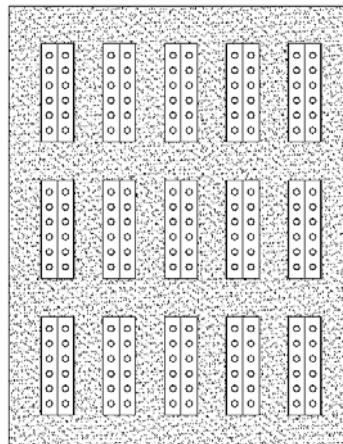
Dim	Nominal (mm)	Tolerance (mm) +/- or max
A	47.921	max
B	10.541	max
C	7.850	max
D	18.212	0.127
E	18.212	0.127
F	1.651	0.127
G	0.635	0.127
I	1.397	0.127
J	0.635	0.127

## Electrical response

## PCB Layout



## Packaging and Marking



7 15 Slot Gray Foam Trays  
(210 max per box)