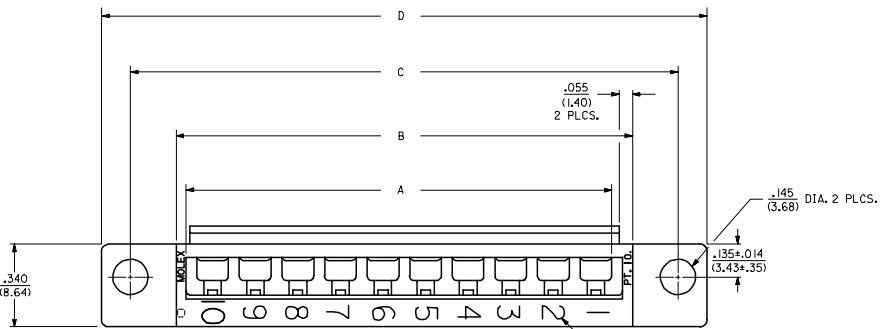


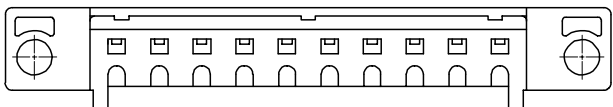
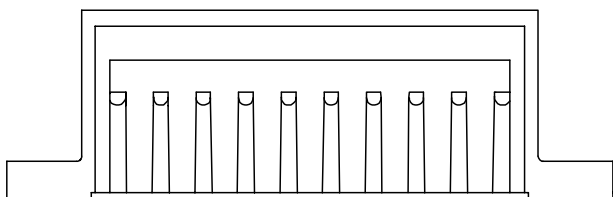
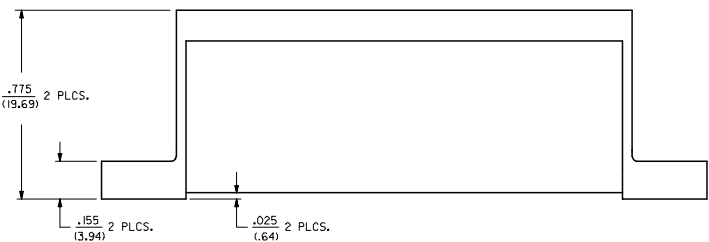
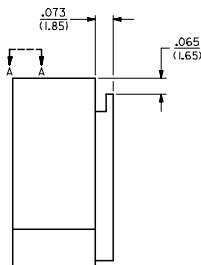
20 19 18 17 16 15 14 13 12 11 10 9 8 7 6 5 4 3 2 1

NOTES:

- △ THESE HOUSINGS ARE FOR USE WITH THE 1457-• TERMINALS AND MAY BE SUBDIVIDED BY USING THE 1461-K KEY.
- △ THE HOUSINGS ARE ONLY AVAILABLE IN 5, 10, 15, AND 20 CIRCUIT SIZES.
- △ PRODUCT SPECIFICATION PS 50-36 APPLIES.
- △ THESE HOUSINGS CONFORM TO U.L. AND C.S.A. REQUIREMENTS.
- △ .060/(1.52) HIGH RAISED NUMERALS.
- △ .125/(3.18) HIGH RECESSED NUMERALS ON A MATTE BACKGROUND.
- △ .09/(2.3) HIGH INK STAMPED NUMERALS.
- B. PACKAGE PER PK-1461-100.



VIEW A-A



4	01
3	0
2	01
1	0
SHT REV	

MODIFY CORE OUTS EC NO: UCP2005-2756 DRWNS: BARRA 2005/09/29 CHK: BARKER 2005/10/18 APPR: SHILLER 2005/10/12	QUALITY SYMBOLS	GENERAL TOLERANCES (UNLESS SPECIFIED)	DIMENSION STYLE	SCALE	DESIGN UNITS	THIRD ANGLE PROJECTION
	▽=0 ▽=0	mm INCH 4 PLACES ± --- ± --- 3 PLACES ± --- ± .010 2 PLACES ± 0.25 ± .014 1 PLACE ± 0.35 ± --- ANGULAR ± 1/2°	IN/MM DRAWN BY DATE AFG 9/1/02/18 CHECKED BY DATE RHR 9/1/02/18 APPROVED BY DATE GWF 9/1/02/18	4:1	INCH	TITLE HOUSING, COMMONING [.025/(.64) OFFSET]
	DRAFT WHERE APPLICABLE MUST REMAIN WITHIN DIMENSIONS	SEE TABLE	MATERIAL NO.	DOCUMENT NO.	MOLEX INCORPORATED	
	SIZE D	THIS DRAWING CONTAINS INFORMATION THAT IS PROPRIETARY TO MOLEX INCORPORATED AND SHOULD NOT BE USED WITHOUT WRITTEN PERMISSION				

SHEET NO. 1 OF 4

19 18 17 16 15 14 13 12 11 10 9 8 7 6 5 4 3 2 1

PART NO.	ENG. NO.	NO. CKTS.	DIM.				CIRCUIT NUMERALS
			A	B	C	D	
07-01-7201	1461-20	20	3.50 (88.9)	3.63 (92.2)	4.00 (101.6)	4.24 (107.7)	11 THRU 20
07-01-7151	1461-15	15	2.62 (66.5)	2.75 (69.9)	3.13 (79.5)	3.37 (85.6)	21 THRU 30
07-01-7101	1461-10	10	1.750 (44.45)	1.875 (47.63)	2.250 (57.15)	2.49 (63.2)	31 THRU 40
07-01-7051	1461-5	5	.875 (22.23)	1.000 (25.40)	1.375 (34.93)	1.615 (41.02)	46 THRU 60

SPECIAL NUMBERED HOUSINGS CHART						
PART NO.	ENG. NO.	NO. CKTS.	CIRCUIT NUMERALS			
07-01-7202	1461-20-1	20	21 THRU 40			
07-01-7203	1461-20-2	20	41 THRU 60			
07-01-7204	1461-20-3	20	61 THRU 80			

INK STAMPED HOUSINGS								
BEFORE INK STAMP	AFTER INK STAMP	BEFORE INK STAMP	AFTER INK STAMP	NO. CKTS.	DIM. A	DIM. B	DIM. C	DIM. D
007-01-7206	1461-20B	007-01-7207	1461-20C	20	3.50 (88.9)	3.63 (92.2)	4.00 (101.6)	4.24 (107.7)
007-01-7156	1461-15B	007-01-7157	1461-15C	15	2.62 (66.5)	2.75 (69.9)	3.13 (79.5)	3.37 (85.6)
007-01-7106	1461-10B	007-01-7107	1461-10C	10	1.750 (44.45)	1.875 (47.63)	2.250 (57.15)	2.49 (63.2)
007-01-7056	1461-5B	007-01-7057	1461-5C	5	.875 (22.23)	1.000 (25.40)	1.375 (34.93)	1.615 (41.02)

SPECIAL INK STAMPED HOUSINGS CHART						
BEFORE INK STAMP	AFTER INK STAMP	NO. CKTS.	CIRCUIT NUMERALS			
007-01-7206	1461-20B	007-01-7208	1461-20-1C	20	21 THRU 40	
		007-01-7209	1461-20-2C	20	41 THRU 60	
		007-01-7201	1461-20-3C	20	61 THRU 80	

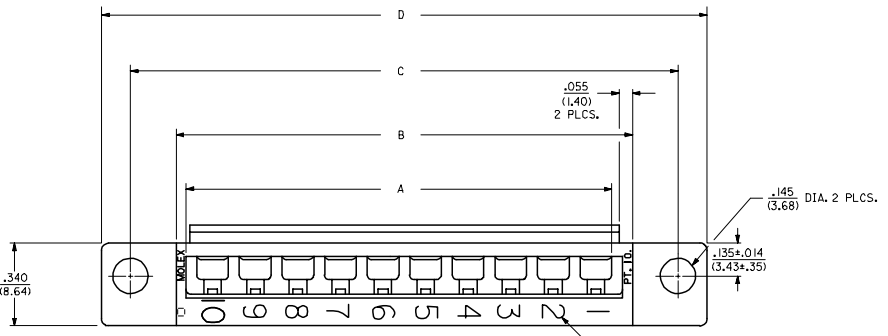
LINE	REV	DESCRIPTION	DATE	BY	CHKD
1		REVISED			
2		REVISED			
3		REVISED			
4		REVISED			
5		REVISED			
6		REVISED			
7		REVISED			
8		REVISED			
9		REVISED			
10		REVISED			
11		REVISED			
12		REVISED			
13		REVISED			
14		REVISED			
15		REVISED			
16		REVISED			
17		REVISED			
18		REVISED			
19		REVISED			
20		REVISED			

HOUSING, COMMUNING
 [1025/1484] (OFF SHEET)
 CHART 30-1461
 DATE 10/22/91
 BY []
 CHECKED []
 APPROVED []
 TITLE []
 PART NO. []
 QTY []
 UNIT []
 PRICE []
 TOTAL []
 ORDER NO. []
 ORDER DATE []
 ORDER QTY []
 ORDER PRICE []
 ORDER TOTAL []
 ORDER BY []
 ORDER FOR []
 ORDER FROM []
 ORDER TO []
 ORDER BY []
 ORDER FOR []
 ORDER FROM []
 ORDER TO []

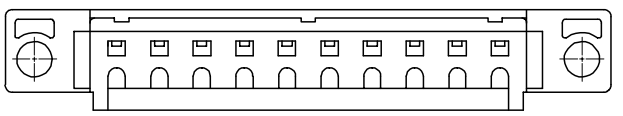
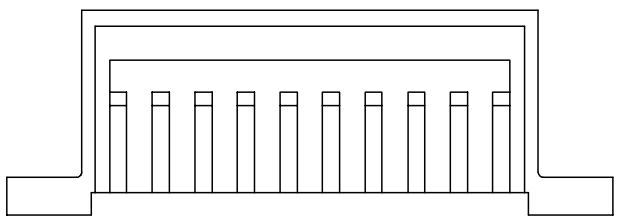
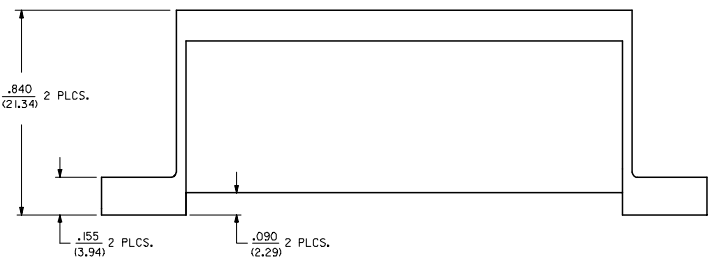
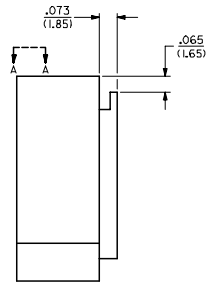
20 19 18 17 16 15 14 13 12 11 10 1461 9 8 7 6 5 4 3 2 1

NOTES:

- △ THESE HOUSINGS ARE FOR USE WITH THE 1457-• TERMINALS AND MAY BE SUBDIVIDED BY USING THE 1461-K KEY.
- △ THE HOUSINGS ARE ONLY AVAILABLE IN 5, 10, 15, AND 20 CIRCUIT SIZES.
- △ PRODUCT SPECIFICATION PS 50-36 APPLIES.
- △ THESE HOUSINGS CONFORM TO U.L. AND C.S.A. REQUIREMENTS.
- △ .060/(1.52) HIGH RAISED NUMERALS.
- △ .125/(3.18) HIGH RECESSED NUMERALS ON A MATTE BACKGROUND.
- △ .09/(2.3) HIGH INK STAMPED NUMERALS.



VIEW A-A



MATERIAL:

POLYESTER, UNFILLED, 94V-0,
COLOR: BLACK,
(REF.: SMES 128C-1)

MODIFY COUR OUTS EC NO: UCP2005-2756 DRWNS: BARRA 2005/09/29 CHKD: BARKER 2005/10/18 APPR: SHILLER 2005/10/12	QUALITY SYMBOLS	GENERAL TOLERANCES (UNLESS SPECIFIED)	DIMENSION STYLE	SCALE	DESIGN UNITS	THIRD ANGLE PROJECTION
	▽=0 ▽=0	mm INCH 4 PLACES ± --- ± --- 3 PLACES ± --- ± .010 2 PLACES ± 0.25 ± .014 1 PLACE ± 0.35 ± --- ANGULAR ±1/2°	IN/MM DRAWN BY DATE AFG 95/12/18 CHECKED BY DATE RHR 95/12/18 APPROVED BY DATE GWF 95/12/18	4:1	INCH	TITLE HOUSING, COMMONING [.090/(2.29) OFFSET]
	DRAFT WHERE APPLICABLE MUST REMAIN WITHIN DIMENSIONS	SEE TABLE	MATERIAL NO.	DOCUMENT NO.	SHEET NO.	
	SIZE D	THIS DRAWING CONTAINS INFORMATION THAT IS PROPRIETARY TO MOLEX INCORPORATED AND SHOULD NOT BE USED WITHOUT WRITTEN PERMISSION	SD-1461-*		3 OF 4	

19 18 17 16 15 14 13 12 11 10 9 8 7 6 5 4 3 2 1