

PLEASE CHECK WWW.MOLEX.COM FOR LATEST PART INFORMATION

Part Number: [63445-1810](#)

Status: **Active**

Description: Anvil

Documents:

[RoHS Certificate of Compliance \(PDF\)](#)

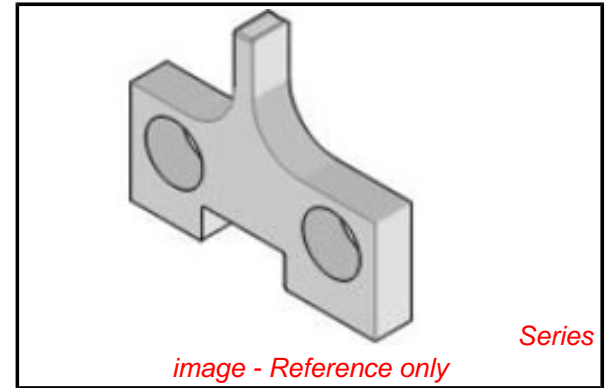
General

Product Family	Application Tooling
Series	T2504
Comments	See Tooling Specification (PDF) Above
Function	Cutter
Geographic Area	Global
Level of Automation	Semi-Automatic
More Detailed Tech Information	applicationtooling@molex.com
Product Name	N/A
Survey	www.molex.com//review/apptool_survey.html
Tool Type	Anvil
UPC	800753156371

Material Info

Reference - Drawing Numbers

Application Tooling Documents ATS-STANDARD-PARTS



EU RoHS

**ELV and RoHS
Compliant**

REACH SVHC

Not Reviewed

Low-Halogen Status

Not Reviewed

China RoHS



**Need more information on product
environmental compliance?**

Email productcompliance@molex.com
For a multiple part number RoHS Certificate of
Compliance, [click here](#)

Please visit the [Contact Us](#) section for any
non-product compliance questions.

Search Parts in this Series

[T2504Series](#)

Use With

[63821-7000](#) , [63821-7070](#) , [63850-6000](#) ,
[63850-6070](#) , [63854-1000](#) , [63854-1070](#) ,
[63860-6000](#) , [63860-6070](#) , [63864-1000](#) ,
[63864-1070](#) , [63900-0100](#) , [63900-0170](#) ,
[63900-6300](#) , [63900-6370](#) , [63910-0100](#) ,
[63910-0170](#)