

# HXA Series

- High reliability and high voltage are realized by hybrid electrolyte
- Endurance with ripple current : 4,000 hours at 125°C
- For high temperature and high reliability applications.  
(Automotive equipment, Base station equipment, etc.)
- RoHS2 Compliant
- Halogen Free
- AEC-Q200 compliant : Please contact Chemi-Con for more details, test data, information.

HXA

Higher temperature  
HXB P3-14

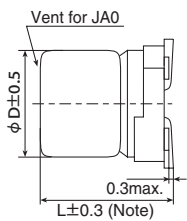


## SPECIFICATIONS

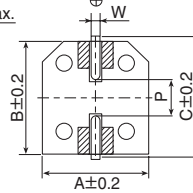
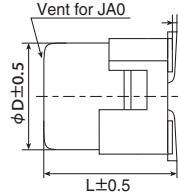
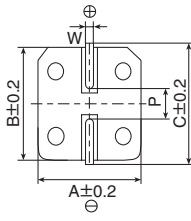
Items	Characteristics						
Category	-55 to +125°C						
Temperature Range	-55 to +125°C						
Rated Voltage Range	16 to 80V <sub>dc</sub>						
Capacitance Tolerance	±20% (M) (at 20°C, 120Hz)						
Leakage Current	I=0.01CV Where, I : Max. leakage current (μA), C: Nominal capacitance(μF), V : Rated voltage(V) (at 20°C after 2 minutes)						
Dissipation Factor (tan δ)	Rated voltage(V <sub>dc</sub> )	16V	25V	35V	50V	63V	80V
	tan δ (Max.)	0.16	0.14	0.12	0.10	0.08	0.08
Low Temperature Characteristics (Max. Impedance Ratio)	Z(-25°C)/Z(+20°C) ≤ 1.5 Z(-55°C)/Z(+20°C) ≤ 2.0 (at 100kHz)						
Endurance	The following specifications shall be satisfied when the capacitors are restored to 20°C after subjected to DC voltage with the rated ripple current is applied (the peak voltage shall not exceed the rated voltage) for 4,000 hours at 125°C.						
	Capacitance change	≤ ±30% of the initial value					
	D.F. (tan δ)	≤ 200% of the initial specified value					
	ESR	≤ 200% of the initial specified value					
	Leakage current	≤ The initial specified value					
Shelf Life	The following specifications shall be satisfied when the capacitors are restored to 20°C after exposing them for 1,000 hours at 125°C without voltage applied. Before the measurement, the capacitor shall be preconditioned by applying voltage according to item 4.1 of JIS C 5101-4.						
	Capacitance change	≤ ±30% of the initial value					
	D.F. (tan δ)	≤ 200% of the initial specified value					
	ESR	≤ 200% of the initial specified value					
	Leakage current	≤ The initial specified value					

## DIMENSIONS [mm]

- Terminal Code : A
- Size code : F61 to JA0
- Terminal Code : G(Vibration resistant structure)
- Size code : HA0 and JA0



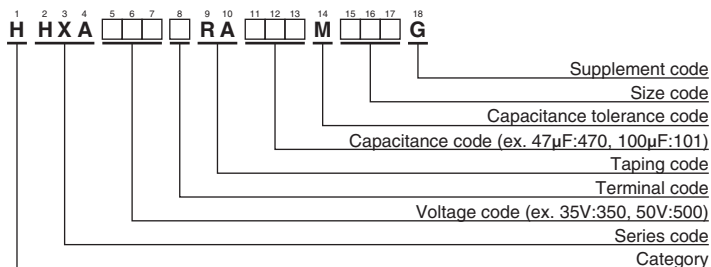
Note : L±0.5 for HA0 and JA0



▨ : Dummy terminals

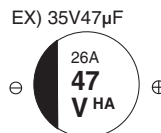
Size Code	φD	L	A	B	C	W	P
F61	6.3	5.8	6.6	6.6	7.2	0.5 to 0.8	1.9
F80	6.3	7.7	6.6	6.6	7.2	0.5 to 0.8	1.9
HA0	8	10.0	8.3	8.3	9.0	0.7 to 1.1	3.1
JA0	10	10.0	10.3	10.3	11.0	0.7 to 1.1	4.5

## PART NUMBERING SYSTEM



Please refer to "Product code guide (conductive polymer hybrid type)"

## MARKING



## Rated voltage symbol

Rated voltage (V <sub>dc</sub> )	Symbol
16	C
25	E
35	V
50	H
63	J
80	K

**HXA**Series

**◆STANDARD RATINGS**

WV (V <sub>dc</sub> )	Cap (μF)	Size code	ESR (mΩ max./20°C, 100kHz)	Rated ripple current (mA <sub>rms</sub> /125°C, 100kHz)	Part No.
16	82	F61	45	950	HHXA160ARA820MF61G
	150	F80	27	1,450	HHXA160ARA151MF80G
	270	HA0	22	1,700	HHXA160□RA271MHA0G
	470	JA0	18	2,100	HHXA160□RA471MJA0G
25	47	F61	50	900	HHXA250ARA470MF61G
	56	F61	50	900	HHXA250ARA560MF61G
	68	F80	30	1,400	HHXA250ARA680MF80G
	100	F80	30	1,400	HHXA250ARA101MF80G
	150	HA0	27	1,600	HHXA250□RA151MHA0G
	220	HA0	27	1,600	HHXA250□RA221MHA0G
	270	JA0	20	2,000	HHXA250□RA271MJA0G
	330	JA0	20	2,000	HHXA250□RA331MJA0G
35	27	F61	60	900	HHXA350ARA270MF61G
	47	F61	60	900	HHXA350ARA470MF61G
	47	F80	35	1,400	HHXA350ARA470MF80G
	68	F80	35	1,400	HHXA350ARA680MF80G
	100	HA0	27	1,600	HHXA350□RA101MHA0G
	150	HA0	27	1,600	HHXA350□RA151MHA0G
	150	JA0	20	2,000	HHXA350□RA151MJA0G
	270	JA0	20	2,000	HHXA350□RA271MJA0G
50	10	F61	80	750	HHXA500ARA100MF61G
	15	F80	40	1,100	HHXA500ARA150MF80G
	22	F61	80	750	HHXA500ARA220MF61G
	33	F80	40	1,100	HHXA500ARA330MF80G
	33	HA0	30	1,250	HHXA500□RA330MHA0G
	47	HA0	30	1,250	HHXA500□RA470MHA0G
	56	JA0	25	1,600	HHXA500□RA560MJA0G
	68	HA0	30	1,250	HHXA500□RA680MHA0G
100	JA0	25	1,600	HHXA500□RA101MJA0G	
63	6.8	F61	120	700	HHXA630ARA6R8MF61G
	10	F61	120	700	HHXA630ARA100MF61G
	10	F80	80	900	HHXA630ARA100MF80G
	22	F80	80	900	HHXA630ARA220MF80G
	22	HA0	40	1,100	HHXA630□RA220MHA0G
	33	HA0	40	1,100	HHXA630□RA330MHA0G
	33	JA0	30	1,400	HHXA630□RA330MJA0G
	56	JA0	30	1,400	HHXA630□RA560MJA0G
80	22	HA0	45	1,100	HHXA800□RA220MHA0G
	39	JA0	35	1,200	HHXA800□RA390MJA0G

□ : Enter the appropriate terminal code.