



IF Filters for Narrowband Cellular Phones

Series/Type: **B4864**

The following products presented in this data sheet are being withdrawn.

Ordering Code	Substitute Product	Date of Withdrawal	Deadline Last Orders	Last Shipments
B39181B4864Z710		14.06.2006	31.08.2006	30.09.2006

For further information please contact your nearest EPCOS sales office, which will also support you in selecting a suitable substitute. The addresses of our worldwide sales network are presented at www.epcos.com/sales.



SAW Components

B4864

Low Loss Filter for Mobile Communication

183,60 MHz

Data Sheet



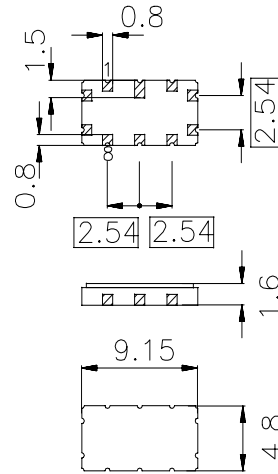
Features

- Low-loss IF filter for mobile telephone
- Channel selection in AMPS systems
- Filter surface passivated
- Balanced or unbalanced operation possible
- Package for **Surface Mounted Technology (SMT)**

Terminals

- Ni, gold plated

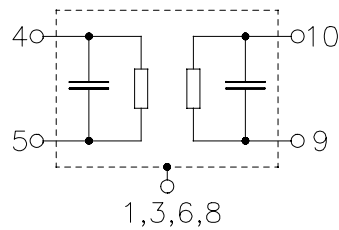
Ceramic package **QCC10B**



Dimensions in mm, approx. weight 0,23 g

Pin configuration

- | | |
|---------|----------------------------------|
| 10 | Input |
| 5 | Output |
| 9 | Balanced input or input ground |
| 4 | Balanced output or output ground |
| 1,3,6,8 | Case ground |
| 2,7 | Not connected |



Type	Ordering code	Marking and Package according to	Packing according to
B4864	B39181-B4864-Z710	C61157-A7-A49	F61064-V8035-Z000

Electrostatic Sensitive Device (ESD)

Maximum ratings

Operable temperature range	T	- 25/+ 75	°C
Storage temperature range	T_{stg}	- 40/+ 85	°C
DC voltage	V_{DC}	13	V
Source power	P_s	10	dBm



SAW Components

B4864

Low Loss Filter for Mobile Communication

183,60 MHz

Data Sheet



Characteristics

Operating temperature range: $T = -25^{\circ}\text{C} \dots 75^{\circ}\text{C}$
 Terminating source impedance: $Z_S = 410 \Omega \parallel -0,4 \text{ pF}$
 Terminating load impedance: $Z_L = 410 \Omega \parallel -0,4 \text{ pF}$

		min.	typ.	max.	
Nominal center frequency	f_N	—	183,60	—	MHz
Filter bandwidth at -5 dB		+/-11	62	—	kHz
Minimum insertion attenuation (including losses in the matching network without loss of the balun)	α_{\min}	—	4,8	6,0	dB
Group delay ripple (p-p) $f_N - 13,0 \text{ kHz} \dots f_N + 13,0 \text{ kHz}$	$\Delta\tau$	—	2,0	10,0	μs
Relative attenuation (relative to α_{\min})	α_{rel}				
$f_N - 11,0 \text{ kHz}$		—	0,5	5	dB
$f_N + 11,0 \text{ kHz}$		—	0,5	5	dB
$f_N - 120,0 \text{ kHz} \dots f_N - 60,0 \text{ kHz}$		11	30	—	dB
$f_N + 60,0 \text{ kHz} \dots f_N + 120,0 \text{ kHz}$		11	24	—	dB
$f_N \pm 120,0 \text{ kHz} \dots f_N \pm 130,0 \text{ kHz}$		43	50	—	dB
$f_N \pm 130,0 \text{ kHz} \dots f_N \pm 360,0 \text{ kHz}$		45	55	—	dB
$f_N \pm 360,0 \text{ kHz} \dots f_N \pm 1,4 \text{ MHz}$		40	60	—	dB
Impedance within the passband					
Input: $Z_{\text{IN}} = R_{\text{IN}} \parallel C_{\text{IN}}$		—	410 \parallel 0,4	—	$\Omega \parallel \text{pF}$
Output: $Z_{\text{OUT}} = R_{\text{OUT}} \parallel C_{\text{OUT}}$		—	410 \parallel 0,4	—	$\Omega \parallel \text{pF}$
Temperature coefficient of frequency ¹⁾	TC_f	—	-0,036	—	ppm/K ²
Turnover temperature	T_0	—	25	—	$^{\circ}\text{C}$

¹⁾ Temperature dependance of f_c : $f_c(T) = f_c(T_0)(1 + TC_f(T - T_0)^2)$



SAW Components

B4864

Low Loss Filter for Mobile Communication

183,60 MHz

Data Sheet



Characteristics

Operating temperature range: $T = -30^{\circ}\text{C} \dots 80^{\circ}\text{C}$
 Terminating source impedance: $Z_S = 410 \Omega \parallel -0,4 \text{ pF}$
 Terminating load impedance: $Z_L = 410 \Omega \parallel -0,4 \text{ pF}$

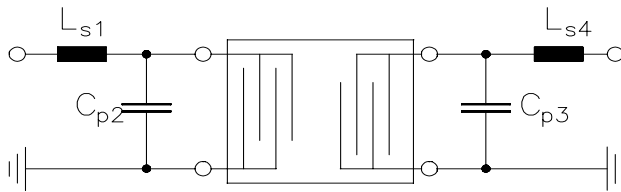
		min.	typ.	max.	
Nominal center frequency	f_N	—	183,60	—	MHz
Filter bandwidth at -5 dB		+/-11	62	—	kHz
Minimum insertion attenuation (including losses in the matching network without loss of the balun)	α_{\min}	—	4,8	6,0	dB
Group delay ripple (p-p) $f_N - 13,0 \text{ kHz} \dots f_N + 13,0 \text{ kHz}$	$\Delta\tau$	—	2,0	10,0	μs
Relative attenuation (relative to α_{\min})	α_{rel}				
$f_N - 11,0 \text{ kHz}$		—	0,5	5	dB
$f_N + 11,0 \text{ kHz}$		—	0,5	5	dB
$f_N - 120,0 \text{ kHz} \dots f_N - 60,0 \text{ kHz}$		8	30	—	dB
$f_N + 60,0 \text{ kHz} \dots f_N + 120,0 \text{ kHz}$		8	24	—	dB
$f_N \pm 120,0 \text{ kHz} \dots f_N \pm 130,0 \text{ kHz}$		40	50	—	dB
$f_N \pm 130,0 \text{ kHz} \dots f_N \pm 360,0 \text{ kHz}$		42	55	—	dB
$f_N \pm 360,0 \text{ kHz} \dots f_N \pm 1,4 \text{ MHz}$		40	60	—	dB
Impedance within the passband					
Input: $Z_{\text{IN}} = R_{\text{IN}} \parallel C_{\text{IN}}$		—	410 \parallel 0,4	—	$\Omega \parallel \text{pF}$
Output: $Z_{\text{OUT}} = R_{\text{OUT}} \parallel C_{\text{OUT}}$		—	410 \parallel 0,4	—	$\Omega \parallel \text{pF}$
Temperature coefficient of frequency ¹⁾	TC_f	—	-0,036	—	ppm/K ²
Turnover temperature	T_0	—	25	—	$^{\circ}\text{C}$

¹⁾ Temperature dependance of f_c : $f_c(T) = f_c(T_0)(1 + TC_f(T - T_0)^2)$



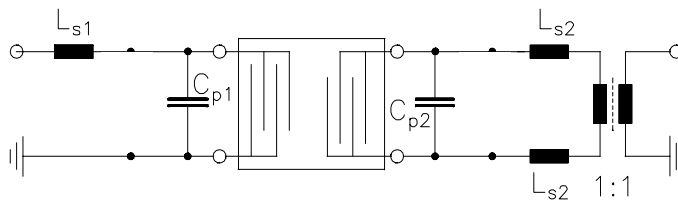
Recommended pin configurations / test matching networks:

a) single-ended 50Ω / single-ended 50Ω



Input : Pin 10
Output : Pin 5
 $L_{s1} = 100 \text{ nH}$
 $C_{p2} = 3,9 \text{ pF}$
 $C_{p3} = 3,9 \text{ pF}$
 $L_{s4} = 100 \text{ nH}$

b) single-ended 50Ω / balanced 50Ω



Input : Pin 10
Output : Pins 5 and 4
 $L_{s1} = 100 \text{ nH}$
 $C_{p1} = 3,9 \text{ pF}$
 $C_{p2} = 3,9 \text{ pF}$
 $L_{s2} = 39 / 47 \text{ nH}$

Note :

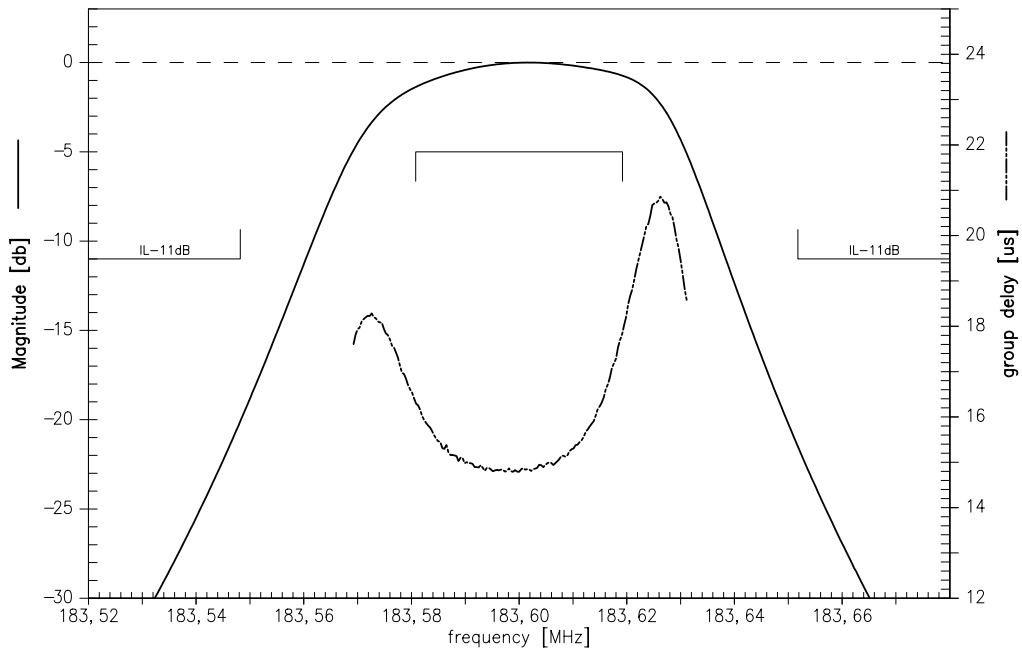
The balanced network is realized using TOKO 1:1 balun B5FL. The insertion attenuation of a balun is 0.3 dB at 183.6 MHz. The loss of the balun is not included in the specified filter insertion attenuation.

The level of ultimate suppression may be limited by electromagnetic feedthrough depending on the layout of the pcb and the arrangement of the matching components.

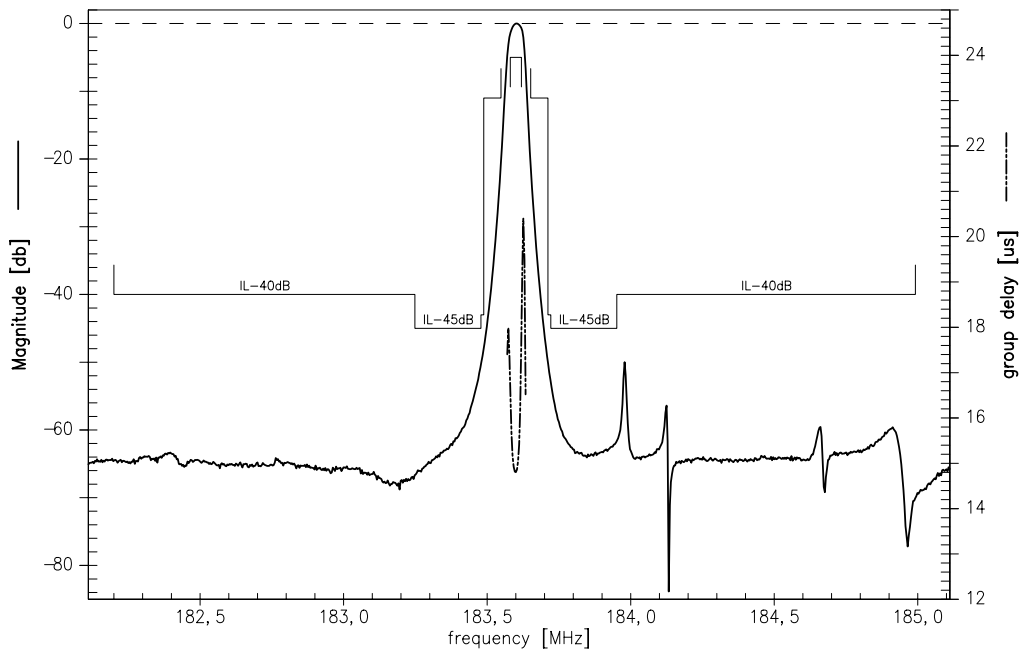
The above mentioned characteristics can be realized either in balanced or in unbalanced mode of operation.



Normalized transfer function passband (measured single ended / single ended)



Normalized transfer function wideband (measured single ended / single ended)





SAW Components

B4864

Low Loss Filter for Mobile Communication

183,60 MHz

Data Sheet



Published by EPCOS AG
Surface Acoustic Wave Components Division, OFW E MF
P.O. Box 80 17 09, D-81617 München

© EPCOS AG 1999. All Rights Reserved.

As far as patents or other rights of third parties are concerned, liability is only assumed for components per se, not for applications, processes and circuits implemented within components or assemblies.

The information describes the type of component and shall not be considered as assured characteristics.

Terms of delivery and rights to change design reserved.

For questions on technology, prices and delivery please contact the sales offices of EPCOS AG or the international representatives.

Due to technical requirements components may contain dangerous substances. For information on the type in question please also contact one of our sales offices.