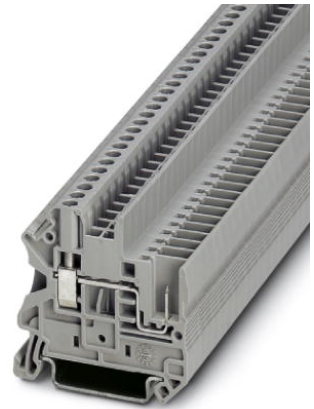


UT 2,5/1P

Order No.: 3045017



<http://eshop.phoenixcontact.de/phoenix/treeViewClick.do?UID=3045017>

Screw terminal block, Type of connection: Screw connection, Screw connection, Cross section: 0.14 mm² - 4 mm², AWG 26 - 12, Width: 5.2 mm, Color: gray, Mounting type: NS 35/7.5, NS 35/15

Commercial data

GTIN (EAN)	4017918975357
sales group	A870
Pack	50 pcs.
Customs tariff	85369010
Weight/Piece	0.00751 KG
Catalog page information	Page 240 (CL-2009)

Product notes

WEEE/RoHS-compliant since:
01/01/2003



<http://www.download.phoenixcontact.com>
Please note that the data given here has been taken from the online catalog. For comprehensive information and data, please refer to the user documentation. The General Terms and Conditions of Use apply to Internet downloads.

Technical data

General

Number of levels	1
Number of connections	2
Color	gray
Insulating material	PA

Inflammability class acc. to UL 94	V0
Bridge accessories	3030213 FBS 10-5 24 A

Dimensions

Width	5.2 mm
Length	47.6 mm
Height NS 35/7.5	47.5 mm
Height NS 35/15	55 mm

Technical data

Maximum load current	24 A
Rated surge voltage	6 kV
Pollution degree	3
Surge voltage category	III
Insulating material group	I
Connection in acc. with standard	IEC 61984
Nominal current I_N	24 A
Nominal voltage U_N	500 V
Open side panel	ja

Connection data

Conductor cross section solid min.	0.14 mm ²
Conductor cross section solid max.	4 mm ²
Conductor cross section stranded min.	0.14 mm ²
Conductor cross section stranded max.	4 mm ²
Conductor cross section AWG/kcmil min.	26
Conductor cross section AWG/kcmil max	12
Conductor cross section stranded, with ferrule without plastic sleeve min.	0.14 mm ²
Conductor cross section stranded, with ferrule without plastic sleeve max.	2.5 mm ²
Conductor cross section stranded, with ferrule with plastic sleeve min.	0.14 mm ²
Conductor cross section stranded, with ferrule with plastic sleeve max.	2.5 mm ²
2 conductors with same cross section, solid min.	0.14 mm ²
2 conductors with same cross section, solid max.	1.5 mm ²
2 conductors with same cross section, stranded min.	0.14 mm ²

2 conductors with same cross section, stranded max.	1.5 mm ²
2 conductors with same cross section, stranded, TWIN ferrules with plastic sleeve, min.	0.5 mm ²
2 conductors with same cross section, stranded, TWIN ferrules with plastic sleeve, max.	1.5 mm ²
2 conductors with same cross section, stranded, ferrules without plastic sleeve, min.	0.14 mm ²
2 conductors with same cross section, stranded, ferrules without plastic sleeve, max.	1.5 mm ²
Type of connection	Screw connection
Stripping length	9 mm
Internal cylindrical gage	A3
Screw thread	M3
Tightening torque, min	0.5 Nm
Tightening torque max	0.6 Nm

Certificates / Approvals



Certification CSA, CUL, UL

CSA

Nominal voltage U_N	300 V
Nominal current I_N	20 A
AWG/kcmil	26-12

CUL

Nominal voltage U_N	300 V
Nominal current I_N	20 A
AWG/kcmil	26-12

UL

Nominal voltage U_N	300 V
Nominal current I_N	20 A
AWG/kcmil	26-12

Accessories		
Item	Designation	Description
Assembly		
3047167	ATP-UT	Partition plate, Length: 50 mm, Width: 2 mm, Height: 48 mm, Color: gray
3022276	CLIPFIX 35-5	Snap-on end bracket, for NS 35/7.5 or NS 35/15 DIN rail, can be fitted with Zack strip ZB 5 and ZBF 5, terminal strip marker KLM 2 and KLM, parking facility for FBS...5, FBS...6, KSS 5, KSS 6, width: 5,15 mm, color: gray
3047154	D-UT 2,5/1P	End cover, Length: 47.6 mm, Width: 2.2 mm, Height: 48.4 mm, Color: gray
0801762	NS 35/ 7,5 CU UNPERF 2000MM	DIN rail, material: Copper, unperforated, height 7.5 mm, width 35 mm, length: 2 m
1207640	NS 35/ 7,5 PERF 755MM	NS 35 DIN rail, height 7.5 mm, length 755 mm
1207653	NS 35/ 7,5 PERF 955MM	NS35 DIN rail, height 7.5 mm, length 955 mm
1207666	NS 35/ 7,5 PERF 1155MM	NS 35 DIN rail, height 7.5 mm, length 1155 mm
0801733	NS 35/ 7,5 PERF 2000MM	DIN rail, material: Steel, galvanized and passivated with a thick layer, perforated, height 7.5 mm, width 35 mm, length: 2 m
0801681	NS 35/ 7,5 UNPERF 2000MM	DIN rail, material: Steel, unperforated, height 7.5 mm, width 35 mm, length: 2 m
1201756	NS 35/15 AL UNPERF 2000MM	DIN rail, deep-drawn, high profile, unperforated, 1.5 mm thick, material: Aluminum, height 15 mm, width 35 mm, length 2 m
1201895	NS 35/15 CU UNPERF 2000MM	DIN rail, material: Copper, unperforated, 1.5 mm thick, height 15 mm, width 35 mm, length: 2 m
1207679	NS 35/15 PERF 755MM	NS 35 DIN rail, perforated, height 15 mm, length 755 mm
1207682	NS 35/15 PERF 955MM	NS 35 DIN rail, perforated, height 15 mm, length 955 mm
1207695	NS 35/15 PERF 1155MM	NS 35 DIN rail, perforated, height 15 mm, length 1155 mm
1201730	NS 35/15 PERF 2000MM	DIN rail, material: Steel, perforated, height 15 mm, width 35 mm, length: 2 m
1201714	NS 35/15 UNPERF 2000MM	DIN rail, material: Steel, unperforated, height 15 mm, width 35 mm, length: 2 m
1201798	NS 35/15-2,3 UNPERF 2000MM	DIN rail, material: Steel, unperforated, 2.3 mm thick, height 15 mm, width 35 mm, length: 2 m
Bridges		
3030161	FBS 2-5	Plug-in bridge, Number of positions: 2, Color: red
3030174	FBS 3-5	Plug-in bridge, Number of positions: 3, Color: red
3030187	FBS 4-5	Plug-in bridge, Number of positions: 4, Color: red
3030190	FBS 5-5	Plug-in bridge, Number of positions: 5, Color: red
3030213	FBS 10-5	Plug-in bridge, Number of positions: 10, Color: red

3030226	FBS 20-5	Plug-in bridge, Number of positions: 20, Color: red
3038930	FBS 50-5	Plug-in bridge, Number of positions: 50, Color: red
3047060	RB UT 10-(2,5/4)	Reducing bridge, Number of positions: 2, Color: red

General

3060445	UT 2,5/1P-F	Screw flange, for screwing COMBI plugs, with the same structure and pitch as the relevant COMBI terminal blocks
---------	-------------	---

Marking

3040588	PC	Keying star, Length: 3 mm, Width: 3 mm, Height: 6 mm, Color: red
0811228	X-PEN 0,35	Marker pen without ink cartridge, for manual labeling of markers, labeling extremely wipe-proof, line thickness 0.35 mm
1050017	ZB 5,LGS:FORTL.ZAHLEN	Zack marker strip, 10-section, printed horizontally: with the numbers 1 - 10, 11 - 20 and so on up to 491 - 500, color: white
5060906	ZB 5/WH-100:UNBEDRUCKT	Zack strip, unprinted: 10-section, for individual labeling with M-PEN, ZB-T or CMS system, large batch, sufficient for labeling 1000 terminal blocks, for a terminal width of 5.2 mm, color: White
1050295	ZB 5:SO/CMS	Zack strip, 10-section, divisible, special printing, marking according to customer requirements

Plug/Adapter

0201689	MPS-IH BU	Insulating sleeve, Color: blue
0201676	MPS-IH RD	Insulating sleeve, Color: red
0201663	MPS-IH WH	Insulating sleeve, Color: white
0201744	MPS-MT	Test plugs
3030925	PAI-4	Test adapter, Color: gray
3030983	PS-5	Test adapter, Color: red

Tools

1205053	SZS 0,6X3,5	Actuation tool, for ST terminal blocks, insulated, also suitable for use as a bladed screwdriver, size: 0.6 x 3.5 x 100 mm, 2-component grip, with non-slip grip
---------	-------------	--

Additional products

Item	Designation	Description
Plug/Adapter		
3040258	SP 2,5/ 1	Connectors, Type of connection: Spring-cage connection, Number of positions: 1, Cross section: 0.08 mm ² - 4 mm ² , AWG 28 - 12, Width: 5.2 mm, Height: 39 mm, Color: gray

3040698	SP 2,5/ 1 BU	Connectors, Type of connection: Spring-cage connection, Number of positions: 1, Cross section: 0.08 mm ² - 4 mm ² , AWG 28 - 12, Width: 5.2 mm, Height: 39 mm, Color: blue
3040708	SP 2,5/ 1 GNYE	Connectors, Type of connection: Spring-cage connection, Number of positions: 1, Cross section: 0.08 mm ² - 4 mm ² , AWG 28 - 12, Width: 5.2 mm, Height: 39 mm, Color: green-yellow
3040261	SP 2,5/ 2	Connectors, Type of connection: Spring-cage connection, Number of positions: 2, Cross section: 0.08 mm ² - 4 mm ² , AWG 28 - 12, Width: 10.4 mm, Height: 39 mm, Color: gray
3040274	SP 2,5/ 3	Connectors, Type of connection: Spring-cage connection, Number of positions: 3, Cross section: 0.08 mm ² - 4 mm ² , AWG 28 - 12, Width: 15.6 mm, Height: 39 mm, Color: gray
3040287	SP 2,5/ 4	Connectors, Type of connection: Spring-cage connection, Number of positions: 4, Cross section: 0.08 mm ² - 4 mm ² , AWG 28 - 12, Width: 20.8 mm, Height: 39 mm, Color: gray
3040290	SP 2,5/ 5	Connectors, Type of connection: Spring-cage connection, Number of positions: 5, Cross section: 0.08 mm ² - 4 mm ² , AWG 28 - 12, Width: 26 mm, Height: 39 mm, Color: gray
3040300	SP 2,5/ 6	Connectors, Type of connection: Spring-cage connection, Number of positions: 6, Cross section: 0.08 mm ² - 4 mm ² , AWG 28 - 12, Width: 31.2 mm, Height: 39 mm, Color: gray
3040313	SP 2,5/ 7	Connectors, Type of connection: Spring-cage connection, Number of positions: 7, Cross section: 0.08 mm ² - 4 mm ² , AWG 28 - 12, Width: 36.4 mm, Height: 39 mm, Color: gray
3040326	SP 2,5/ 8	Connectors, Type of connection: Spring-cage connection, Number of positions: 8, Cross section: 0.08 mm ² - 4 mm ² , AWG 28 - 12, Width: 41.6 mm, Height: 39 mm, Color: gray
3040339	SP 2,5/ 9	Connectors, Type of connection: Spring-cage connection, Number of positions: 9, Cross section: 0.08 mm ² - 4 mm ² , AWG 28 - 12, Width: 46.8 mm, Height: 39 mm, Color: gray
3040342	SP 2,5/10	Connectors, Type of connection: Spring-cage connection, Number of positions: 10, Cross section: 0.08 mm ² - 4 mm ² , AWG 28 - 12, Width: 52 mm, Height: 39 mm, Color: gray
3040355	SP 2,5/11	Connectors, Type of connection: Spring-cage connection, Number of positions: 11, Cross section: 0.08 mm ² - 4 mm ² , AWG 28 - 12, Width: 57.2 mm, Height: 39 mm, Color: gray
3040368	SP 2,5/12	Connectors, Type of connection: Spring-cage connection, Number of positions: 12, Cross section: 0.08 mm ² - 4 mm ² , AWG 28 - 12, Width: 62.4 mm, Height: 39 mm, Color: gray
3040371	SP 2,5/13	Connectors, Type of connection: Spring-cage connection, Number of positions: 13, Cross section: 0.08 mm ² - 4 mm ² , AWG 28 - 12, Width: 67.6 mm, Height: 39 mm, Color: gray
3040384	SP 2,5/14	Connectors, Type of connection: Spring-cage connection, Number of positions: 14, Cross section: 0.08 mm ² - 4 mm ² , AWG 28 - 12, Width: 72.8 mm, Height: 39 mm, Color: gray
3040397	SP 2,5/15	Connectors, Type of connection: Spring-cage connection, Number of positions: 15, Cross section: 0.08 mm ² - 4 mm ² , AWG 28 - 12, Width: 78 mm, Height: 39 mm, Color: gray

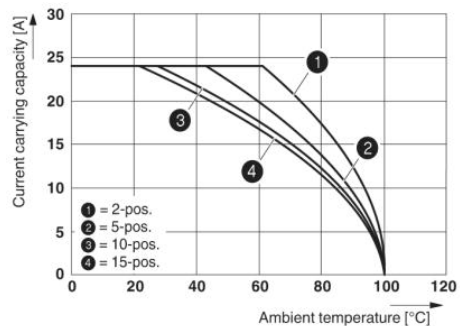
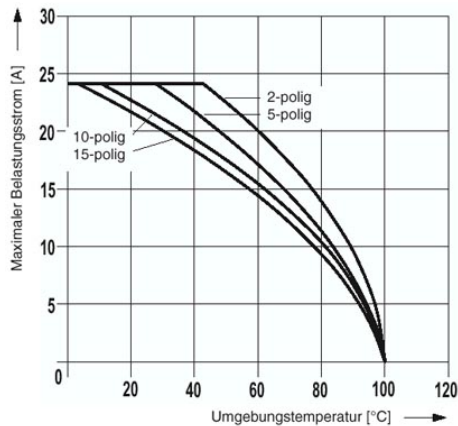
3040106	SPB 2,5/ 1	Connectors, Type of connection: Spring-cage connection, Number of positions: 1, Cross section: 0.08 mm ² - 4 mm ² , AWG 28 - 12, Width: 5.2 mm, Height: 39 mm, Color: gray
3040724	SPB 2,5/ 1 BU	Connectors, Type of connection: Spring-cage connection, Number of positions: 1, Cross section: 0.08 mm ² - 4 mm ² , AWG 28 - 12, Width: 5.2 mm, Height: 39 mm, Color: blue
3040711	SPB 2,5/ 1 GNYE	Connectors, Type of connection: Spring-cage connection, Number of positions: 1, Cross section: 0.08 mm ² - 4 mm ² , AWG 28 - 12, Width: 5.2 mm, Height: 39 mm, Color: green-yellow
3040119	SPB 2,5/ 2	Connectors, Type of connection: Spring-cage connection, Number of positions: 2, Cross section: 0.08 mm ² - 4 mm ² , AWG 28 - 12, Width: 10.4 mm, Height: 39 mm, Color: gray
3040122	SPB 2,5/ 3	Connectors, Type of connection: Spring-cage connection, Number of positions: 3, Cross section: 0.08 mm ² - 4 mm ² , AWG 28 - 12, Width: 15.6 mm, Height: 39 mm, Color: gray
3040135	SPB 2,5/ 4	Connectors, Type of connection: Spring-cage connection, Number of positions: 4, Cross section: 0.08 mm ² - 4 mm ² , AWG 28 - 12, Width: 20.8 mm, Height: 39 mm, Color: gray
3040143	SPB 2,5/ 5	Connectors, Type of connection: Spring-cage connection, Number of positions: 5, Cross section: 0.08 mm ² - 4 mm ² , AWG 28 - 12, Width: 26 mm, Height: 39 mm, Color: gray
3040151	SPB 2,5/ 6	Connectors, Type of connection: Spring-cage connection, Number of positions: 6, Cross section: 0.08 mm ² - 4 mm ² , AWG 28 - 12, Width: 31.2 mm, Height: 39 mm, Color: gray
3040164	SPB 2,5/ 7	Connectors, Type of connection: Spring-cage connection, Number of positions: 7, Cross section: 0.08 mm ² - 4 mm ² , AWG 28 - 12, Width: 36.4 mm, Height: 39 mm, Color: gray
3040177	SPB 2,5/ 8	Connectors, Type of connection: Spring-cage connection, Number of positions: 8, Cross section: 0.08 mm ² - 4 mm ² , AWG 28 - 12, Width: 41.6 mm, Height: 39 mm, Color: gray
3040180	SPB 2,5/ 9	Connectors, Type of connection: Spring-cage connection, Number of positions: 9, Cross section: 0.08 mm ² - 4 mm ² , AWG 28 - 12, Width: 46.8 mm, Height: 39 mm, Color: gray
3040193	SPB 2,5/10	Connectors, Type of connection: Spring-cage connection, Number of positions: 10, Cross section: 0.08 mm ² - 4 mm ² , AWG 28 - 12, Width: 52 mm, Height: 39 mm, Color: gray
3040203	SPB 2,5/11	Connectors, Type of connection: Spring-cage connection, Number of positions: 11, Cross section: 0.08 mm ² - 4 mm ² , AWG 28 - 12, Width: 57.2 mm, Height: 39 mm, Color: gray
3040216	SPB 2,5/12	Connectors, Type of connection: Spring-cage connection, Number of positions: 12, Cross section: 0.08 mm ² - 4 mm ² , AWG 28 - 12, Width: 62.4 mm, Height: 39 mm, Color: gray
3040229	SPB 2,5/13	Connectors, Type of connection: Spring-cage connection, Number of positions: 13, Cross section: 0.08 mm ² - 4 mm ² , AWG 28 - 12, Width: 67.6 mm, Height: 39 mm, Color: gray
3040232	SPB 2,5/14	Connectors, Type of connection: Spring-cage connection, Number of positions: 14, Cross section: 0.08 mm ² - 4 mm ² , AWG 28 - 12, Width: 72.8 mm, Height: 39 mm, Color: gray

3040245	SPB 2,5/15	Connectors, Type of connection: Spring-cage connection, Number of positions: 15, Cross section: 0.08 mm ² - 4 mm ² , AWG 28 - 12, Width: 78 mm, Height: 39 mm, Color: gray
3045145	UPBV 2,5/ 1	Connectors, Type of connection: Screw connection, Screw connection, Number of positions: 1, Cross section: 0.14 mm ² - 4 mm ² , AWG 26 - 12, Width: 5.2 mm, Height: 47 mm, Color: gray
3045240	UPBV 2,5/ 1 BU	Connectors, Type of connection: Screw connection, Screw connection, Number of positions: 1, Cross section: 0.14 mm ² - 4 mm ² , AWG 26 - 12, Width: 5.2 mm, Height: 47 mm, Color: blue
3045253	UPBV 2,5/ 1 GNYE	Connectors, Type of connection: Screw connection, Screw connection, Number of positions: 1, Cross section: 0.14 mm ² - 4 mm ² , AWG 26 - 12, Width: 5.2 mm, Height: 47 mm, Color: green-yellow
3045318	UPBV 2,5/ 1-L	Connectors, Type of connection: Screw connection, Screw connection, Number of positions: 1, Cross section: 0.14 mm ² - 4 mm ² , AWG 26 - 12, Width: 5.2 mm, Height: 47 mm, Color: gray
3045321	UPBV 2,5/ 1-L BU	Connectors, Type of connection: Screw connection, Screw connection, Number of positions: 1, Cross section: 0.14 mm ² - 4 mm ² , AWG 26 - 12, Width: 5.2 mm, Height: 47 mm, Color: blue
3045334	UPBV 2,5/ 1-L GNYE	Connectors, Type of connection: Screw connection, Screw connection, Number of positions: 1, Cross section: 0.14 mm ² - 4 mm ² , AWG 26 - 12, Width: 5.2 mm, Height: 47 mm, Color: green-yellow
3045347	UPBV 2,5/ 1-M	Connectors, Type of connection: Screw connection, Screw connection, Number of positions: 1, Cross section: 0.14 mm ² - 4 mm ² , AWG 26 - 12, Width: 5.2 mm, Height: 47 mm, Color: gray
3045350	UPBV 2,5/ 1-M BU	Connectors, Type of connection: Screw connection, Screw connection, Number of positions: 1, Cross section: 0.14 mm ² - 4 mm ² , AWG 26 - 12, Width: 5.2 mm, Height: 47 mm, Color: blue
3045363	UPBV 2,5/ 1-M GNYE	Connectors, Type of connection: Screw connection, Screw connection, Number of positions: 1, Cross section: 0.14 mm ² - 4 mm ² , AWG 26 - 12, Width: 5.2 mm, Height: 47 mm, Color: green-yellow
3045376	UPBV 2,5/ 1-R	Connectors, Type of connection: Screw connection, Screw connection, Number of positions: 1, Cross section: 0.14 mm ² - 4 mm ² , AWG 26 - 12, Width: 5.2 mm, Height: 47 mm, Color: gray
3045389	UPBV 2,5/ 1-R BU	Connectors, Type of connection: Screw connection, Screw connection, Number of positions: 1, Cross section: 0.14 mm ² - 4 mm ² , AWG 26 - 12, Width: 5.2 mm, Height: 47 mm, Color: blue
3045392	UPBV 2,5/ 1-R GNYE	Connectors, Type of connection: Screw connection, Screw connection, Number of positions: 1, Cross section: 0.14 mm ² - 4 mm ² , AWG 26 - 12, Width: 5.2 mm, Height: 47 mm, Color: green-yellow
3045402	UPBV 2,5/ 2	Connectors, Type of connection: Screw connection, Screw connection, Number of positions: 2, Cross section: 0.14 mm ² - 4 mm ² , AWG 26 - 12, Width: 10.4 mm, Height: 47 mm, Color: gray

3045415	UPBV 2,5/ 3	Connectors, Type of connection: Screw connection, Screw connection, Number of positions: 3, Cross section: 0.14 mm ² - 4 mm ² , AWG 26 - 12, Width: 15.6 mm, Height: 47 mm, Color: gray
3045428	UPBV 2,5/ 4	Connectors, Type of connection: Screw connection, Screw connection, Number of positions: 4, Cross section: 0.14 mm ² - 4 mm ² , AWG 26 - 12, Width: 20.8 mm, Height: 47 mm, Color: gray
3045431	UPBV 2,5/ 5	Connectors, Type of connection: Screw connection, Screw connection, Number of positions: 5, Cross section: 0.14 mm ² - 4 mm ² , AWG 26 - 12, Width: 26 mm, Height: 47 mm, Color: gray
3045444	UPBV 2,5/ 6	Connectors, Type of connection: Screw connection, Screw connection, Number of positions: 6, Cross section: 0.14 mm ² - 4 mm ² , AWG 26 - 12, Width: 31.2 mm, Height: 47 mm, Color: gray
3045457	UPBV 2,5/ 7	Connectors, Type of connection: Screw connection, Screw connection, Number of positions: 7, Cross section: 0.14 mm ² - 4 mm ² , AWG 26 - 12, Width: 36.4 mm, Height: 47 mm, Color: gray
3045460	UPBV 2,5/ 8	Connectors, Type of connection: Screw connection, Screw connection, Number of positions: 8, Cross section: 0.14 mm ² - 4 mm ² , AWG 26 - 12, Width: 41.6 mm, Height: 47 mm, Color: gray
3045473	UPBV 2,5/ 9	Connectors, Type of connection: Screw connection, Screw connection, Number of positions: 9, Cross section: 0.14 mm ² - 4 mm ² , AWG 26 - 12, Width: 46.8 mm, Height: 47 mm, Color: gray
3045499	UPBV 2,5/10	Connectors, Type of connection: Screw connection, Screw connection, Number of positions: 10, Cross section: 0.14 mm ² - 4 mm ² , AWG 26 - 12, Width: 52 mm, Height: 47 mm, Color: gray
3045509	UPBV 2,5/11	Connectors, Type of connection: Screw connection, Screw connection, Number of positions: 11, Cross section: 0.14 mm ² - 4 mm ² , AWG 26 - 12, Width: 57.2 mm, Height: 47 mm, Color: gray
3045512	UPBV 2,5/12	Connectors, Type of connection: Screw connection, Screw connection, Number of positions: 12, Cross section: 0.14 mm ² - 4 mm ² , AWG 26 - 12, Width: 62.4 mm, Height: 47 mm, Color: gray
3045525	UPBV 2,5/13	Connectors, Type of connection: Screw connection, Screw connection, Number of positions: 13, Cross section: 0.14 mm ² - 4 mm ² , AWG 26 - 12, Width: 67.6 mm, Height: 47 mm, Color: gray
3045538	UPBV 2,5/14	Connectors, Type of connection: Screw connection, Screw connection, Number of positions: 14, Cross section: 0.14 mm ² - 4 mm ² , AWG 26 - 12, Width: 72.8 mm, Height: 47 mm, Color: gray
3045541	UPBV 2,5/15	Connectors, Type of connection: Screw connection, Screw connection, Number of positions: 15, Cross section: 0.14 mm ² - 4 mm ² , AWG 26 - 12, Width: 78 mm, Height: 47 mm, Color: gray

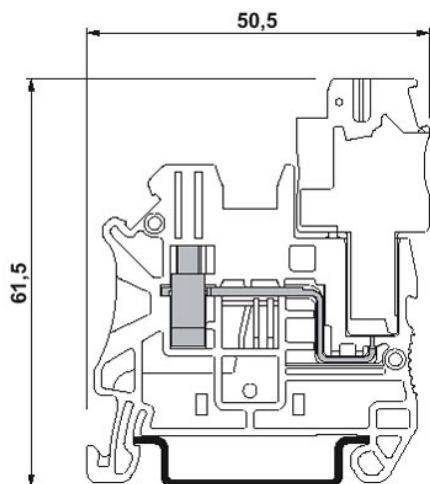
Diagrams/Drawings

Diagram



The figure shows the derating curve of the UT 2,5/1P... terminal block in connection with the UPBV 2,5 connector

Dimensioned drawing



Circuit diagram



Address

PHOENIX CONTACT Inc., USA
586 Fulling Mill Road
Middletown, PA 17057, USA
Phone (800) 888-7388
Fax (717) 944-1625
<http://www.phoenixcon.com>



© 2010 Phoenix Contact
Technical modifications reserved;