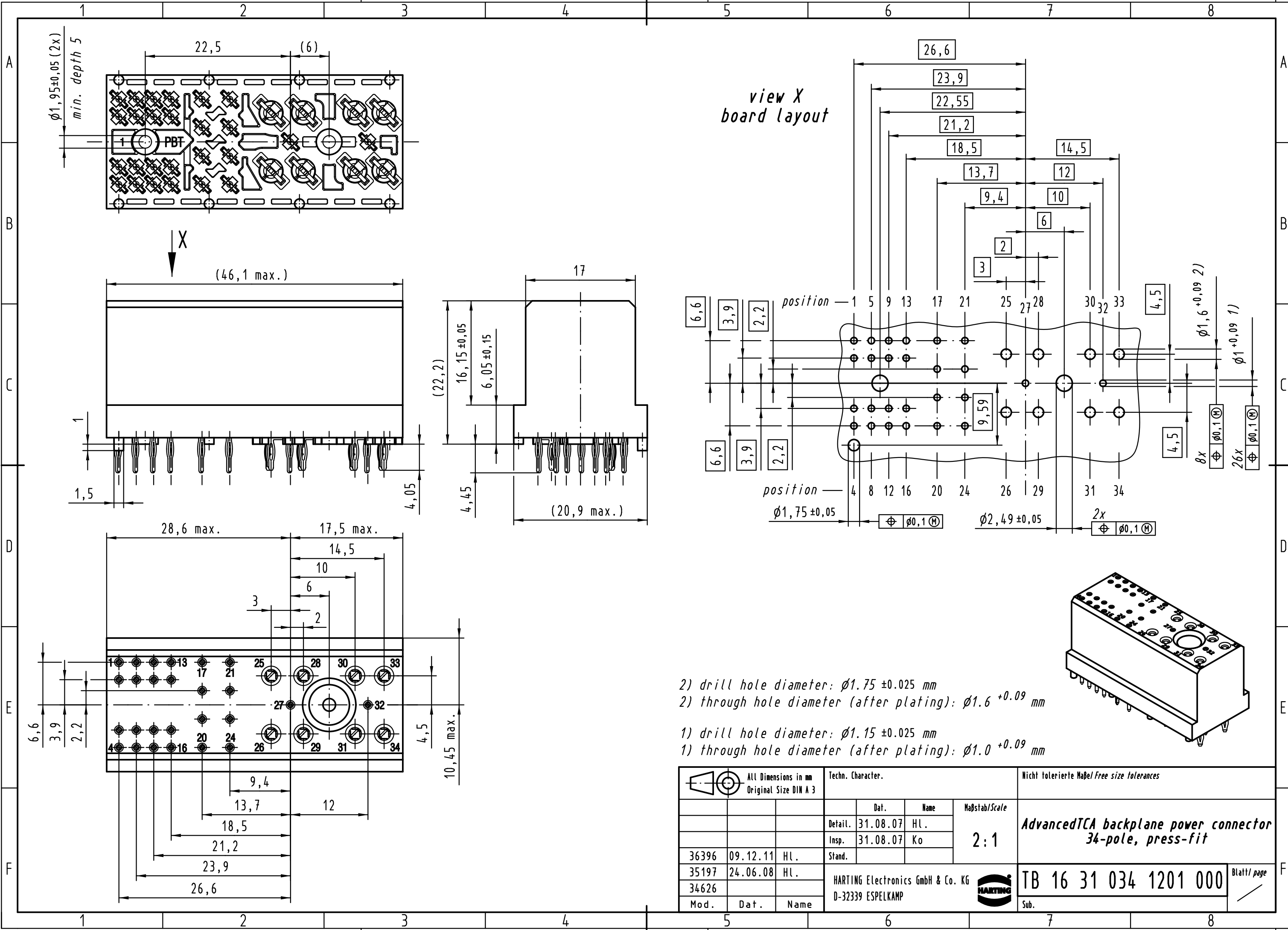
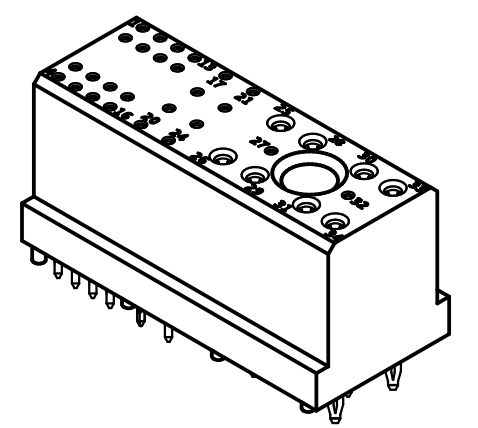


Alle Rechte vorbehalten/ All rights reserved



- 2) drill hole diameter: $\phi 1.75 \pm 0.025 \text{ mm}$
- 2) through hole diameter (after plating): $\phi 1.6^{+0.09} \text{ mm}$
- 1) drill hole diameter: $\phi 1.15 \pm 0.025 \text{ mm}$
- 1) through hole diameter (after plating): $\phi 1.0^{+0.09} \text{ mm}$



All Dimensions in mm Original Size DIN A 3		Techn. Character.			Nicht tolerierte Maß/Free size tolerances	
			Dat.	Name	Maßstab/Scale	AdvancedTCA backplane power connector 34-pole, press-fit
			Detail.	31.08.07 HL.		
			Insp.	31.08.07 Ko	2:1	
			Stand.			
36396	09.12.11	HL.	HARTING Electronics GmbH & Co. KG			TB 16 31 034 1201 000
35197	24.06.08	HL.	D-32339 ESPELKAMP			
34626						
Mod.	Dat.	Name				Blatt/ page
						Sub.