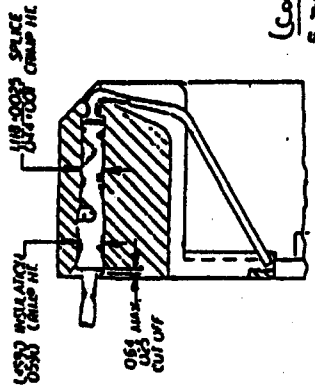
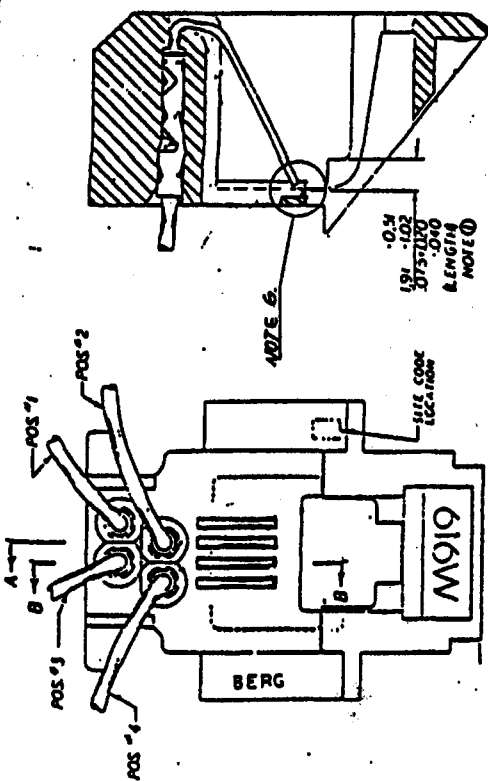
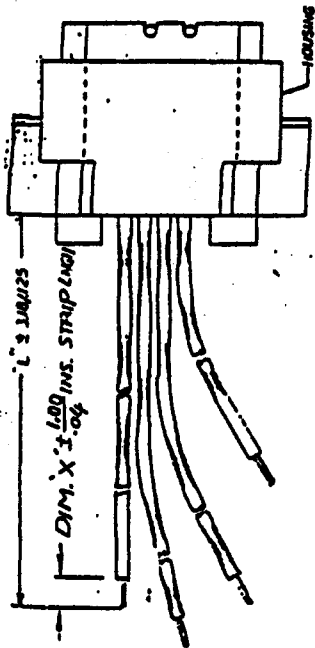


Product no  
SEE CHART



FORWARDED SECTION B-B



SECTION A-A

- (CONTINUED NOTES)
- INSULATED WIRE: UNLESS OTHERWISE NOTED (SEE TABLE), USE UL 1061 PAW 27, 7 STRANDED OF Tinned COPPER WIRE, P.U.C. ISOLATION, DUPONT #1401.
  - TID-20FC04709: 301025-200, TYPE B WITH THE TID-20FC04709-200, TYPE A 6. TEST METHOD PER UL-7263, SEC. 2.2.2.
  - NOTES:
    - FOR VISUAL MECHANICAL AND FUNCTIONAL REQUIREMENTS SEE SPECIFICATION M919-2.
    - USA MATL: ABS INCLUDING COMPOND, FLAME RETARDANT PER UL-94 V-0, CALIF. SEE TABLE.
    - TEAR MATL: 3/4 MARO BRASS ALLOY, UNS-C26000, PREPARED - see 1/2003 TOLLER 18 UN-PLATED, SEE TABLE.
    - COND WIRE MATL: plus Shield ALLOY, UNS-C5000, 136 TO 150 TH P.S.Z. TESTABLE. SEE TABLE FOR INSULATION THICKNESS. (TO BE CONTINUED)

FCI		CUSTOMER COPY		616W SPADELESS MOD JACK	
MATERIAL CODE		MATERIAL CODE		MATERIAL CODE	
BY	DATE	BY	DATE	BY	DATE
A	02/10/01	A	02/10/01	A	02/10/01
B	02/10/01	B	02/10/01	B	02/10/01
C	02/10/01	C	02/10/01	C	02/10/01
D	02/10/01	D	02/10/01	D	02/10/01
E	02/10/01	E	02/10/01	E	02/10/01
F	02/10/01	F	02/10/01	F	02/10/01
G	02/10/01	G	02/10/01	G	02/10/01
sheet index		sheet index		sheet index	
H	1	A	2	A	3
I	4	A	5	A	6
J	7	A	8	A	9
revision		revision		revision	
H		A		A	
1		2		3	
4		5		6	
7		8		9	
10		11		12	
13		14		15	
16		17		18	
19		20		21	
22		23		24	
25		26		27	
28		29		30	
31		32		33	
34		35		36	
37		38		39	
40		41		42	
43		44		45	
46		47		48	
49		50		51	
52		53		54	
55		56		57	
58		59		60	
61		62		63	
64		65		66	
67		68		69	
70		71		72	
73		74		75	
76		77		78	
79		80		81	
82		83		84	
85		86		87	
88		89		90	
91		92		93	
94		95		96	
97		98		99	
100		101		102	
103		104		105	
106		107		108	
109		110		111	
112		113		114	
115		116		117	
118		119		120	
121		122		123	
124		125		126	
127		128		129	
130		131		132	
133		134		135	
136		137		138	
139		140		141	
142		143		144	
145		146		147	
148		149		150	
151		152		153	
154		155		156	
157		158		159	
160		161		162	
163		164		165	
166		167		168	
169		170		171	
172		173		174	
175		176		177	
178		179		180	
181		182		183	
184		185		186	
187		188		189	
190		191		192	
193		194		195	
196		197		198	
199		200		201	
202		203		204	
205		206		207	
208		209		210	
211		212		213	
214		215		216	
217		218		219	
220		221		222	
223		224		225	
226		227		228	
229		230		231	
232		233		234	
235		236		237	
238		239		240	
241		242		243	
244		245		246	
247		248		249	
250		251		252	
253		254		255	
256		257		258	
259		260		261	
262		263		264	
265		266		267	
268		269		270	
271		272		273	
274		275		276	
277		278		279	
280		281		282	
283		284		285	
286		287		288	
289		290		291	
292		293		294	
295		296		297	
298		299		300	
301		302		303	
304		305		306	
307		308		309	
310		311		312	
313		314		315	
316		317		318	
319		320		321	
322		323		324	
325		326		327	
328		329		330	
331		332		333	
334		335		336	
337		338		339	
340		341		342	
343		344		345	
346		347		348	
349		350		351	
352		353		354	
355		356		357	
358		359		360	
361		362		363	
364		365		366	
367		368		369	
370		371		372	
373		374		375	
376		377		378	
379		380		381	
382		383		384	
385		386		387	
388		389		390	
391		392		393	
394		395		396	
397		398		399	
400		401		402	
403		404		405	
406		407		408	
409		410		411	
412		413		414	
415		416		417	
418		419		420	
421		422		423	
424		425		426	
427		428		429	
430		431		432	
433		434		435	
436		437		438	
439		440		441	
442		443		444	
445		446		447	
448		449		450	
451		452		453	
454		455		456	
457		458		459	
460		461		462	
463		464		465	
466		467		468	
469		470		471	
472		473		474	
475		476		477	
478		479		480	
481		482		483	
484		485		486	
487		488		489	
490		491		492	
493		494		495	
496		497		498	
499		500		501	
502		503		504	
505		506		507	
508		509		510	
511		512		513	
514		515		516	
517		518		519	
520		521		522	
523		524		525	
526		527		528	
529		530		531	
532		533		534	
535		536		537	
538		539		540	
541		542		543	
544		545		546	
547		548		549	
550		551		552	
553		554		555	
556		557		558	
559		560		561	
562		563		564	
565		566		567	
568		569		570	
571		572		573	
574		575		576	
577		578		579	
580		581		582	
583		584		585	
586		587		588	
589		590		591	
592		593		594	
595		596		597	
598		599		600	
601		602		603	
604		605		606	
607		608		609	
610		611		612	
613		614		615	
616		617		618	
619		620		621	
622		623		624	
625		626		627	
628		629		630	
631		632		633	
634		635		636	
637		638		639	
640		641		642	
643		644		645	
646		647		648	
649		650		651	
652		653		654	
655		656		657	
658		659		660	
661		662		663	
664		665		666	
667		668		669	
670		671		672	
673		674		675	
676		677		678	
679		680		681	
682		683		684	
685		686		687	
688		689		690	
691		692		693	
694		695		696	
697		698		699	
700		701		702	
703		704		705	
706		707		708	
709		710		711	
712		713		714	
715		716		717	
718		719		720	
721		722		723	
724		725		726	
727		728		729	
730		731		732	
733		734		735	
736		737		738	
739		740		741	
742		743		744	
745		746		747	
748		749		750	
751		752		753	
754					



PRODUCT NO <b>68974</b>		REVISIONS	
REV	DESCRIPTION	BY	DATE
A			

PRODUCT NO	POS. NO.	COLOR	LEAD LNTH DIM. "L"	FINISI. ON END OF WIRE	INS. STRIP DIM. X	INS. WIRE NO	(NOTE 5)	(NOTE 2)	(NOTE 3)	(NOTE 4)
68974-007	1	RED	82.55/3.25	CUT & STRIP	3.00/.12	301025-003		HOUSING	TERMINAL	GOLD WIRE
	2	WHITE	234.95/9.25			-004		PLATING		PLATING
	3	GREEN	234.95/9.25			-005		65883-005	Non-Plated	0.75µm/30µ"
	4	BLACK	82.55/3.25	CUT & STRIP	3.00/.12	301025-002		L/GRAY		
68974-008 <del>154-11327</del> <del>154-11328</del>	1	RED	53.00/2.09	CUT & STRIP	6.00/.24	301025-003		SK11521-001	Plated	0.75µm/30µ"
	2	WHITE	203.00/7.99			-004		Beige		
	3	GREEN	203.00/7.99			-005				
	4	BLACK	53.00/2.09	CUT & STRIP	6.00/.24	301025-002				
68974-009	1	RED	85.60/3.37	CUT & STRIP	4.30/.17	301025-003				
	2	WHITE	218.95/8.62			-004		65883-005		1.27µm/50µ"
	3	GREEN	218.95/8.62			-005		L/GRAY		
	4	BLACK	85.60/3.37	CUT & STRIP	4.30/.17	301025-002				
68974-010	1	RED	82.60/3.25	CUT & STRIP	5.08/.20	301025-003				
	2	WHITE	177.80/7.00			-004		65883-005		0.75µm/30µ"
	3	GREEN	177.80/7.00			-005		L/GRAY		
	4	BLACK	82.60/3.25	CUT & STRIP	5.08/.20	301025-002				
68974-011	1	RED	82.60/3.25	CUT & STRIP	5.08/.20	301025-003				
	2	BLACK	127.00/5.00			-002		65883-005		0.75µm/30µ"
	3	WHITE	127.00/5.00			-004		L/GRAY		
	4	GREEN	82.60/3.25	CUT & STRIP	5.08/.20	301025-005				
68974-012	1	RED	82.60/3.25	CUT & STRIP	5.08/.20	301025-003				
	2	WHITE	234.95/9.25			-004		65883-005	Plated	1.27µm/50µ"
	3	GREEN	234.95/9.25			-005		L/GRAY		
	4	BLACK	82.60/3.25	CUT & STRIP	5.08/.20	301025-002				

CUSTOMER COPY		DATE	
MAIL	DATE	MAIL	DATE
DR	INCH	DR	INCH
CK'D	DO	CK'D	DO
ENGR	COOT DOG	ENGR	COOT DOG
APP'D		APP'D	
TOLERANCES UNLESS OTHERWISE INDICATED		TOLERANCES UNLESS OTHERWISE INDICATED	
LINEAR	RADI	LINEAR	RADI
ANGLES	ANGLES	ANGLES	ANGLES
DO NOT SCALE DRAWING		DO NOT SCALE DRAWING	
IMPROVABLE PROTECTION		IMPROVABLE PROTECTION	
INCH		INCH	
MM		MM	
NEXT ASSY USED ON		NEXT ASSY USED ON	
APPLICATION		APPLICATION	
TITLE 616W SPADELESS M/J ASSY		TITLE 616W SPADELESS M/J ASSY	
SCALE SIZE DWG NO		SCALE SIZE DWG NO	
B 68974		B 68974	
SHEET 3 OF		SHEET 3 OF	



RESTRICTED TO AP  
 EFFECT CHANGING  
 DRAWING  
 CIP. E. CLASSY  
 CM. E. LPTUCHING  
 CDON. C. EP. C.  
 CTODLG. CUST.  
 CO. C. CMHR.  
 CINS. P. MUPRES.  
 CD. SUS. QUANTAL AND  
 CINS. P. MUPRES.  
 ISSUE DATE: 1/23/88

PRODUCT NO  
 68974

PRODUCT NO	POS. NO.	COLOR	LEAD LGTH DIM. "L"	FINISH ON END OF WIRE	STRIP DIM. X	INS. NO	(NOTE 5) INS. NO	HOUSING P/S & COLOR	(NOTE 3) TERMINAL PLATING	(NOTE 4) GOLD WIRE PLATING	REVISIONS	
											REV	DESCRIPTION
68974-013 <i>HS4 1/2 68974</i>	1	RED	53.00/2.09	CUT & STRIP	6.00/.24	301025-003						
	2	WHITE	203.00/7.99			-004		SK11521	PLATED	0.75µm/30µ"		
	3	GREEN	203.00/7.99			-005						
	4	BLACK	53.00/2.09	CUT & STRIP	6.00/.24	301025-002		BLACK				
68974-014	1	RED	82.55/3.25	CUT & STRIP	4.00/.16	301025-003						
	2	WHITE	234.95/9.25			-004				"SXT"		
	3	GREEN	234.95/9.25			-005		65883-005		0.75µm/30µ"		
	4	BLACK	82.55/3.25	CUT & STRIP	4.00/.16	301025-002		L/GRAY				
68974-015	1	RED	85.00/3.35	CUT & STRIP	10.00/.39	SK8241-003						
	2	WHITE	195.00/7.68			-004						
	3	GREEN	195.00/7.68			-005		65883-005	PLATED	0.375µm/15µ"		
	4	BLACK	85.00/3.35	CUT & STRIP	10.00/.39	SK8241-002		L/GRAY				
68974-016	1	RED	80.00/3.15	CUT & STRIP	10.00/.39	301025-003						
	2	WHITE				-004		65883-005	Non-Plated	0.75µm/30µ"		
	3	GREEN				-005						
	4	BLACK	80.00/3.15	CUT & STRIP	10.00/.39	30.025-002		L/GRAY				
68974-017	1	RED	50.00/1.97	CUT & STRIP	3.00/.12	SK15149-003						
	2	WHITE	200.00/7.87			-004		SK11521				
	3	GREEN	200.00/7.87			-005						
	4	BLACK	50.00/1.97	CUT & STRIP	3.00/.12	SK15149-002		BLACK	Non-Plated			
68974-018	1	RED	85.60/3.37	CUT & STRIP	4.30/.17	301025-003						
	2	WHITE	218.95/8.62			-004						
	3	GREEN	218.95/8.62			-005		65883-005	PLATED	0.75µm/30µ"		
	4	BLACK	85.60/3.37	CUT & STRIP	4.30/.17	301025-002		L/GRAY				

CUSTOMER COPY		DATE		MATERIAL	
TITLE		SCALE		SIZE	
616W SPADELESS M/J ASSY		1/8" = 1"		M/J ASSY	
68974		SMT 4			



THIS IS THE PROPERTY OF AND UNLESS OTHERWISE SPECIFIED BY THE DESIGN ENGINEER, IT IS TO BE KEPT IN CONFIDENCE AND NOT TO BE REPRODUCED OR TRANSMITTED IN ANY FORM OR BY ANY MEANS, ELECTRONIC OR MECHANICAL, INCLUDING PHOTOCOPYING, RECORDING, OR BY ANY INFORMATION STORAGE AND RETRIEVAL SYSTEM.

		REVISIONS											
		REV	DESCRIPTION	BY	DATE								
		B	ECRT10007	JACOB	910107								
PRODUCT NO.	WIRE NO.	WIRE COLOR	DIM. 'L' (MM)	INS. WIRE STYLE (NOTE 5)	HOUSING P/N,COLOR (NOTE 2)	HOUSING COLOR	SPLICE FINISH (NOTE 3)	SPRING CONTACT PLATING (NOTE 4)	DIM. 'X' (MM)	FINISH ON WIRE END			
68974-022	1	RED	48.0/1.89	301025-XXX	65883-005	LIGHT GRAY	UNPLATED	30U"AU	3.0/0.12	CUT & STRIP			
	2	WHITE											
	3	GREEN											
	4	BLACK	48.0/1.89						3.0/0.12				
68974-023	1	BLACK	60.0/2.36	301025-XXX	65883-005	LIGHT GRAY	UNPLATED	30U"GXT	3.0/0.12	CUT & STRIP			
	2	RED	190.0/7.48										
	3	GREEN	190.0/7.48										
	4	YELLOW	60.0/2.36						3.0/0.12				
68974-024	1	RED	81.8/3.22	301025-XXX	65883-005	LIGHT GRAY	UNPLATED	30U"GXT	5.08/0.20	CUT & STRIP			
	2	WHITE	234.2/9.22										
	3	GREEN	234.2/9.22										
	4	BLACK	81.8/3.22						5.08/0.20				
68974-025	1	RED	40.0/1.57	301025-XXX	65883-005	LIGHT GRAY	UNPLATED	30U"GXT	3.0/0.12	CUT & STRIP			
	2	WHITE	180.0/7.09										
	3	GREEN	180.0/7.09										
	4	BLACK	40.0/1.57						3.0/0.12				
68974-026	1	RED	82.55/3.25	301025-XXX	SK11521-2	BLACK	PLATING	15U"AU	5.08/0.20	CUT & STRIP			
	2	WHITE	234.95/9.25										
	3	GREEN	234.95/9.25										
	4	BLACK	82.55/3.25						5.08/0.20				
68974-027	1	RED	40.0/1.57	301025-XXX	65883-005	LIGHT GRAY	UNPLATED	30U"GXT	3.0/0.12	CUT & STRIP			
	2	WHITE	183.0/7.20										
	3	GREEN	183.0/7.20										
	4	BLACK	40.0/1.57						3.0/0.12				
68974-028	1	RED	50.0/1.97	300979-XXX	65883-005	LIGHT GRAY	UNPLATED	30U"AU	3.0/0.12	CUT & STRIP			
	2	WHITE	180.0/7.09										
	3	GREEN	180.0/7.09										
	4	BLACK	50.0/1.97						3.0/0.12				



SHEET INDEX	ISSUE B	SHEET NO. 6	CUSTOMER		TOLERANCES UNLESS OTHERWISE NOTED		DATE		DR. JACOB		MATERIAL	
			THIRD ANGLE PROJECTION		LINEAR		OCT 22 09		OCT 22 09		MATT	
			DO NOT SCALE DRAWING		MM		OCT 22 09		CK'D J.TSAO		FINISH	
					INCH		OCT 22 09		ENGR. JACOB			
					ANGLES		OCT 22 09		APP'D J.TSAO			
					-0.30		OCT 22 09		SCALE A4		TITLE MOD. JACK A'SSY 616W	
					RADIUS		OCT 22 09		SIZE A4		DWG. NO. 68974-XXX	
					0.40		OCT 22 09		SRT 6 OF			
					0.01		OCT 22 09					
					0.002		OCT 22 09					
					0.002		OCT 22 09					

product no  
SEE CHART

PRODUCT NO.	WIRE NO.	WIRE COLOR	DIM. 'L'	INS. WIRE STYLE (NOTE 5)	HOUSING MATERIAL (NOTE 2)	HOUSING COLOR	SPLICE FINISH (NOTE 3)	SPRING CONTACT PLATING (NOTE 4)	DIM. 'X'	FINISH ON WIRE END
68974-029	1	RED	40.00/1.58	TYPE B	ABS UL 94V-0	LIGHT GRAY	UNPLATED	30U" GXT	3.0/0.12	CUT & STRIP
	2	WHITE	193.00/7.60							
	3	GREEN	193.00/7.60							
	4	BLACK	40.00/1.58							
68974-030	1	RED	40.00/1.58	TYPE B	ABS UL 94V-0	LIGHT GRAY	UNPLATED	30U" AU	2.5/.10	CUT & STRIP
	2	WHITE	↕							
	3	GREEN	↕							
	4	BLACK	40.00/1.58							
68974-031	1	RED	44.00/1.732	TYPE B	ABS UL 94V-0	LIGHT GRAY	UNPLATED	30U" GXT	3.0/0.12	CUT & STRIP
	2	WHITE	194.00/7.638							
	3	GREEN	204.00/8.031							
	4	BLACK	44.00/1.732							
68974-032	1	RED	163.0/6.42	TYPE B	ABS UL 94V-0	LIGHT GRAY	UNPLATED	30U" GXT	3.0/.12	CUT & STRIP
	2	WHITE	↕							
	3	GREEN	↕							
	4	BLACK	163.0/6.42							

MKT CODE		tolerances unless otherwise specified		CUSTOMER COPY		FCI	
dr	eng	0.00-0.25/ .00-.01	projection	616 W SPADELESS MOD JACK		code	
F	T	0.00-0.13/ .000-.005	mm	product family		MOO JACK	
G	ECR.T.0137	0.000-0.00/ .0000-.002	inch	size/dwg no		TWIN	
H	TU0714	±.030	scale	A4		68974	
sheet		revision		sheet		7 of 7	
index	sheet	1					