

NOTES:

1. SPECIFICATIONS:

ELECTRICAL:
 WITHSTANDING VOLTAGE: MINIMUM 1000 V RMS @ SEA LEVEL
 INSULATION RESISTANCE: INITIAL 5000 MEGOHMS MAXIMUM,
 1000 MEGOHMS MIN. AFTER ENVIRONMENTAL TESTING.
 CONTACT RATING: 5 AMPS
 CONTACT RESISTANCE: 2.7 MILLIOHMS MAX.

MATERIALS:
 INSULATOR: BLACK UL94V-0 RATED GLASS FILLED NYLON
 CONTACT(030-1952-000): COPPER ALLOY
 CONTACT AREA PLATING: GOLD OVER NICKEL,
 CONNECTOR SHELL: STEEL, PLATING ZINC WITH CLEAR CHROMATE.

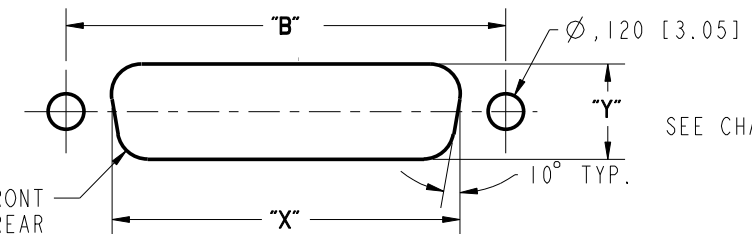
ENVIRONMENTAL:
 OPERATING TEMPERATURE: -65°C TO +125°C

TERMINATION:
 CRIMP WILL ACCOMODATE # 20 TO 28 AWG WIRE.
 TERMINATION-TOOLS:
 CRIMP TOOL: M22520/2-01
 INSERTION/EXTRACTION TOOL: CIET-20-HDB
 POSITIONER: EP-580

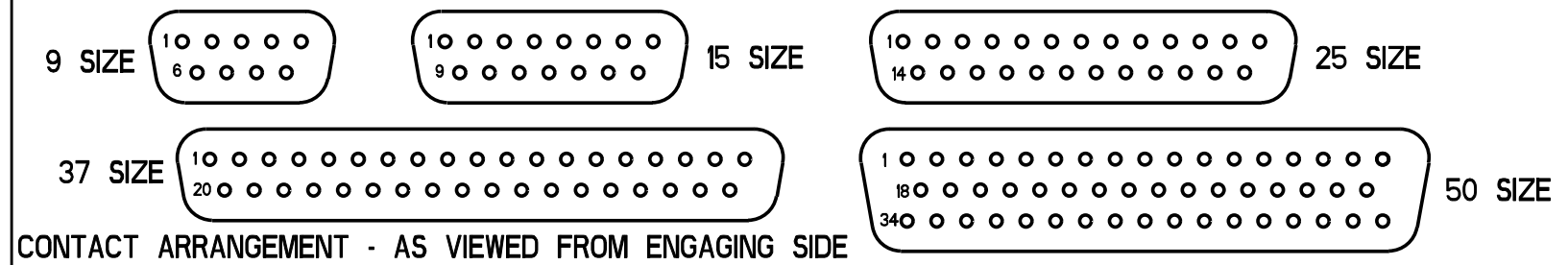
2. DIMENSIONS IN [] ARE IN MILLIMETERS.

DRAWING REVISIONS			
REV	DOCUMENT	APP	DATE
A	DO 05-11146	AKB	01/07/06
B	ECN 06E296		

NUMBER OF POSITIONS	SELECTIVE GOLD FLASH PLATING (.120" [3.05] MTG. HOLES)		CONTACTS	DIMENSION										FRONT MOUNTING HOLE DIMENSIONS		REAR MOUNTING HOLE DIMENSIONS	
	PART NO.	FACTORY NO.		"A"	"B"	"C"	"D"	"E"	"F"	"G"	"H"	"J"	"K"	"X"	"Y"	"X"	"Y"
9	DEUH-9P	702 03 09 001	INCLUDED	1.213 [30.81]	.984 [24.99]	.697 [17.70]	.360 [9.14]	.759 [19.28]	.422 [10.72]	.045 [1.14]	.030 [0.76]	.422 [10.72]	.874 [22.20]	.513 [13.03]	.806 [20.47]	.449 [11.40]	
	DEUH-9P-FO	702 03 09 005	NOT INCLUDED														
15	DAUH-15P	702 03 15 001	INCLUDED	1.541 [39.14]	1.312 [33.32]	1.025 [26.03]	.494 [12.55]	1.083 [27.51]	.422 [10.72]	.045 [1.14]	.039 [0.99]	.426 [10.82]	1.202 [30.53]	.513 [13.03]	1.134 [28.80]	.449 [11.40]	
	DAUH-15P-FO	702 03 15 005	NOT INCLUDED														
25	DBUH-25P	702 03 25 001	INCLUDED	2.088 [53.04]	1.852 [47.04]	1.583 [40.21]	.378 [9.60]	1.629 [41.38]	.422 [10.72]	.045 [1.14]	.039 [0.99]	.426 [10.82]	1.743 [44.27]	.513 [13.03]	1.674 [42.52]	.449 [11.40]	
	DBUH-25P-FO	702 03 25 005	NOT INCLUDED														
37	DCUH-37P	702 03 37 001	INCLUDED	2.729 [69.32]	2.500 [64.50]	2.231 [56.67]	.484 [12.29]	2.272 [57.71]	.534 [13.56]	.060 [1.52]	.039 [0.99]	.426 [10.82]	2.391 [60.73]	.623 [15.82]	2.326 [59.08]	.555 [14.10]	
	DCUH-37P-FO	702 03 37 005	NOT INCLUDED														
50	DDUH-50P	702 03 50 001	INCLUDED	2.635 [66.93]	2.406 [61.11]	2.127 [54.02]	.484 [12.29]	.605 [15.37]	2.178 [55.32]	.534 [13.56]	.060 [1.52]	.039 [0.99]	2.297 [58.34]	.623 [15.82]	2.218 [56.34]	.555 [14.10]	
	DDUH-50P-FO	702 03 50 005	NOT INCLUDED														



ROHS COMPLIANT



UNITS	ENGLISH	PRO/E	Cinch	
DO NOT SCALE DRAWING	DESIGNED BY: V. SKUZA	DATE: 06/17/05	1700 FINLEY RD LOMBARD, IL. 60148	
	DESIGN ENGINEER: A. BALI	06/17/05	D*U SERIES CRIMP & POKE CONNECTOR PLUG ASS'Y (.120" HOLES)	
	DESIGN ENGINEERING MGR.: A. SHAH	07/09/05	MATERIAL SPEC NUMBER	CONTROL SPEC NUMBER
	MFG. ENGINEERING: J. OCEGUERA	07/07/05	PROJECT NUMBER: C14740	
	QUALITY ASSURANCE: A. VAZQUEZ	07/06/05	CAD FILE NUMBER: DXUHXXP	DRAWING NUMBER: D*UH-XXP
			CAGE IDENT NO. / SIZE: 71785 B	SCALE: 1:1 SHEET 1 OF 1