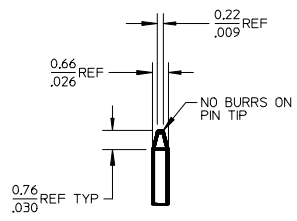
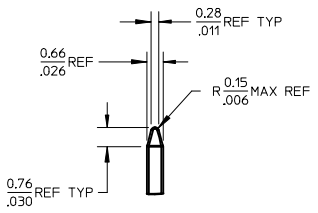


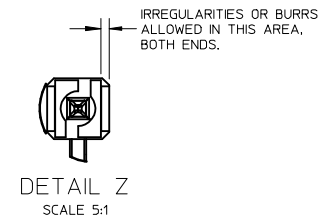
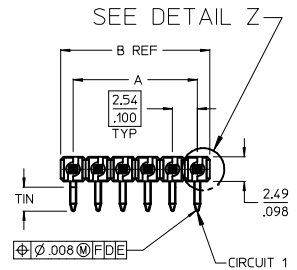
NO. CKTS	DIM. A	DIM. B
2	2.54	5.08
3	1.00	2.00
3	5.08	7.62
3	2.00	3.00
4	7.62	10.16
4	3.00	4.00
5	10.16	12.70
5	4.00	5.00
6	12.70	15.24
6	5.00	6.00
7	15.24	17.78
7	6.00	7.00
8	17.78	20.32
8	7.00	8.00
9	20.32	22.86
9	8.00	9.00
10	22.86	25.40
10	9.00	10.00
11	25.40	27.94
11	10.00	11.00
12	27.94	30.48
12	11.00	12.00
13	30.48	33.02
13	12.00	13.00
14	33.02	35.56
14	13.00	14.00
15	35.56	38.10
15	14.00	15.00
16	38.10	40.64
16	15.00	16.00
17	40.64	43.18
17	16.00	17.00
18	43.18	45.72
18	17.00	18.00
19	45.72	48.26
19	18.00	19.00
20	48.26	50.80
20	19.00	20.00
21	50.80	53.34
21	2.000	2.100
22	53.34	55.88
22	2.100	2.200
23	55.88	58.42
23	2.200	2.300
24	58.42	60.96
24	2.300	2.400
25	60.96	63.50
25	2.400	2.500
26	63.50	66.04
26	2.500	2.600
27	66.04	68.58
27	2.600	2.700
28	68.58	71.12
28	2.700	2.800
29	71.12	73.66
29	2.800	2.900
30	73.66	76.20
30	2.900	3.000
31	76.20	78.74
31	3.000	3.100
32	78.74	81.28
32	3.100	3.200
33	81.28	83.82
33	3.200	3.300
34	83.82	86.36
34	3.300	3.400
35	86.36	88.90
35	3.400	3.500
36	88.90	91.44
36	3.500	3.600



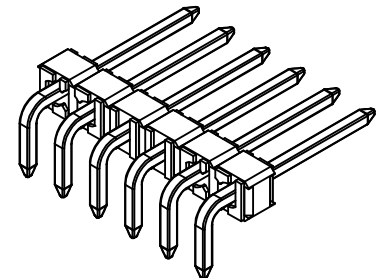
DETAIL X
SCALE 5:1
SEE NOTE 10



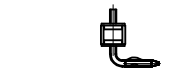
DETAIL Y
SCALE 5:1
SEE NOTE 10



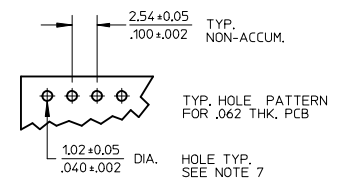
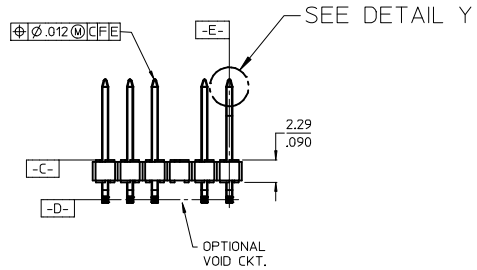
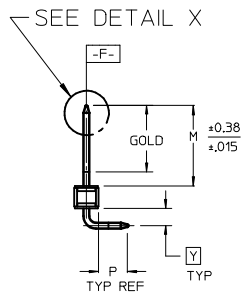
DETAIL Z
SCALE 5:1



- NOTES:
- MATERIAL: GLASS FILLED NYLON
UL, 94V-0, COLOR: BLACK
 - FINISH:
(154) OVERALL TIN: 0.00254/.000100 MIN. OVER
NICKEL: 0.00127/.000050 MIN.
(208) SELECT GOLD: 0.00038/.000015 MIN.
SELECT TIN: 0.00254/.000100 MIN.
OVERALL NICKEL UNDERPLATE: 0.00127/.000050 MIN.
(228) SELECT GOLD: 0.00076/.000030 MIN.
SELECT TIN: 0.00254/.000100 MIN.
OVERALL NICKEL UNDERPLATE: 0.00127/.000050 MIN.
 - PRODUCT SPECIFICATION: PS 10-07.
 - PACKAGING INFORMATION: SEE TABLES
 - SOLDERABILITY PER SMES-152.
 - PIN PUSH OUT FORCE: 3 LBS. MIN
 - KINK PIN OPTION NOT RECOMMENDED FOR 2 CIRCUIT PARTS.
HOLE SIZE MAY NEED TO BE ADJUSTED FOR 2 CIRCUIT PARTS WITH KINK OPTION FOR PROPER INSERTION INTO THE PCB. SEE SMES-42003 FOR ADDITIONAL INFORMATION ON KINK PIN DIRECTION AND PLACEMENT.
 - HEADERS ARE NOT STACKABLE ON 2.54/.100 CENTERS.
 - THIS PART CONFORMS TO CLASS B REQUIREMENTS OF COSMETIC SPECIFICATION PS-45499-002.
 - PIN TIP DIMENSIONS ARE SHOWN FOR REFERENCE ONLY. DIMENSIONS APPLY PRIOR TO PLATING OR ASSEMBLY.



OPTIONAL KINK PIN
SEE NOTE 7



2-*	A1
1	A3
SHEET	REV

REVISE NOTE 7 EC NO: UCP2013-1030 DRWN:MMSTROH 2012/09/12 CHKD:HK(IPPER 2012/09/14 APPR:FSMITH 2012/10/09 DESCRIPTION	QUALITY SYMBOLS	GENERAL TOLERANCES (UNLESS SPECIFIED)	DIMENSION STYLE	SCALE	DESIGN UNITS	THIRD ANGLE PROJECTION
	▽=0	mm INCH	MM/IN	2:1	INCH	THIRD ANGLE PROJECTION
	▽=0	4 PLACES ± --- ± ---	DRAWN BY DATE	SAMIEC 2004/07/20	TITLE	KK 100 HEADER ASSEMBLY FLAT RIGHT ANGLE BREAKAWAY, LEAD-FREE
	▽=0	3 PLACES ± --- ± .010	CHECKED BY DATE	SAMIEC 2004/07/20		
	2 PLACES ± 0.25 ± .015	APPROVED BY DATE	MARGULIS 2004/07/20	MATERIAL NO.	DOCUMENT NO.	SHEET NO.
	1 PLACE ± 0.38 ± ---			SEE CHART	SD-42377-002	1 OF 2
	0 PLACE ± ±			SIZE B	THIS DRAWING CONTAINS INFORMATION THAT IS PROPRIETARY TO MOLEX INCORPORATED AND SHOULD NOT BE USED WITHOUT WRITTEN PERMISSION	
		ANGULAR ± 1/2° DRAFT WHERE APPLICABLE MUST REMAIN WITHIN DIMENSIONS				

A-42377-0006					
HEADER NUMBER:	42312-0036				
PIN NUMBER:	42663-AZA154				
PIN LENGTH: L	.550/13.97				
MATING LENGTH: M	.244/6.20				
GOLD POINT: G	N/A				
PIN HEIGHT: Y	.070/1.78				
PC TAIL LENGTH: P	.120/3.05				
TIN: T	OVERALL				
CKTS:	2-36				
KINKS:	NONE				
REMOVED BACKWALLS:	NONE				
VOIDED CKTS:	NONE				
PACKAGING:	BULK PK-40873-0041				
CKTS	MATERIAL NUMBER	ENG NUMBER	CKTS	MATERIAL NUMBER	ENG NUMBER
06	50-29-1672	42377-0006			

A-42377-0355					
HEADER NUMBER:	42312-0036				
PIN NUMBER:	42663-BCB228				
PIN LENGTH: L	.565/14.35				
MATING LENGTH: M	.244/6.20				
GOLD POINT: G	.100/2.54				
PIN HEIGHT: Y	.070/1.78				
PC TAIL LENGTH: P	.135/3.43				
TIN: T	.135/3.43				
CKTS:	2-36				
KINKS:	PER SMES-42003				
REMOVED BACKWALLS:	NONE				
VOIDED CKTS:	NONE				
PACKAGING:	BULK PK-40873-0041				
CKTS	MATERIAL NUMBER	ENG NUMBER	CKTS	MATERIAL NUMBER	ENG NUMBER
05	50-29-1623	42377-0355			

REV: A1	SEE SHEET ONE	TITLE: HEADER ASSEMBLY, RT. ANGLE .100 CENTERS BREAKAWAY, LEAD-FREE	SHEET No. - 2 -
DOCUMENT NUMBER: SD- 42377-002		CREATED / REVISED BY: J. LOWE 07/22/05	CHECKED BY: A. DERR 07/22/05
		APPROVED BY: F. SMITH 07/22/05	