

# MICRO SWITCH

A DIVISION OF MILWAUKEE POLY-HONEYWELL REGULATOR COMPANY  
 FREEPORT, ILLINOIS

FED. MFR. CODE 91929

## SWITCH - BASIC

CATALOG LISTING

YA-2RL-A6

ADK8500

YA-2RL-A6

PAGE 1 OF 1

M

DRAWING NUMBER

7

ISSUE

REPLACES

RELEASE NO. CO 8520

17 FEB 06

RJ

CHECK

56

2 APR. 56

C.V.T.

CHECK

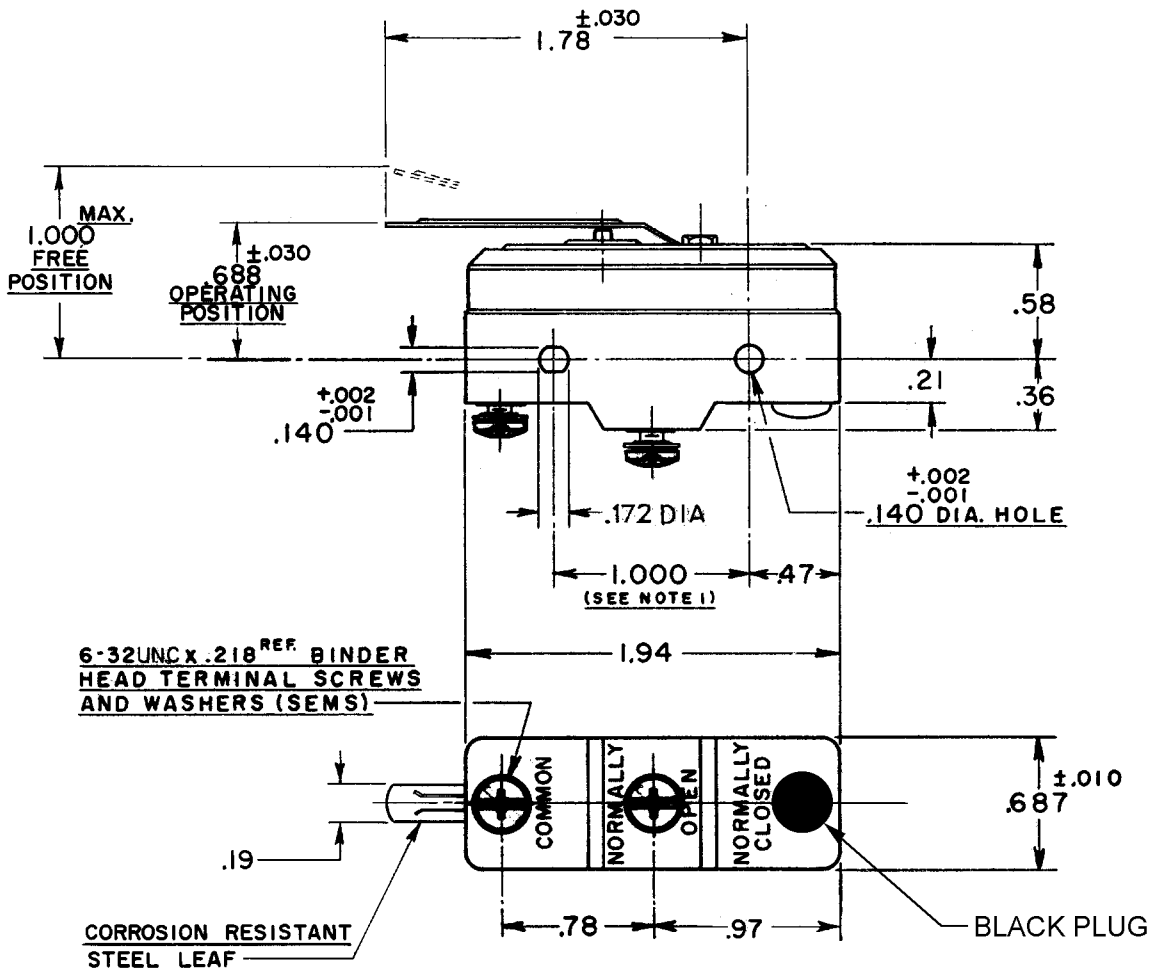
56

G.C.H. 3 APR. 56

CHECK

56

R. E. R. 28 MAR



6-32UNC x .218<sup>REF</sup> BINDER HEAD TERMINAL SCREWS AND WASHERS (SEMS)

CORROSION RESISTANT STEEL LEAF

**NOTE -**

1-MOUNTING HOLES WILL ACCEPT PINS OR SCREWS OF .139 MAX. DIA. ON 1.000 ±.002 CENTERS.

**REVISIONS**

A	CO-69351-D	JWB	18 JUL 91
B	CO-77588	KDR	29 MAR 94
C	CO78111		
6	DLT		JUL 94
D	CO93346		
	DLT		27 AUG 98
E	0000677		
	JLH		25 JUN 03
F	0018388		
	TGP		17 FEB 06

THIS DRAWING COVERS A PROPRIETARY ITEM AND IS THE PROPERTY OF MICRO SWITCH, A DIVISION OF HONEYWELL. THIS DRAWING IS NOT TO BE COPIED OR USED WITHOUT THE APPROVAL OF MICRO SWITCH.

**CHARACTERISTICS**

OPERATING FORCE ----- 9 OZ. MAX.  
 RELEASE FORCE ----- 1 OZ. MIN.  
 DIFFERENTIAL TRAVEL ----- .065 MAX.  
 OVERTRAVEL ----- DO NOT OVERTRAVEL MORE THAN .060

**ELECTRICAL DATA**

CONTACT ARRANGEMENT  
 S. P. N. O.  
 BREAK DISTANCE  
 .020 MIN.  
 L23 20A 125, 250 OR 480 VAC  
 10A 125 VAC "L"  
 1HP 125 VAC, 2HP 250 VAC  
 1/2A 125 VDC, 1/4A 250 VDC  
 L288  
 L308  
 L315  
 CE   
 20(3)A 250V ~ T85 5E4

**SCALE FULL**

DO NOT SCALE PRINT

UNLESS OTHERWISE SPECIFIED DIMENSIONS ARE IN INCHES  
**TOLERANCES ARE:**  
 ONE PLACE (.0) ±.030  
 TWO PLACE (.00) ±.015  
 THREE PLACE (.000) ±.005  
 ANGLES ±

WEIGHT .063 LB.

RASTER

DRAWN

74-96