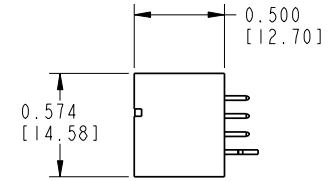
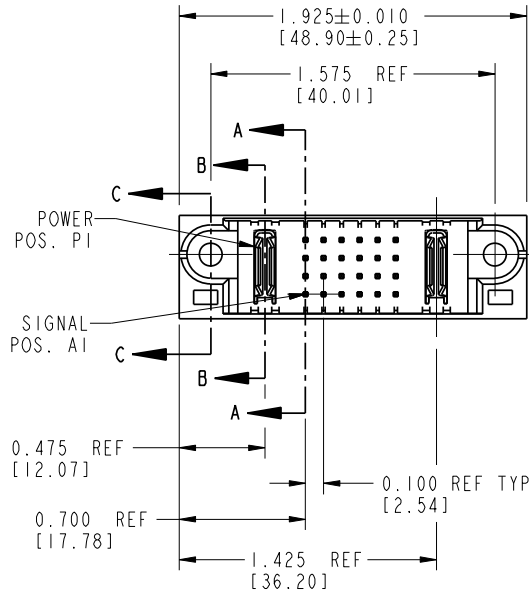
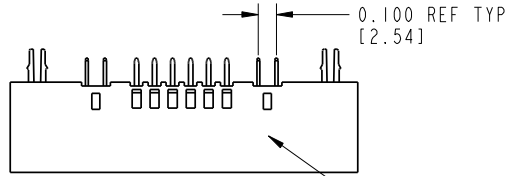


Tous droits strictement réservés. Reproduction ou communication à des tiers interdite sans quelque forme que ce soit sans autorisation écrite du propriétaire. Propriété de c FCI. Droits de reproduction FCI.

All rights strictly reserved. Reproduction or issue to third parties in any form without written authority from the proprietor. Property of FCI. Copyright FCI.

PRODUCT No.	ROWS	POWER		SIGNAL						POWER	
		E1	P1	1	2	3	4	5	6	P2	E2
51952-013-- NOTE 2	D C B A										



CODE	DIM "M" ±.010 [0.25]	CONTACT TYPE
E	0.270 [6.86]	SIGNAL
H	0.220 [5.59]	SIGNAL
PA	N/A [N/A]	POWER
HA	N/A [N/A]	HOLD-DOWN

mat'l code				NOTE 1		tolerances unless otherwise specified		CUSTOMER	
lir	ecn no.	dr	date	linear	.XX±.01/0.X±0.3	COPY		A FCI www.fciconnect.com	
A	V21906	NEM	12/20/02		.XXX±.005/0.XX±0.13	projection		title IP + 24S + 1P VERTICAL SOLDER HEADER	
B	DG05-0478	Ryan	11/17/05	angles	.XXX±.0020/0.XXX±0.051	INCH/MM		product family PwrBlade code 213	
				dr	0°±2°	scale 1:1		size dwg no 51952-013 sheet 1 of 3	
				engr	M. MOSTOLLER 12/20/02				
				chr	H. BREWBAKER 12/20/02				
				appd	M. MOSTOLLER 12/20/02				
sheet index	revision	B	B						
	sheet	1	2						

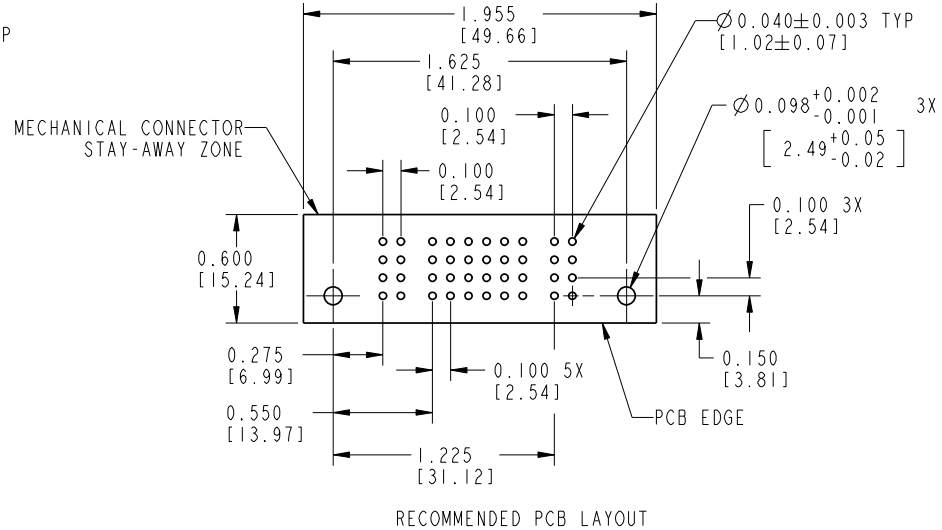
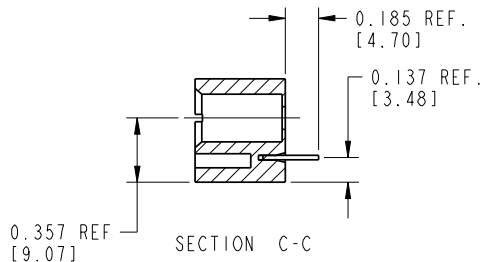
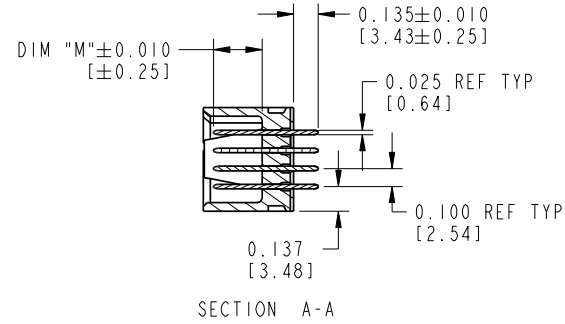
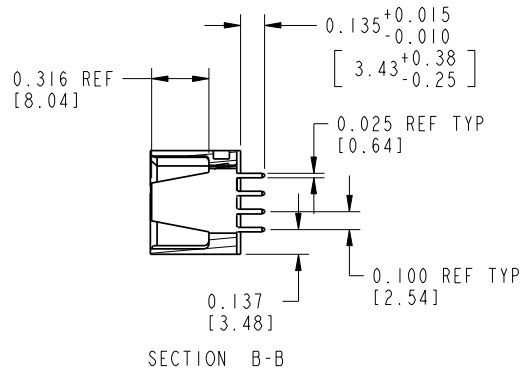
cage code 22526

Pro/E

Tous droits strictement reserves. Reproduction ou communication a des tiers interdite sans queque forme que ce soit sans autorisation ecrite du proprietaire. Propriete de c FCI. Droits de reproduction FCI.

All rights strictly reserved. Reproduction or issue to third parties in any form without written authority from the proprietor. Property of FCI. Copyright FCI.

PRODUCT NUMBER  
51952-013--  
NOTE 2



mat'l code		NOTE 1		tolerances unless otherwise specified		CUSTOMER			
lir	ecn no.	dr	date	linear	.XX±.01/0.X±0.3	COPY	 www.fciconnect.com		
B				angles	.XXX±.005/0.XX±0.13 .XXX±.002/0.XXX±0.051	projection			
				dr	M. MOSTOLLER 12/20/02	 INCH/MM	title	IP + 24S + IP	
				enr	M. MOSTOLLER 12/20/02		product family	PwrBlade	code
				chr	H. BREWBAKER 12/20/02	scale	size	dwg no	213
				appd	M. MOSTOLLER 12/20/02	1:1	A	51952-013	sheet
sheet index	revision sheet								2 of 3

cage code 22526

Pro/E

Tous droits strictement reserves. Reproduction ou communication a des tiers interdite sous quelque forme que ce soit sans autorisation écrite du propriétaire. Propriete de c FCI. Droits de reproduction FCI.

**FCI**

All rights strictly reserved. Reproduction or issue to third parties in any form whatever is not permitted without written authority from the proprietor. Property of FCI. Copyright FCI.

1 | 2

3 |

4

**PRODUCT NUMBER**  
51952-013--  
NOTE 2

**CONNECTOR NOTES:**

1. HOUSING MATERIAL: UL 94 V-0 GLASS FILLED HIGH TEMP THERMOPLASTIC  
POWER CONTACT MATERIAL: COPPER ALLOY  
SIGNAL CONTACT MATERIAL: COPPER ALLOY

2. PLATING:

51952-013: SIGNAL PIN: 30u"/0.76um Au OVER 50u"/1.27um Ni ON THE CONTACT AREA  
AND 100u"/2.54um SnPb OVER 50u"/1.27um Ni ON THE TERMINATION AREA  
POWER PIN: 30u"/0.76um Au OVER 50u"/1.27um Ni ON THE CONTACT AREA  
AND 100u"/2.54um SnPb OVER 50u"/1.27um Ni ON THE TERMINATION AREA

51952-013LF: SIGNAL PIN: 30u"/0.76um Au OVER 50u"/1.27um Ni ON THE CONTACT AREA  
AND 78u"/2.00um Sn OVER 50u"/1.27um Ni ON THE TERMINATION AREA  
POWER PIN: 30u"/0.76um Au OVER 50u"/1.27um Ni ON THE CONTACT AREA  
AND 78u"/2.00um Sn OVER 50u"/1.27um Ni ON THE TERMINATION AREA

PART NUMBER 51952-013LF MEETS EUROPEAN UNION DIRECTIVE AND OTHER COUNTRY REGULATIONS AS DECCRIBED IN GS-22-008.

THE HOUSING WILL WITHSTAND EXPOSURE TO 260° PEAK TEMPERATURE FOR 10 SECONDS IN A WAVE SOLDER APPLICATION WITH A CIRCUIT BOARD.

3. "MANUFACTURER'S" NAME, P/N, AND DATE CODE TO APPEAR ON THIS SURFACE

4. PRODUCT SPECIFICATION GS-12-149

5. ALL DIMENSIONS AND TOLERANCES ARE IN ACCORDANCE WITH ASME Y14.5M, UNLESS OTHERWISE SPECIFIED.

**PCB NOTES:**

6. ALL DIMENSIONS ARE BASIC UNLESS OTHERWISE SPECIFIED.

7. ALL THROUGH HOLES ARE LOCATED WITH A TRUE POSITION OF 0.004 [0.10]

8. ALL HOLE DIAMETERS ARE FINISHED HOLE SIZE

9. Ø0.098[2.41] THROUGH HOLES ARE UNPLATED.

10. Ø0.0453±0.0010 [1.151±0.025] DRILLED HOLES PLATED WITH 0.0003 [0.008] MIN SnPb OVER 0.001 [0.03] TO 0.003 [0.08] Cu PLATING TO ACHIEVE A Ø0.040±0.003 [1.02±0.07] HOLE.

**CONFIDENTIAL**

mat'l code		NOTE 1		tolerances unless otherwise specified		CUSTOMER		<b>FCI</b>		www.fciconnect.com	
lfr	ecr no.	dr	date	linear	.XX±.01/0.X±0.3	COPY		projection		title	
B					.XXX±.005/0.XX±0.13	INCH/MM				IP + 24S + 1P	
				angles	.XXX±.002/0.XXX±0.051	scale		product family		code	
				dr	0°±2°	1:1		PwrBlade		213	
				engr	M. MOSTOLLER 12/20/02	A		size		sheet	
				chr	H. BREWBAKER 12/20/02	51952-013		dwg no		3 of 3	
				appd	M. MOSTOLLER 12/20/02						
sheet index	revision sheet										

A

A

B

B

1 | 2

Pro/E

3 |

cage code 22526

4