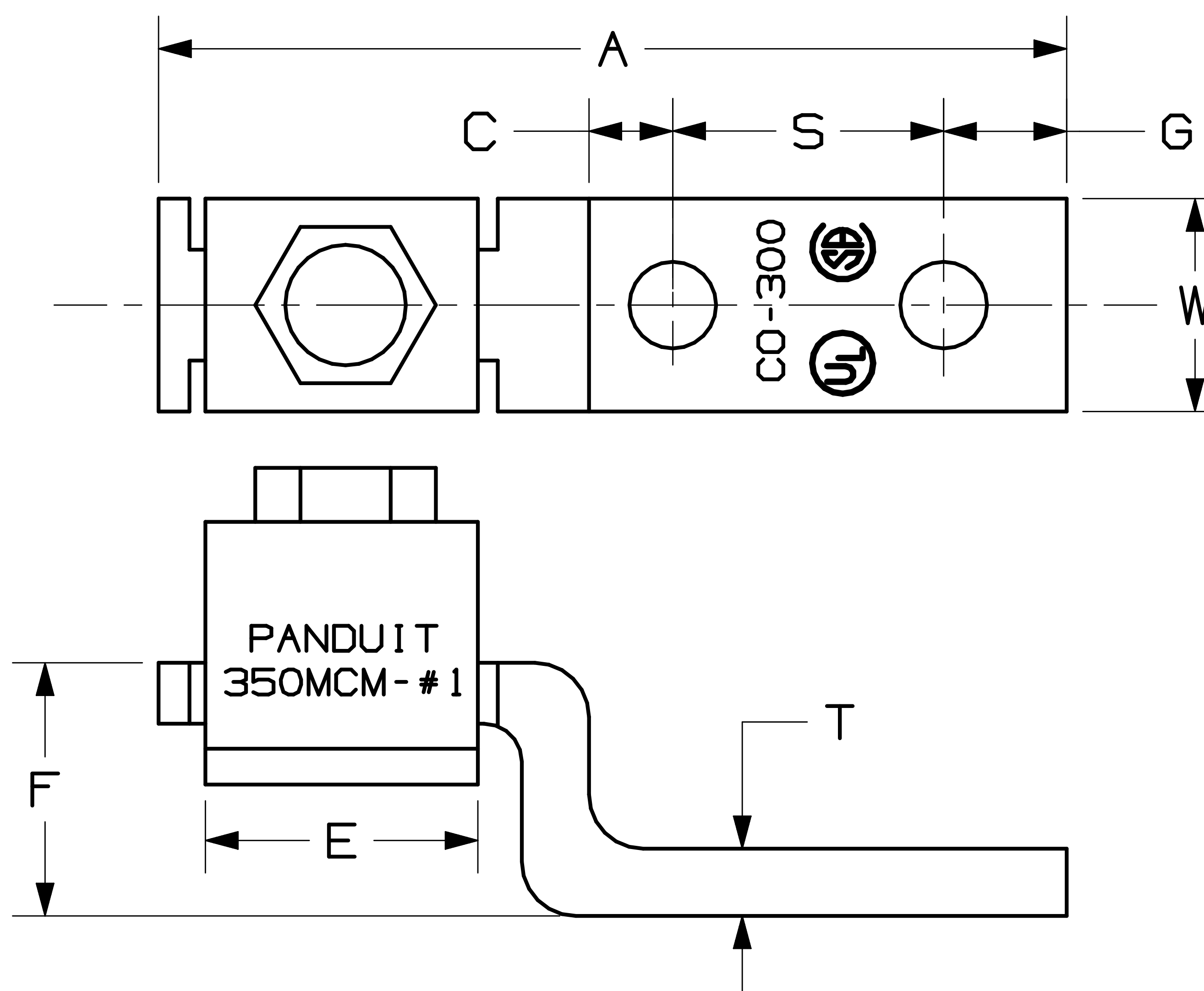


THIS COPY IS PROVIDED ON A RESTRICTED BASIS AND IS NOT TO BE USED IN ANY WAY DETRIMENTAL TO THE INTERESTS OF PANDUIT CORP.

NOTES:

1. UL AND CSA LOGOS APPEAR ON ALL PARTS AS SHOWN.
2. FOR USE WITH COPPER WIRE ONLY
3. MATERIAL: COPPER
4. IF HEX KEY SIZE IS NOT GIVEN, FLAT HEAD SCREW IS USED.
5. * NEMA HOLE SIZES AND SPACING.
6. ADDITIONAL MULTIPLE WIRE COMBINATIONS FOR CD35-36-Q ARE:
 - A. TWO-#10'S
 - B. TWO-#12'S
 - C. TWO-#14'S
 - D. ONE-#10 WITH ONE-#12
 - E. ONE-#12 WITH ONE-#14
7. ADDITIONAL MULTIPLE WIRE COMBINATIONS FOR CD70-14-Q ARE:
 - A. ONE-#8 WITH ONE-#4
 - B. ONE-#8 WITH ONE-#6
8. THIS PART IS ROHS COMPLIANT.



PART NUMBER	COPPER CONDUCTOR RANGE	CURRENT RATING (AMPS)	BOLT HOLE SIZE	HEX KEY SIZE	DIMENSIONS IN INCHES								STD. PKG. QTY.	STD. CTN. QTY.
					A	C	E	F	G	S	T	W		
C035-36-QY	#14-#6	50	3/16	---	2.19	.25	.44	.41	.22	1.00	.07	.38	25	100
C070-14-QY	#12-#1	90	1/4	---	2.50	.56	.50	.52	.25	1.00	.09	.50	25	100
C0125-14-QY	#2-#1/0	125	1/4	---	2.97	.41	.63	.64	.44	1.00	.13	.63	25	100
C0225-56-QY	#6-#4/0	225	5/16	5/8	3.62	.75	1.00	.97	.50	1.00	.13	1.00	25	100
C0300-38-3Y	#1-350	300	3/8	3/4	5.69	1.25	1.23	1.38	.81	1.87	.19	1.00	3	12
*C0400-38-3Y	#1/0-500	400	3/8	3/4	6.00	1.06	1.53	1.39	.94	1.75	.19	1.50	3	12
*C0650-12-3Y	600-1000	650	1/2	1-1/8	6.25	.69	1.88	2.00	1.19	1.75	.25	2.00	3	12

CAD FILENAME/LAYERS C41547_01

PANDUIT CORP. TINLEY PARK, ILLINOIS

CO SERIES COPPER MECHANICAL LUGS

UNLESS OTHERWISE SPECIFIED, DIMENSIONAL TOLERANCES ARE:
 (.X) ± (.XXX) ±
 (.XX) ± ANGLES ±

UNLESS OTHERWISE SPECIFIED, ALL DIMENSIONS ARE GIVEN IN INCHES, THIRD ANGLE PROJECTION.

01	3/06	JHNU	LEM	REVISED ROHS NOTE	PC00334												
00	3/06	JHNU	LEM	DRAWING RELEASED - ROHS COMPLIANT	PC00332												
REV	DATE	BY	CHK	DESCRIPTION	ECN	CUST	PM										

DRAWN BY	JHNU	MAT'L:	
DATE	3/06		COPPER
CHK'D			
SCALE	N/A		
DRAWING NO.	C41547	DWG SIZE	A