

**TM-3000™ and TM-4000™
Press Adapter Kit for
JAE* Applicator**



**Application Tooling
Specification Sheet**



Order No. 63801-8400

FEATURES

- This Press Adapter Kit is used to install a specific version of a JAE Applicator in the Molex® TM-3000™ or TM-4000™ press
- Positive clamping to the press
- Installation time minimal with common metric allen wrenches.

DESCRIPTION

- This Press Adapter Kit is designed for a specific version of a JAE Applicator used in the JAE CP215-5B crimp press. This Molex® adapter kit allows the JAE applicator to be installed into a Molex® TM-3000™ or TM-4000™ press. See Figure 1.

JAE
APPLICATOR

TM-3000™
PRESS

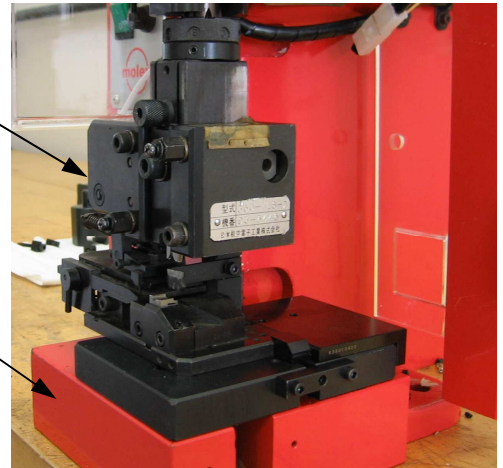


Figure 1



Always turn off and disconnect the power supply to the press when installing or removing this Press Adapter Kit or the JAE applicator. Refer to the Molex® TM-3000™ / TM-4000™ press manual, part number [63801-7299](http://www.molex.com) found at www.molex.com.

Note: Once the press guard is open, the guard interlock switch will disconnect power to the motor.

Changes to Press

The following changes are required to install the Press Adapter Kit for a JAE applicator in a Molex® TM-3000™ or TM-4000™ press:

1. The original Press Yoke (63801-7216) should be removed. See Figure 2. Note: This is held in place with two (2) 6mm set screws in the same tapped hole in the Mounting Block.
2. The Quick Change Plate (63801-7220) on the press should be removed. See Figure 2. Note: This is held in place with two (2) 6mm x 20mm socket head cap screws.

TM-3000™ PRESS

REMOVE THE
PRESS YOKE
FROM
THE MOUNTING
BLOCK

QUICK
CHANGE
PLATE

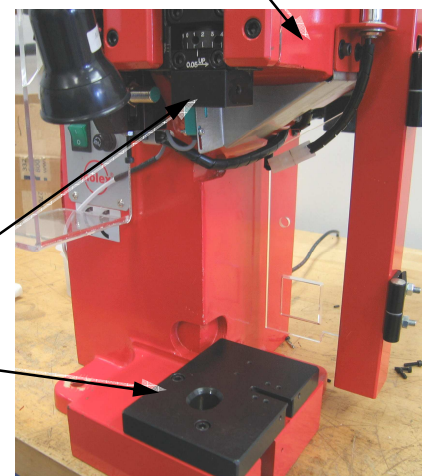
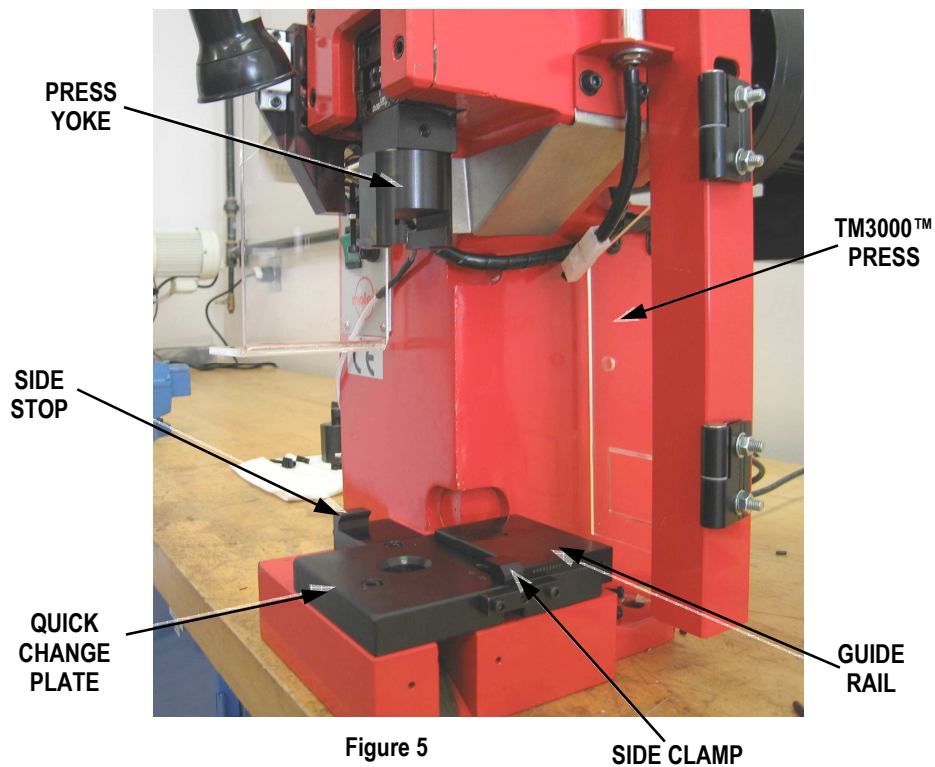
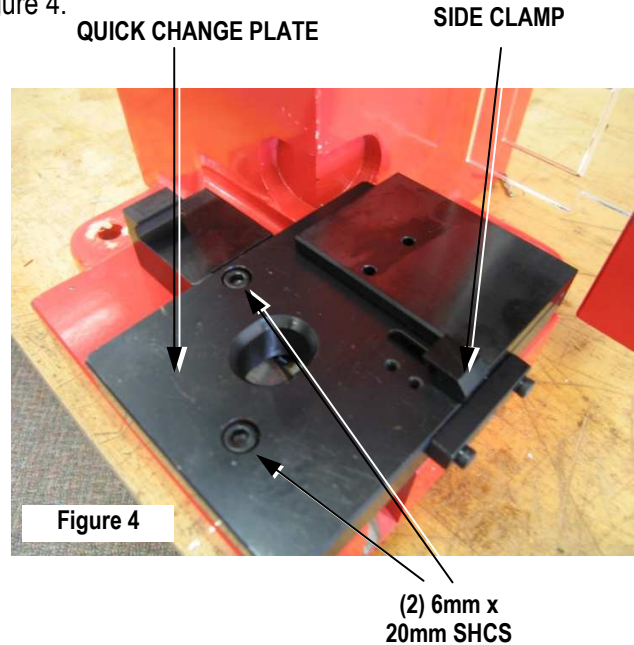
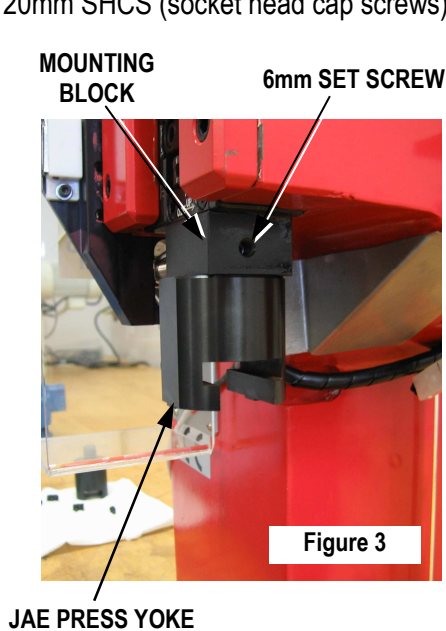


Figure 2

Press Adapter Kit Setup

1. Attach the JAE* press yoke (63801-8401) to the Mounting Block in the press. See Figure 3.
2. Tighten the 6mm set screw with an allen wench in the Mounting Block to secure the JAE Press Yoke. Add the second 6mm set screw and tighten it against the first set screw. See Figure 3.
3. The lower portion (Quick Change Plate) of the Press Adapter Kit needs to be installed using two (2) 6mm x 20mm SHCS (socket head cap screws). See Figure 4.



Applicator Installation and Removal



Always turn off and disconnect the power supply to the press when installing or removing this Press Adapter Kit or the JAE* applicator. Refer to the Molex® TM-3000™ / TM-4000™ press manual, part number [63801-7299](http://www.molex.com) found at www.molex.com.

- 1 Open the press guard.
- 2 Clean the lower portion (Quick Change Plate) of the Press Adapter Kit of scrap or chips that may interfere with the JAE applicator installation.



Molex® recommends a soft brush; **do not use** compressed air to clean the equipment. The forces created by compressed air can force debris into the tool. Failure to observe these precautions may result in injury or property damage.

- 3 For all Molex® presses follow the procedure below:
 - a. Using a 4mm hex wrench, turn the M5 SHCS clockwise until the Locking Clamp is fully opened. See Figure 5.
 - b. Slide the applicator ram lug bolt into the Press Yoke.
 - c. Pull the applicator down, extending the applicator ram, to seat the applicator body to the base plate.
 - d. Slide the JAE applicator onto the Quick Change Plate until it touches the Guide Rail, and captured by the Side Stop at the same time.
 - e. To lock applicator, tighten the Side Clamp by turning the M5 x 40mm SHCS counter clockwise until tight.
- 4 Close the press guard.
- 5 Hand cycle press. (See: *Manually Cycling the Press* section of the Molex® TM-3000™ / TM-4000™ press manual, part number [63801-7299](http://www.molex.com) found at www.molex.com).
- 6 Reconnect power.
- 7 Turn press power switch to on.

For removal of the JAE applicator, reverse the previous steps.

To see the Press Adapter Kit for a JAE applicator installed in a Molex® TM-3000™ press, see Figure 5.

Guard removed for visual purposes in all Figures.

Contact Information

For more information on Molex® application tooling please contact Molex® at 1-800-786-6539.

<http://www.molex.com>

Parts List

63801-8400 JAE* Press Adapter Kit				
Item	Order No.	Engineering No.	Description	Qty
1	63801-8401	63801-8401	Press Yoke	1
2	63801-8402	63801-8402	Guide Rail	1
3	63801-8403	63801-8403	Side Stop	1
4	63801-8404	63801-8404	Side Clamp	1
5	63801-7222	63801-7222	Quick Change Plate	1
6	63800-6919	63800-6919	Retainer-Clamp	1
Hardware				
7	N/A	N/A	M4 X 12mm long SHCS	2**
8	N/A	N/A	M4 X 50mm long SHCS	1**
9	N/A	N/A	M5 X 12mm long SHCS	1**
10	N/A	N/A	M5 X 40mm long SHCS	1**
11	N/A	N/A	M5 X 50mm long SHCS	1**
12	N/A	N/A	M4 X 12mm long SHCS	2**

** Replacements available from an industrial supply company such as MSC® (1-800-645-7270).

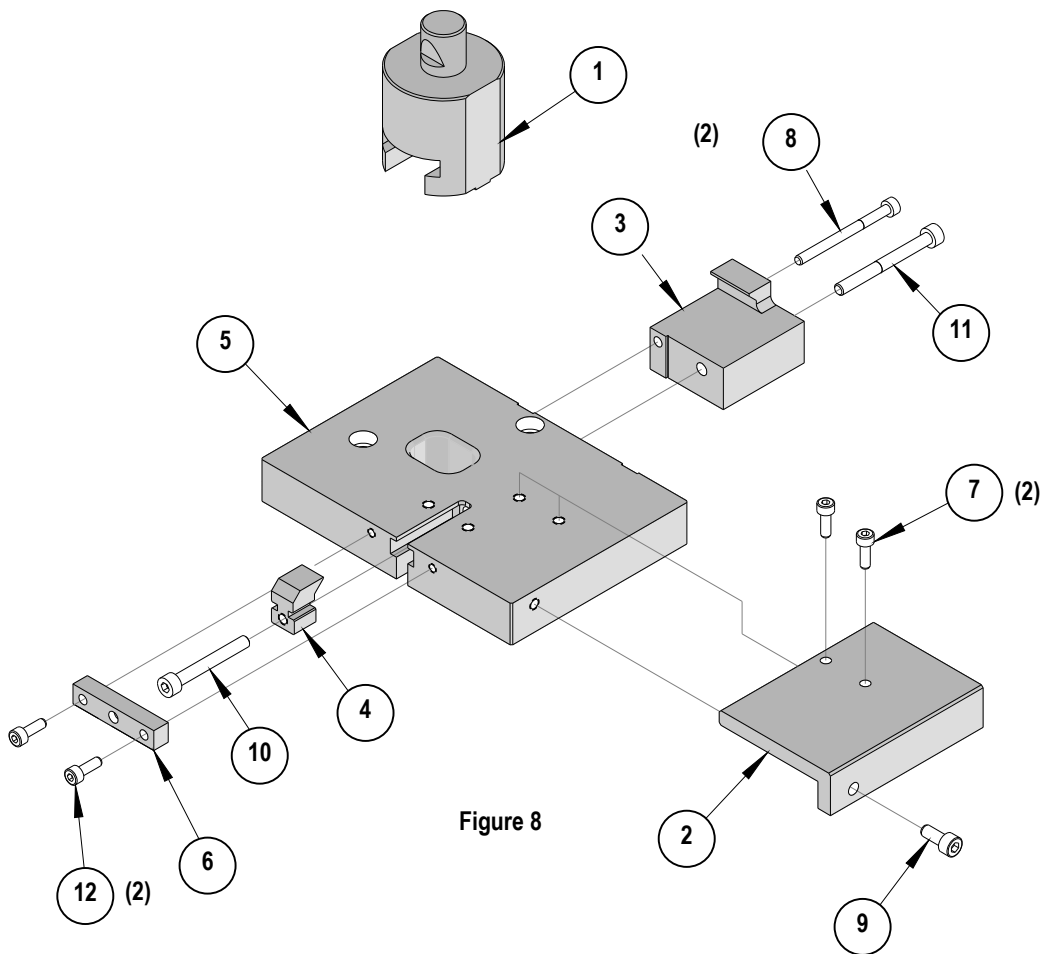


Figure 8