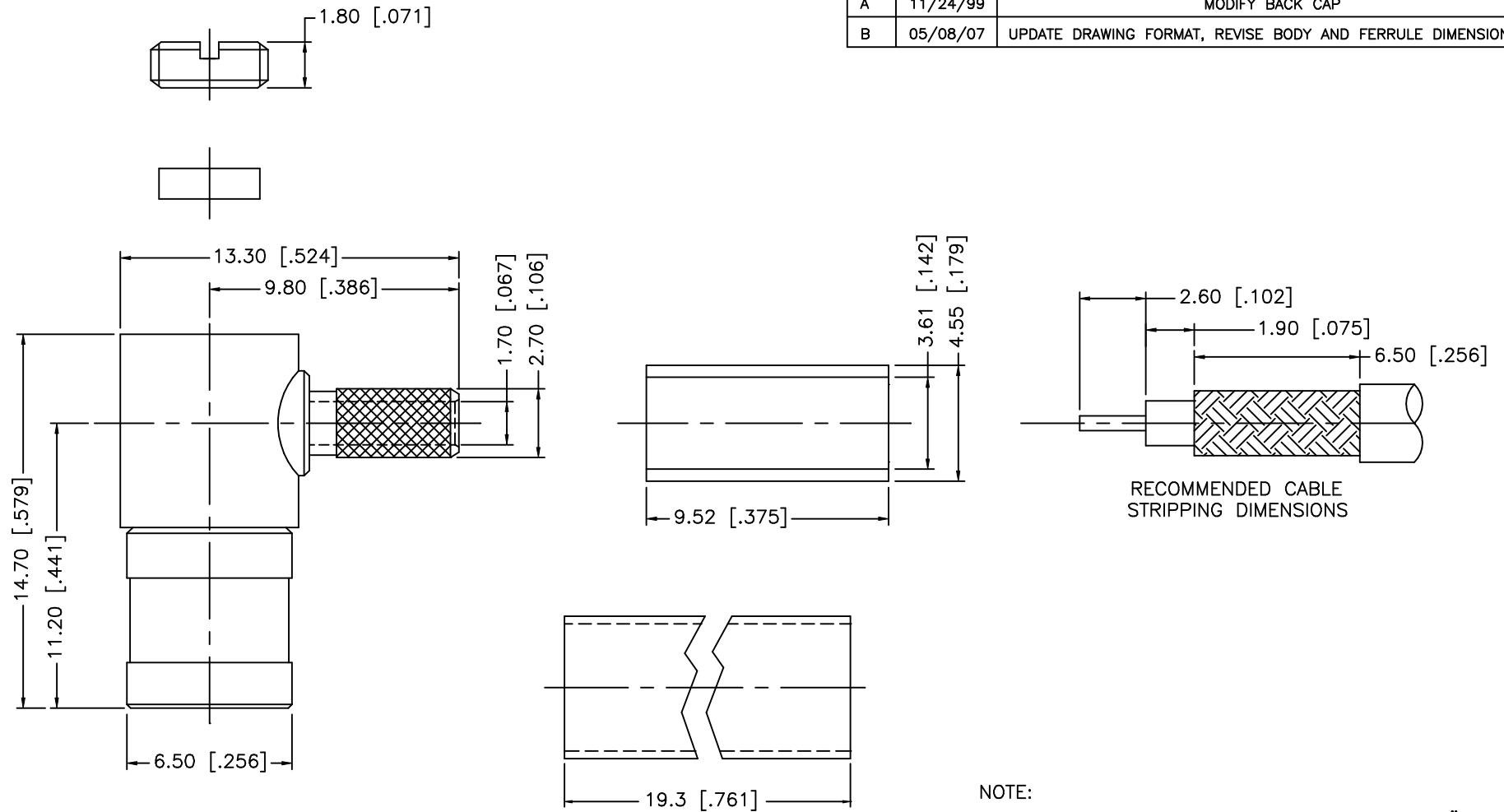


REV.	DATE	DESCRIPTION
A	11/24/99	MODIFY BACK CAP
B	05/08/07	UPDATE DRAWING FORMAT, REVISE BODY AND FERRULE DIMENSIONS



NOTE:

1. CRIMPED FERRULE HEX CRIMP SIZE .151"
2. CONTACT PIN TO SOLDER.

REV.	DATE	DESCRIPTION		
8				
7				
6	HEAT SHRINK TUBE	1		
5	COVER	BRASS	NICKEL	1
4	FERRULE	COPPER	NICKEL	1
3	CONTACT PIN	BER. COPPER	GOLD	1
2	INSULATOR	TEFLON	NATURAL	1
1	BODY	BRASS	NICKEL	1
	DESCRIPTION	MATERIAL	FINISH	QTY

UNLESS OTHERWISE SPECIFIED DIMENSIONS ARE IN MILLIMETERS. DIMENSIONS IN [ ] ARE IN INCHES AND FOR CUSTOMER REFERENCE ONLY.		APPROVALS	DATE	<h1 style="color: blue; text-align: center;">Amphenol Connex</h1>	
UNLESS OTHERWISE SPECIFIED TOLERANCES FOR MILLIMETERS ARE: 0.5 - 8mm ± 0.20mm 8 - 30mm ± 0.40mm 30 - 120mm ± 0.50mm		DRAWN	G.R.S.		05/08/07
UNLESS OTHERWISE SPECIFIED TOLERANCES FOR INCHES ARE: .020 - .315 = ± 0.007" .315 - 1.180 = ± 0.015" 1.180 - 4.724 = ± 0.020"		CHECKED			PART DESCRIPTION
DO NOT SCALE DRAWING		ISSUED			SMB R/A CRIMP PLUG (FOR RG-316U/D CABLE)
		SHEET	1 OF 1		PART NO.
		CAD FILE	C:/142/142188.DWG	142188	
		DWG. NO.	142188.DWG	REV. B	
				SIZE A	
				SCALE NA	