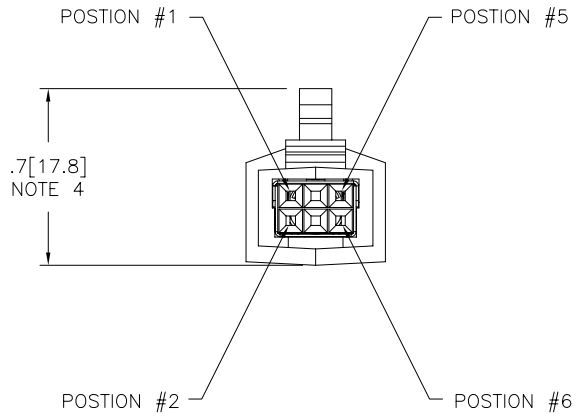
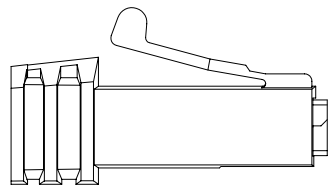
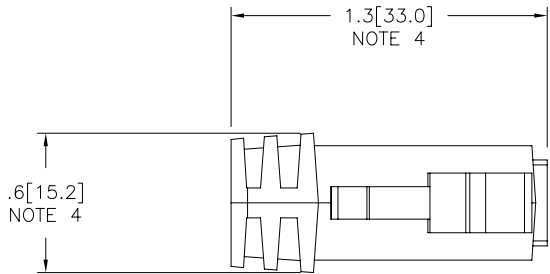


PRODUCT NUMBER
SEE SHT. 2



mat'l. code				surface ISO 1302 ✓		tolerance ISO 406 ISO 1101		projection ⊕		product family LATCH-N-LOK			
ltr	ecr	no	dr	date		tolerances unless otherwise specified		INCH/MM		title			
E	V91916	RGD		10/7/99		angles	linear	.XX±.01/.3	2X3 LATCH-N-LOK 360° SHIELDED				
F	V92065	RGD		10/29/99				.xxx±.005/.13	PLUG CONN. KIT W/O PV'S				
G	V01017	TFG		5/15/00		0'±2'		.xxxx±.0020/.051	scale 1:1				
H	V01093	TFG	dr	7/6/00		M. HERNANDEZ		12/03/04		dwg no			
J	M04-0229	MHT		12/03/04		enfr M. BARRIOS		12/03/04		sheet 1 of 3 size			
K	M06-0285	AGS		7/28/06		chr M. BARRIOS		12/03/04		74902 A3			
L	M06-0365	AGS		9/20/06		appd M. BARRIOS		12/03/04		type Product Customer Drawing			
sheet	revision	L	L	L									
index	sheet	1	2	3									



FCIconnect.com

Copyright FCI

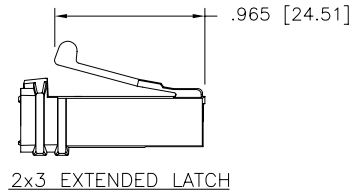
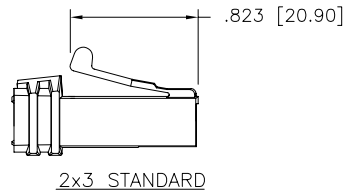
74902-6UVXLF

X EXTENDED LATCH OPTION

U	COLOR	
01	LT GRAY	OBS
02	OFF WHITE	
03	DK. GRAY	OBS
04	BLACK	
05	SLATE GRAY	OBS
07	SILVER GRAY	
08	PEARL WHITE	OBS
09	PEBBLE GRAY	

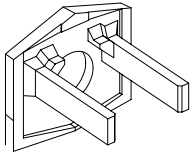
EXAMPLE

74902-607XLF: IS A 2X3 REAR EXIT PLUG IN SILVER GRAY WITH A CABLE EXIT HOLE SIZE OF .250[6.35] CABLE RANGE , ALSO WITH THE EXTENDED LATCH OPTION.

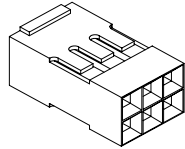


Copyright FCI

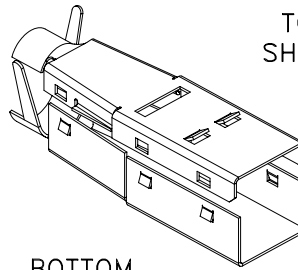
mat'l. code		surface ISO 1302 ✓		tolerance ISO 406 ISO 1101		projection ⊕		product family LATCH-N-LOK	
ltr		ecn no dr		date		tolerances unless otherwise specified		title	
L						.XX±.01/.3 linear .xxx±.005/.13 .xxxx±.0020/.051		2X3 LATCH-N-LOK 360° SHIELDED PLUG CONN. KIT W/O PV'S	
						0'±2'		INCH/MM scale 1:1	
				dr M. HERNANDEZ 12/03/04				dwg no sheet 2 of 3 size	
				enfr M. BARRIOS 12/03/04				74902 A3	
				chr M. BARRIOS 12/03/04				type Product Customer Drawing	
				appd M. BARRIOS 12/03/04					
sheet index		revision sheet							



REAR CAP

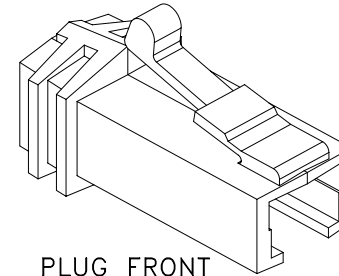


MINI LATCH HOUSING



TOP SHIELD

BOTTOM SHIELD



PLUG FRONT

NOTES:

1. EACH KIT CONTAINS ONE EACH OF THE FOLLOWING COMPONENTS
LATCH-N-LOK PLUG
LATCH-N-LOK END CAP
MINI LATCH HOUSING
360° SHIELD CANS.
2. COMPONENTS ARE BULK PACKAGED WITH 100 pcs. OF A COMPONENT PER BAG. PVC'S MUST BE ORDERED SEPARATELY.
3. MATERIALS USED: PLUGS AND CAPS ARE MOLDED IN POLYCARBONATE. THE MINI LATCH HOUSING ARE MOLDED IN NYLON. COLOR IS BLACK. THE SHIELD CAN IS 3/4 HARD BRASS PLATED WITH 2.5um MIN. BRIGHT TIN. 1.0um MIN. NICKEL UNDERPLATE.
- ④ DIMENSIONS ARE APPROXIMATE AND REFLECT PLUG IN UNLATCHED STATE.
5. PART NUMBERS WITH LF IN THE END ARE LEAD FREE.
6. THIS PRODUCT MEETS EUROPEAN UNION DIRECTIVES AND OTHER COUNTRY REGULATION AS DESCRIBED IN GS-22-008.



FCIconnect.com

Copyright FCI

mat'l. code		surface ISO 1302 ✓		tolerance ISO 406 ISO 1101		projection ⊕		product family LATCH-N-LOK		
ltr	ecn	no	dr	date	tolerances unless otherwise specified		INCH/MM ↔	title		
L					angles	.XX±.01/.3		2X3 LATCH-N-LOK 360 SHIELDED PLUG CONN. KIT W/O PV'S		
					0°±2'	linear .XXX±.005/.13	scale 1:1	dwg no		
						.xxx±.0020/.051		sheet 3 of 3 size		
					dr	M. HERNANDEZ		12/03/04	74902	
					enfr	M. BARRIOS		12/03/04	A3	
					chr	M. BARRIOS		12/03/04	type Product Customer Drawing	
					appd	M. BARRIOS	12/03/04			
sheet index	revision sheet									