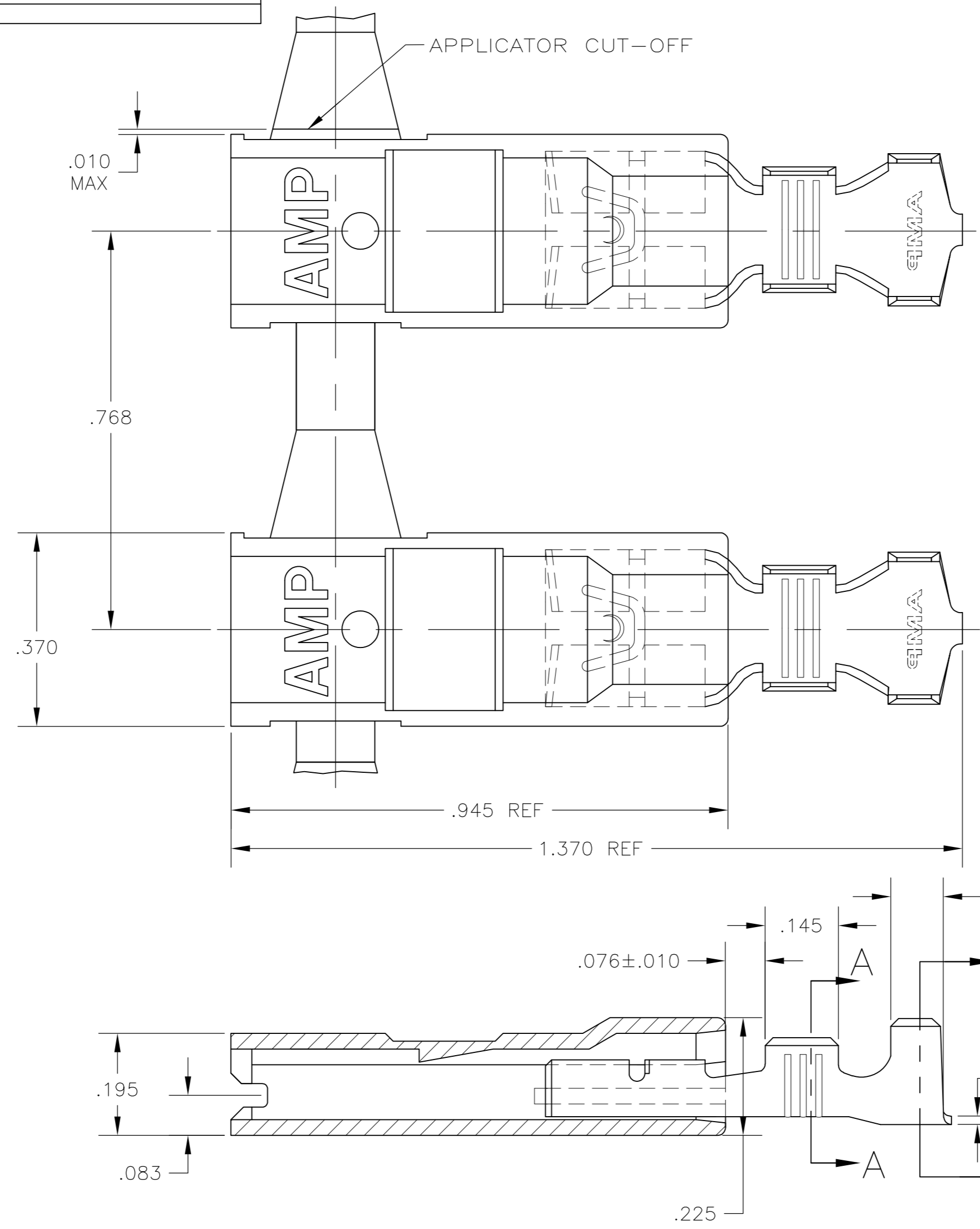
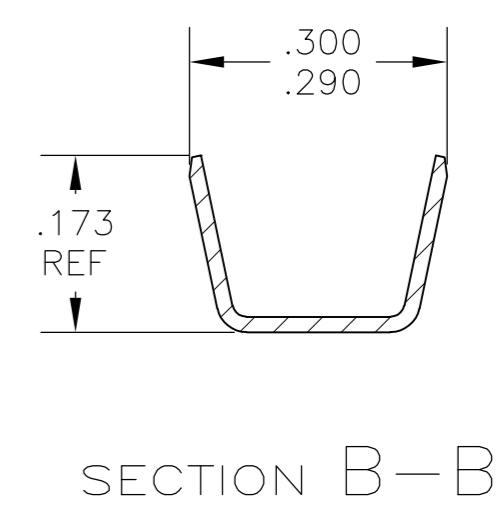
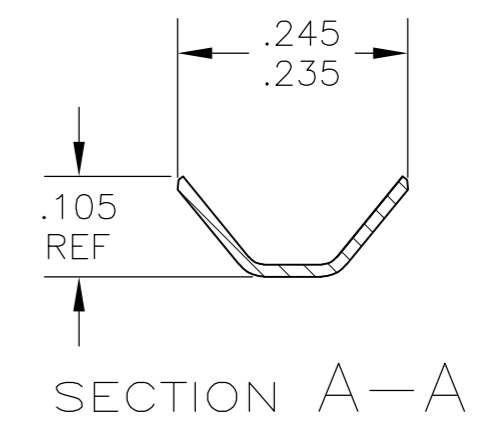


THIS DRAWING IS UNPUBLISHED. RELEASED FOR PUBLICATION
 © COPYRIGHT - By - ALL RIGHTS RESERVED.

LOC	DIST	REVISIONS			
P	LTR	DESCRIPTION	DATE	DWN	APVD
AF	50	C	REVISED PER ECR-12-013219	08JAN13	KH KR



- 1 LOW-INSERTION FASTON TERMINALS ARE USED IN THIS PRODUCT.
- 2 TIN PLATE PER .000040 MIN
- 3 WIRE SIZE IS 18-14 OR TWO 18'S AWG
- 4 INSULATION RANGE IS .110-.180 DIA OR TWO .105 MAX DIA
- 5 MATING TAB THK IS .032±.001
- 6 PRELIMINARY - NOT FOR PRODUCTION.
- 7 GLOW WIRE APPROVED; CONTACT TE ENGINEERING FOR SPECIFICATION (ALL WALL THICKNESSES ARE BETWEEN 0.4-3.0[.015-.118])



STANDARD	V2 NYLON, (WHITE)	BRASS - TIN	2	7	521998-2
STANDARD	V2 NYLON, (WHITE)	BRASS - PLAIN	6	6	521998-1
PACKAGING	HOUSING MATERIAL & FINISH	TERMINAL MATERIAL & FINISH	PART NO.		

THIS DRAWING IS A CONTROLLED DOCUMENT.		DWN RAGHAVENDRA 31JAN07	TE TE Connectivity	
DIMENSIONS: INCHES		CHK G.D. PORTA 31JAN07		
TOLERANCES UNLESS OTHERWISE SPECIFIED:		APVD G.D. PORTA 31JAN07	NAME	
0 PLC ± -		PRODUCT SPEC	ASSEMBLY, ULTRA-POD, RECEPTACLE, .250 SERIES	
1 PLC ± -		108-1285	SIZE	
2 PLC ± -		APPLICATION SPEC	CAGE CODE	
3 PLC ± .010		114-2124	DRAWING NO	
4 PLC ± -		WEIGHT	RESTRICTED TO	
ANGLES ± -		-	A2 00779 C=521998	
FINISH		FINISH	SCALE 5:1 SHEET 1 of 1 REV C	
SEE TABLE		SEE TABLE	CUSTOMER DRAWING	