

THIS DRAWING IS UNPUBLISHED. RELEASED FOR PUBLICATION
 COPYRIGHT 20 BY TYCO ELECTRONICS CORPORATION. ALL RIGHTS RESERVED.

ATLANTIC VERSION TERMINATOR INTERFACE ADAPTER	PART NUMBER	REVISION	DESCRIPTION	FEED TYPE	APPLICATOR STYLE CONVERSION CHART							
					CONVERT TO	PART NUMBERS REQUIRED						
	2266192-1	B	FINE CRIMP HEIGHT ADJUST	MECHANICAL	PNEUMATIC FEED	2119950-1	1338685-3	5-18022-5	2119641-1	2119799-1	2063440-1	
					SERVO LATCH PLATE	2119951-1	-	8-2266192-5	1901094-3	-	2168400-6 (QUANTITY 2)	
2266192-2	B	FINE CRIMP HEIGHT ADJUST	PNEUMATIC	MECHANICAL FEED	2119949-1	1338685-3	5-18022-5	2119653-1	-	-	-	-
				SERVO LATCH PLATE	2119951-1	-	8-2266192-5	1901094-3	-	2168400-6 (QUANTITY 2)		
				SMART APPLICATOR	2161326-1	-	8-2266192-4	-	-	-		
2266192-5	B	FINE CRIMP HEIGHT ADJUST	SERVO LATCH PLATE	MECHANICAL FEED	2119949-1	1338685-3	5-18022-5	2119653-1	-	-	-	
				PNEUMATIC FEED	2119950-1	1338685-3	5-18022-5	2119641-1	2119799-1	2063440-1		
2266192-6	B	NON-CRIMP HEIGHT ADJUST	SERVO LATCH PLATE	-	-	-	-	-	-	-	-	
2266192-7	B	FINE CRIMP HEIGHT ADJUST	NONE	-	-	-	-	-	-	-	-	
7-2266192-7	A	CRIMP TOOLING KIT	-	-	-	-	-	-	-	-	-	

APPLICATOR DATA		
CRIMP	SIZE	TYPE
WIRE	2.29 mm [.090]	F
INSUL	-	-

APPLICATOR INSTRUCTIONS
408-10389

TERMINAL DATA: TE TERMINAL		TE CRIMP SPECIFICATION	
TERMINAL NAME: TAB, FASTON, .110 SERIES			
WIRE STRIP LENGTH		INSULATION DIAMETER RANGE	
3.58-4.34 mm [.141-.171 IN]			
TERMINAL APPLICATION SPECIFICATION		114-2036	-
TERMINALS APPLIED			
TE TERMINAL	TE TERMINAL	TE TERMINAL	TE TERMINAL
63932-1	62384-1	62122-1	

WIRE SIZE	CRIMP HEIGHT mm [INCH]	CRIMP HEIGHT REFERENCE SETTING
18 AWG	1.55+/-0.05 [.061+/- .002]	6.0
20 AWG	1.45+/-0.05 [.057+/- .002]	7.2
22 AWG	1.40+/-0.05 [.055+/- .002]	7.7

-
- 1. RECOMMENDED SPARE PARTS
 - 2. GREASE BEARING SURFACES LIGHTLY
 - 3. LUBRICATE DAILY PER THE APPLICATOR INSTRUCTION SHEET SUPPLIED WITH THE APPLICATOR.
 - 4. APPLICATOR SPECIFIC DATA TO BE ENTERED INTO BLANK MEMORY CHIP AT ASSEMBLY. SEE BELOW FOR PART NUMBER:
 MECHANICAL FEED WITH "SMART APPLICATOR" CONVERSION: 8-2266192-4
 PNEUMATIC FEED WITH "SMART APPLICATOR" CONVERSION: 8-2266192-4
 SERVO FEED WITH "FINE CRIMP HEIGHT ADJUST": 8-2266192-5
 SERVO FEED WITH "NON-CRIMP HEIGHT ADJUST": 8-2266192-6
 - 5. ADJUSTMENT OF THE STRIPPER MAY BE REQUIRED WHEN MOVING THE APPLICATOR BETWEEN BENCH AND LEADMAKER APPLICATIONS.
 - 6. APPLY PART NUMBER 1-23419-5 LOCTITE TO THREADS OF ITEMS 62. FOR -6 ONLY APPLY PART NUMBER 1-23419-5 LOCTITE TO THREADS OF ITEMS 37.
 - 7. GREASE THREADS, GROOVE AND O-RING ON ITEMS 35 & 252.
 - 8. MAGNET, ITEM 166 MUST BE ORIENTED CORRECTLY IN ORDER TO PROPERLY ACTUATE THE COUNTER.
 - 9. CRIMP HEIGHT REFERENCE SETTING WAS THE SETTING USED WHEN THE APPLICATOR WAS QUALIFIED AT THE FACTORY. ADJUSTMENT MAY BE NECESSARY WHEN RUNNING APPLICATOR IN THE FIELD.
 - 10. SPARE FEED CAM STORAGE LOCATION REFER TO INSTRUCTION SHEET FOR ADDITIONAL INFORMATION.
 - 11. TO CONVERT THE APPLICATOR TO A NON-CARRIER CUTTING STYLE, REMOVE ITEM 13 AND ATTACH TO THE LOCATION ON THE BACK SIDE OF THE HOUSING. REFER TO INSTRUCTION SHEET FOR ADDITIONAL INFORMATION.
 - 12. WHEN ASSEMBLING A NON CRIMP HEIGHT ADJUST APPLICATOR (-6) USE SHIMS FROM ITEM 260 TO ACHIEVE A NOMINAL SHIM HEIGHT OF 4.25.

***WARNING**
 ON INSTALLATION, SET WIRE DISC, ITEM 40 TO LARGEST WIRE SIZE SETTING. USE OF SETTINGS BELOW MINIMUM REQUIRED CRIMP HEIGHT SETTING WILL CAUSE DAMAGE TO CRIMP TOOLING.

ATLANTIC VERSION
 Shown on sheets 1 of 4 & 2 of 4
 (Pacific version shown on sheets 3 of 4 & 4 of 4)

SET UP GAUGE	LOC	DIST	REVISIONS				
2119599-1	A	66	P LTR	DESCRIPTION	DATE	OWN	APPV
			A	RELEASE	29JAN2014	XZ	TE
			B	ECR-14-006145	25APR2014	JH	TE

-	-	1	-	-	-	2119957-2	APPLICATOR SHIM PACK	260
-	1	-	1	1	1	8-21084-0	O-RING, .676 ID, .070 DIA. MAT.	252
-	-	-	-	1	-	2119640-1	PUSH ROD, AIR FEED	250
-	-	-	-	1	-	2079988-1	BUSHING, LCH5-12, MISUMI	249
-	-	-	-	1	-	2119641-1	FEED CAM, AIR FEED	248
-	1	-	1	1	1	2119798-1	DETENT PIN	247
-	1	-	1	1	1	1-22279-3	SPRING, COMPRESSION	246
-	-	1	-	-	-	2119758-1	RAM, AMP STYLE, SIDE FEED, NON-ADJ.	245
-	1	1	1	1	1	7-18023-7	SCR, SKT HD CAP M3 X 4.0	241
-	-	2	2	-	-	2168400-6	SHCS, LOW HEAD, RoHS, M5 X 16	240
-	-	-	-	-	1	2119580-1	MECHANICAL FEED ASSEMBLY	239
-	-	-	-	1	-	2063440-1	AIR FEED MODULE	238
-	-	1	1	-	-	2119740-2	TAG, IDENTIFICATION	213
-	-	1	1	-	-	1901094-3	SPACER, FEEDER	198
-	-	-	-	2	-	21045-3	RING, RETAIN, EXTERN, 3/16 CRESCENT	172
-	1	1	1	1	1	994969-1	MAGNET, RARE EARTH HIGH ENERGY	166
-	REF	REF	REF	REF	REF	994970-2	COUNTER, MAGNETIC	164
-	-	-	-	1	-	240638-1	SPRING, FEED FINGER	163
-	-	-	-	1	-	3-23627-7	PIN, RETAIN, GRVD, 3/16 X .854	137
-	-	-	-	1	-	2119799-1	HOLDER, FEED FINGER, AF	136
-	-	REF	REF	-	-	SEE NOTE 4	MEMORY CHIP, PROGRAMMED	135
-	-	1	1	-	-	1633743-1	SERVO FEED LATCH ASM	133
-	1	1	1	1	1	1-18028-2	WASHER, FLAT, REG M4	119
-	-	REF	REF	-	-	2119944-1	FEED FINGER ASSEMBLY, SF	117
-	1	1	1	1	1	455888-6	SPACER, CRIMPER	82
-	1	1	1	1	1	2119956-1	DOCUMENTATION PACKAGE	71
-	1	-	-	1	1	2119740-1	TAG, IDENTIFICATION	67
-	2	2	2	2	2	2168078-1	SCREW, DRIVE, RH, RoHS, 2 x .188	66
-	1	-	1	1	1	2119793-1	LIMITER, ADJUSTMENT BOLT	63
-	3	-	3	3	3	992763-5	SCR, SET, SOC, CONE POINT, M3 x 4.0	62
-	1	1	1	1	1	2079383-4	SCR, BHSC, RoHS (M4 X 8)	60
-	-	-	-	1	1	5-18022-5	SCR, HEX HD CAP, M4 X 6.0	59
-	-	-	-	1	1	1338685-1	PAWL, FEED	56
-	4	4	4	4	4	2168400-1	SHCS, LOW HEAD, RoHS, M4 X 12	54
-	2	2	2	2	2	1-2168083-0	SCR, SKT HD CAP, RoHS, M4 X 10	53
-	1	1	1	1	1	5018030-1	NUT, HEX, REG, RoHS, M3	52
-	1	1	1	1	1	811242-5	BUMPER, HOLD DOWN	51
-	1	1	1	1	1	690753-2	SPACER, TONKER	50
-	-	-	-	1	2	18023-9	SCR, SKT HD CAP M4 X 6.0	49
-	-	-	-	-	1	2119652-1	FEED CAM, PRE FEED	48
-	-	-	-	-	1	2119653-1	FEED CAM, POST FEED	47
-	1	1	1	1	1	2119656-9	APPLICATOR BASIC ASSEMBLY, SF	46
-	1	-	1	1	1	2119370-1	RAM, AMP STYLE, SIDE FEED	44
-	1	1	1	1	1	2079383-7	SCR, BHSC, RoHS (M8 X 25)	41
-	1	-	1	1	1	2119645-1	DISC, NUMBERED FA WIRE ADJUSTMENT	40
-	1	-	1	1	1	2119957-1	APPLICATOR SHIM PACK	39
-	1	1	1	1	1	1-2119644-2	RAM WASHER, PRECISION	38
-	1	1	1	1	1	2119085-1	FA HEAD, ATLANTIC STYLE	37
-	1	-	1	1	1	2119092-1	BOLT, ADJUSTMENT	35
-	1	1	1	1	1	1752356-1	SUPPORT, TERMINAL	34
-	2	2	2	2	2	2079383-5	SCR, BHSC, RoHS (M4 X 20)	33
-	1	1	1	1	1	2161328-1	HEX HEAD, FLANGED, M5 x 8mm LONG	32
-	1	1	1	1	1	1320908-6	SPACER, STRIP GUIDE	30
-	1	1	1	1	1	2119959-4	ASSEMBLY, STRIP GUIDE	29
-	1	1	1	1	1	455888-3	SPACER, CRIMPER	28
-	1	1	1	1	1	240792-1	DRAG, TERMINAL	25
-	1	1	1	1	1	1320928-2	STRIP GUIDE	24
-	1	1	1	1	1	2168083-2	SCR, SKT HD CAP, RoHS, M4 X 8.0	21
-	1	1	1	1	1	1-18028-2	WASHER, FLAT, REG M4	20
-	1	1	1	1	1	2119533-1	STRIPPER, SIDE FEED	19
-	1	1	1	1	1	2119806-1	INSERT, SHEAR	13
-	1	1	1	1	1	3-22280-3	SPRING, COMPRESSION	12
-	1	1	1	1	1	1-356885-4	STOP, SHEAR	11
-	1	1	1	1	1	2119805-1	SHEAR HOLDER, FRONT	10
-	1	1	1	1	1	1803095-1	FLOATING SHEAR, FRONT	9
-	1	1	1	1	1	2-1633933-6	ANVIL, COMBINATION	8
-	-	-	-	-	-	-	-	7
-	-	-	-	-	-	-	-	6
-	1	1	1	1	1	2119757-8	DEPRESSOR, SHEAR	5
-	-	-	-	-	-	-	-	4
-	-	-	-	-	-	-	-	3
-	-	-	-	-	-	-	-	2
-	1	1	1	1	1	4-456406-1	CRIMPER, WIRE PREMIUM	1

DIMENSIONS:		TOLERANCES UNLESS OTHERWISE SPECIFIED:		DATE		DRAWING NO	
mm	0 PLC	±	0.5	OWN	X. ZHAO	07JAN2014	1
	1 PLC	±	0.13	CHK	L. ZHANG	07JAN2014	2
	2 PLC	±	0.013	APPV	T. ELBIN	07JAN2014	3
	3 PLC	±	0.001				
	4 PLC	±	0.0001				
	ANGLES	±	0.0001				

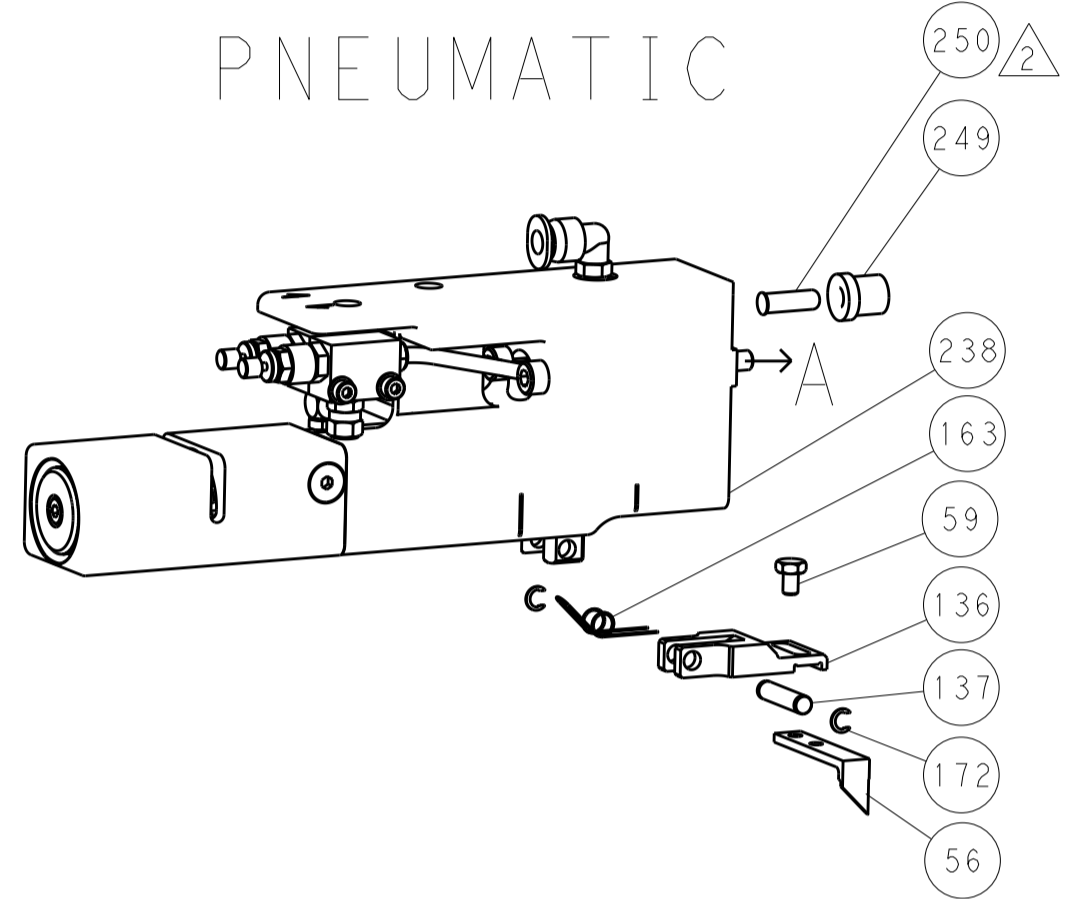
NAME	DESCRIPTION	ITEM NO
Customer Accessible Production Drawing	SCALE 1:2 SHEET 1 OF 4 REV B	

LOC		DIST		REVISIONS				
A	66	P	LTM	DESCRIPTION	DATE	DWN	APVD	
-	-	-	-	SEE SHEET 1	-	-	-	

FEED TYPE MECHANICAL



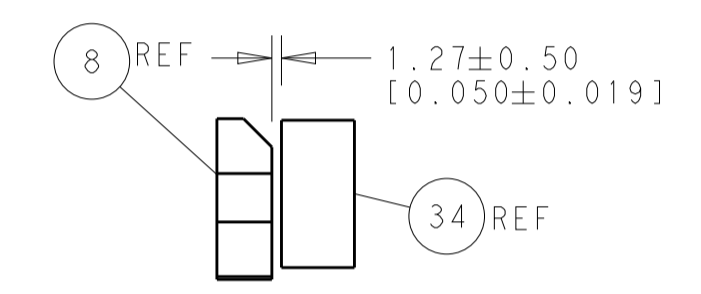
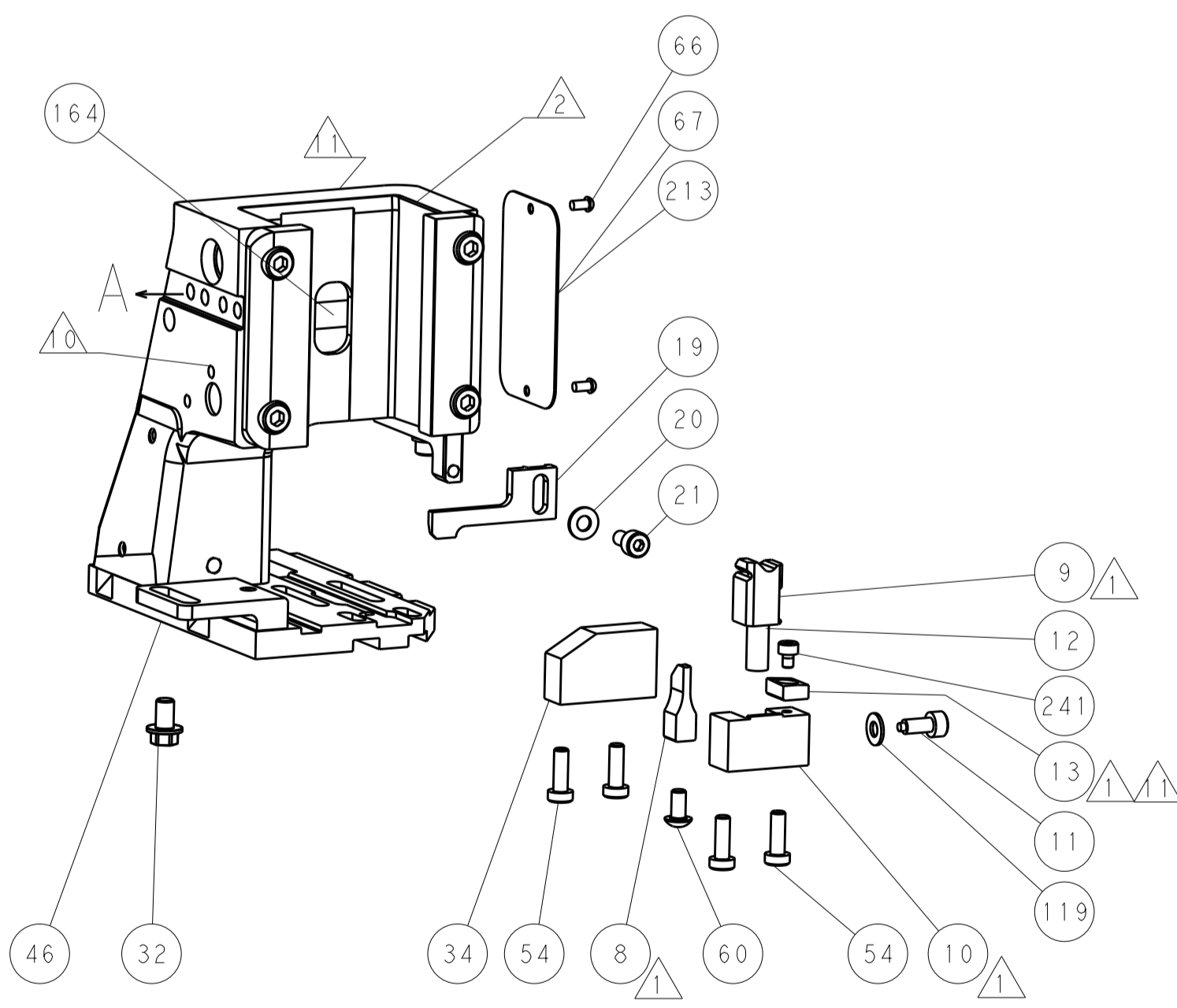
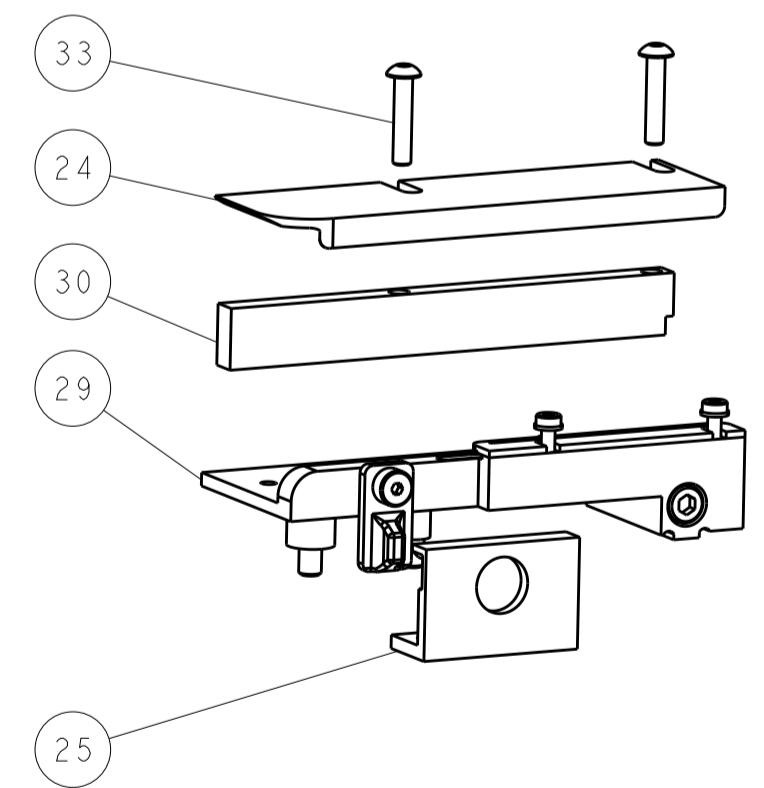
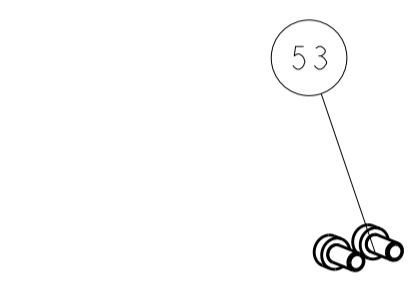
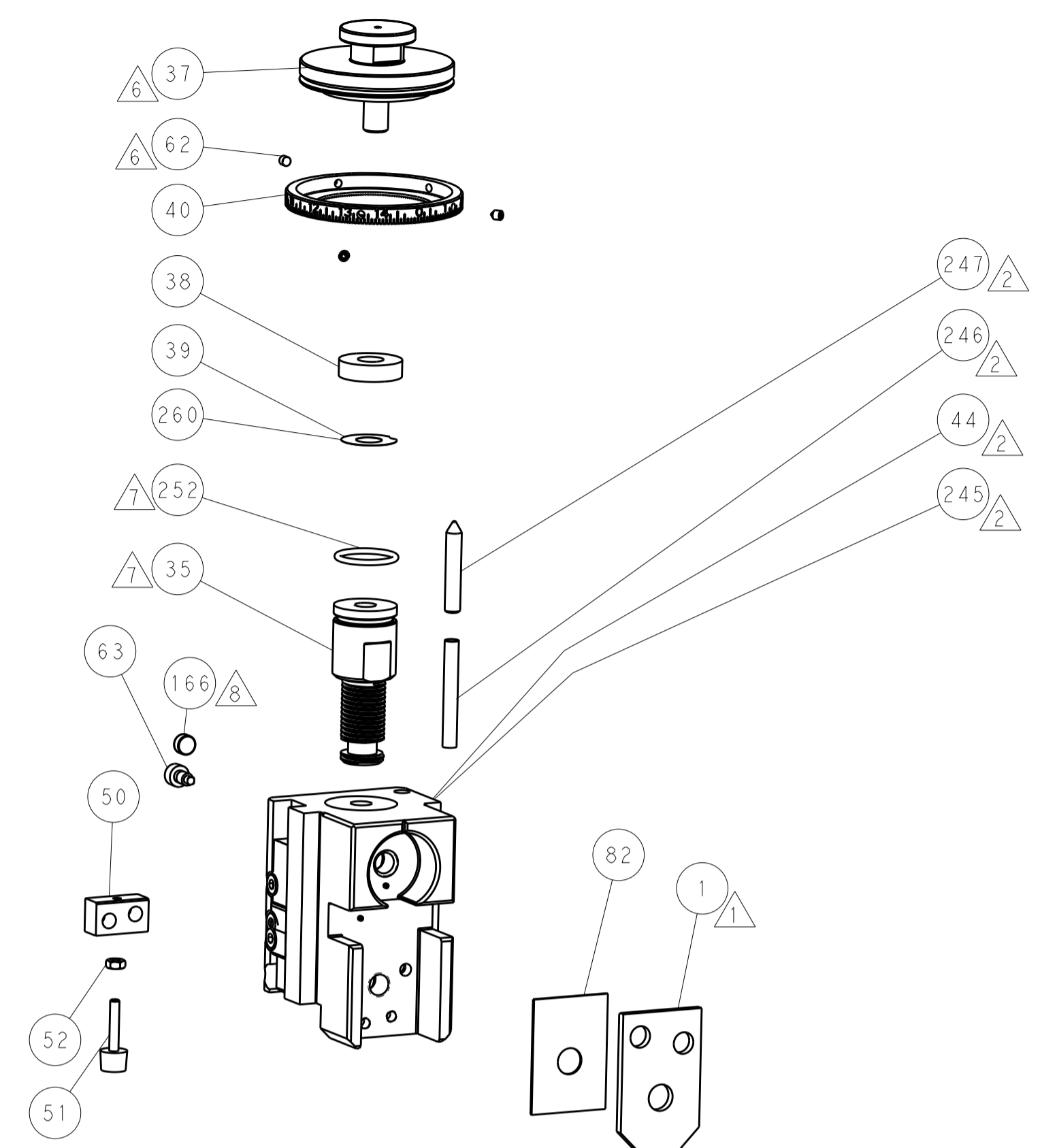
PNEUMATIC



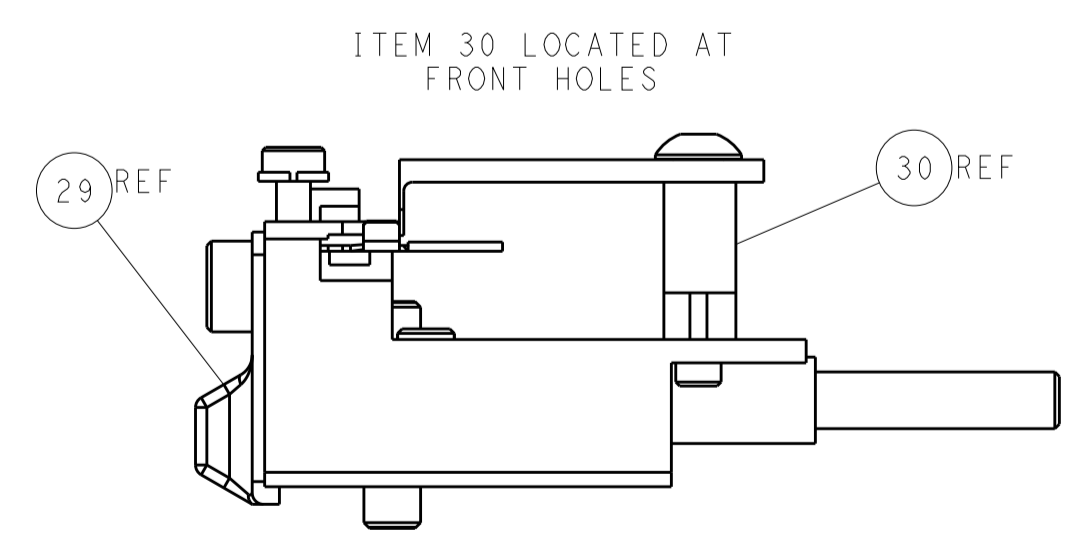
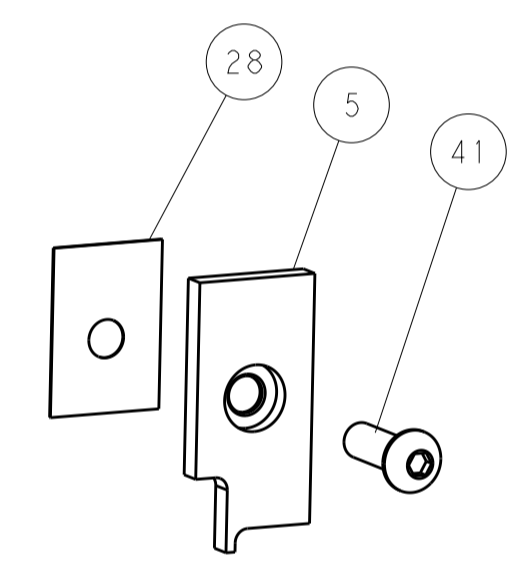
SERVO LATCH PLATE



CAM POSITIONS



TERMINAL SUPPORT LOCATION



FEED TRACK POSITION GUIDE BY WIRE BARREL

ATLANTIC VERSION
 Shown on sheets 1 of 4 & 2 of 4
 (Pacific version shown on sheets 3 of 4 & 4 of 4)

DIMENSIONS:		TOLERANCES UNLESS OTHERWISE SPECIFIED:		DWN X.ZHAO 07JAN2014		TE Connectivity	
mm	0 PLC ±0.5	1 PLC ±0.5	2 PLC ±0.13	3 PLC ±0.013	4 PLC ±0.001	APVD L.ZHANG 07JAN2014	Harrisburg, PA 17105-3608
MATERIAL:		FINISH:		NAME		Ocean Side Feed Applicator	
				SIZE		RESTRICTED TO	
				A1 00779 ©=2266192		Customer Accessible Production Drawing	
				SCALE		SHEET 2 of 4 REV B	

PACIFIC VERSION TERMINATOR INTERFACE ADAPTER	PART NUMBER	REVISION	DESCRIPTION	FEED TYPE	APPLICATOR STYLE CONVERSION CHART						
					CONVERT TO	PART NUMBERS REQUIRED					
	2-2266192-1	B	FINE CRIMP HEIGHT ADJUST	MECHANICAL	PNEUMATIC FEED	2119950-1	1338685-3	5-18022-5	2119641-2	2119799-1	2063440-1
					SERVO LATCH PLATE	2119951-1	-	8-2266192-5	1901094-3	-	2168400-6 (QUANTITY 2)
					SMART APPLICATOR	2161326-1	-	8-2266192-4	-	-	
	2-2266192-2	B	FINE CRIMP HEIGHT ADJUST	PNEUMATIC	MECHANICAL FEED	2119949-1	1338685-3	5-18022-5	2119653-2	-	-
					SERVO LATCH PLATE	2119951-1	-	8-2266192-5	1901094-3	-	2168400-6 (QUANTITY 2)
					SMART APPLICATOR	2161326-1	-	8-2266192-4	-	-	
	2-2266192-5	B	FINE CRIMP HEIGHT ADJUST	SERVO LATCH PLATE	MECHANICAL FEED	2119949-1	1338685-3	5-18022-5	2119653-2	-	-
					PNEUMATIC FEED	2119950-1	1338685-3	5-18022-5	2119641-2	2119799-1	2063440-1
	2-2266192-7	B	FINE CRIMP HEIGHT ADJUST	NONE	-	-	-	-	-	-	-
	7-2266192-7	A	CRIMP TOOLING KIT	-	-	-	-	-	-	-	-

APPLICATOR DATA		
CRIMP SIZE	TYPE	
WIRE 2.29 mm [.090]	F	
INSUL -	-	
APPLICATOR INSTRUCTIONS 408-10389		

TERMINAL DATA: TE TERMINAL		TE CRIMP SPECIFICATION	
TERMINAL NAME: TAB, FASTON, 110 SERIES			
WIRE STRIP LENGTH		INSULATION DIAMETER RANGE	
3.58-4.34 mm [.141-.171 IN]		Ø -	
TERMINAL APPLICATION SPECIFICATION	114-2036	-	-
TERMINALS APPLIED			
TE TERMINAL	TE TERMINAL	TE TERMINAL	TE TERMINAL
63932-1	62384-1	62122-1	

WIRE SIZE	CRIMP HEIGHT mm [INCH]	CRIMP HEIGHT REFERENCE SETTING
18 AWG	1.55+/-0.05 [.061+/-0.002]	6.0
20 AWG	1.45+/-0.05 [.057+/-0.002]	7.2
22 AWG	1.40+/-0.05 [.055+/-0.002]	7.7

- △ RECOMMENDED SPARE PARTS
- △ GREASE BEARING SURFACES LIGHTLY
- 3. LUBRICATE DAILY PER THE APPLICATOR INSTRUCTION SHEET SUPPLIED WITH THE APPLICATOR.
- △ APPLICATOR SPECIFIC DATA TO BE ENTERED INTO BLANK MEMORY CHIP AT ASSEMBLY. SEE BELOW FOR PART NUMBER:
 MECHANICAL FEED WITH "SMART APPLICATOR" CONVERSION: 8-2266192-4
 PNEUMATIC FEED WITH "SMART APPLICATOR" CONVERSION: 8-2266192-4
 SERVO FEED WITH "FINE CRIMP HEIGHT ADJUST": 8-2266192-5
- 5. ADJUSTMENT OF THE STRIPPER MAY BE REQUIRED WHEN MOVING THE APPLICATOR BETWEEN BENCH AND LEADMAKER APPLICATIONS.
- △ APPLY PART NUMBER 1-23419-5 LOCTITE TO THREADS OF ITEMS 62.
- △ GREASE THREADS, GROOVE AND O-RING ON ITEMS 139 & 152.
- △ MAGNET MUST BE ORIENTED CORRECTLY IN ORDER TO PROPERLY ACTUATE THE COUNTER.
- △ CRIMP HEIGHT REFERENCE SETTING WAS THE SETTING USED WHEN THE APPLICATOR WAS QUALIFIED AT THE FACTORY. ADJUSTMENT MAY BE NECESSARY WHEN RUNNING APPLICATOR IN THE FIELD.
- △ SPARE FEED CAM STORAGE LOCATION REFER TO INSTRUCTION SHEET FOR ADDITIONAL INFORMATION.
- △ TO CONVERT THE APPLICATOR TO A NON-CARRIER CUTTING STYLE, REMOVE ITEM 13 AND ATTACH TO THE LOCATION ON BACK SIDE OF THE HOUSING. REFER TO INSTRUCTION SHEET FOR ADDITIONAL INFORMATION.

*WARNING
 ON INSTALLATION, SET WIRE DISC, ITEM 40 TO LARGEST WIRE SIZE SETTING. USE OF SETTINGS BELOW MINIMUM REQUIRED CRIMP HEIGHT SETTING WILL CAUSE DAMAGE TO CRIMP TOOLING.

LOC	DIST	REV	DATE	BY	APPV
A	66	-	-	-	-

REV	DATE	BY	APPV	DESCRIPTION	DATE	BY	APPV
-	-	-	-	SEE SHEET 1	-	-	-
-	1	1	1	2119782-1	FINE ADJUST HEAD ASM, PACIFIC STYLE	-	251
-	-	-	1	2119640-1	PUSH ROD, AIR FEED	-	250
-	-	-	1	2079988-1	BUSHING, LCH5-12, MISUMI	-	249
-	1	1	1	1-22279-3	SPRING, COMPRESSION	-	246
-	1	1	1	7-18023-7	SCR, SKT HD CAP M3 X 4.0	-	241
-	-	2	-	2168400-6	SHCS, LOW HEAD, RoHS, M5 X 16	-	240
-	-	-	1	2119580-1	MECHANICAL FEED ASSEMBLY	-	239
-	-	-	1	2063440-1	AIR FEED MODULE	-	238
-	-	1	-	2119740-2	TAG, IDENTIFICATION	-	213
-	-	1	-	1901094-3	SPACER, FEEDER	-	198
-	-	-	2	21045-3	RING, RETAIN, EXTERN, 3/16 CRESCENT	-	172
-	1	1	1	994969-1	MAGNET, RARE EARTH HIGH ENERGY	-	166
-	REF	REF	REF	994970-2	COUNTER, MAGNETIC	-	164
-	-	-	1	240638-1	SPRING, FEED FINGER	-	163
-	1	1	1	8-21084-1	O-RING, .801 ID, .070 DIA. MAT.	-	152
-	-	-	1	2119641-2	FEED CAM, AIR FEED	-	151
-	1	1	1	2119798-2	DETENT PIN	-	145
-	1	1	1	2079383-8	SCR, BHSC, RoHS (M4 X 16)	-	144
-	4	4	4	2168400-5	SHCS, LOW HEAD, RoHS, M4 X 20	-	143
-	-	-	1	2119653-2	FEED CAM, POST FEED	-	142
-	1	1	1	1-2119656-0	APPLICATOR BASIC ASSEMBLY, SF	-	141
-	1	1	1	2119650-1	RAM, ASIAN STYLE, SIDE FEED	-	140
-	1	1	1	2119092-2	BOLT, ADJUSTMENT	-	139
-	-	-	1	3-23627-7	PIN, RETAIN, GRVD, 3/16 X .854	-	137
-	-	-	1	2119799-1	HOLDER, FEED FINGER, AF	-	136
-	-	REF	-	SEE NOTE 4	MEMORY CHIP, PROGRAMMED	-	135
-	-	1	-	1633743-1	SERVO FEED LATCH ASM	-	133
-	1	1	1	1-18028-2	WASHER, FLAT, REG M4	-	119
-	-	REF	-	2119944-1	FEED FINGER ASSEMBLY, SF	-	117
-	1	1	1	455888-6	SPACER, CRIMPER	-	82
-	1	1	1	2119956-1	DOCUMENTATION PACKAGE	-	71
-	1	-	1	2119740-1	TAG, IDENTIFICATION	-	67
-	2	2	2	2168078-1	SCREW, DRIVE, RH, RoHS, 2 x .188	-	66
-	1	1	1	2119793-1	LIMITER, ADJUSTMENT BOLT	-	63
-	3	3	3	992763-5	SCR, SET, SOC, CONE POINT, M3 x 4.0	-	62
-	-	-	1	5-18022-5	SCR, HEX HD CAP, M4 X 6.0	-	59
-	-	-	1	1338685-1	PAWL, FEED	-	56
-	2	2	2	1-2168083-0	SCR, SKT HD CAP, RoHS, M4 X 10	-	53
-	1	1	1	5018030-1	NUT, HEX, REG, RoHS, M3	-	52
-	1	1	1	811242-5	BUMPER, HOLD DOWN	-	51
-	1	1	1	690753-2	SPACER, TONKER	-	50
-	-	-	1	18023-9	SCR, SKT HD CAP M4 X 6.0	-	49
-	-	-	1	2119652-1	FEED CAM, PRE FEED	-	48
-	1	1	1	2079383-7	SCR, BHSC, RoHS (M8 X 25)	-	41
-	1	1	1	2119645-1	DISC, NUMBERED FA WIRE ADJUSTMENT	-	40
-	1	1	1	2119957-1	APPLICATOR SHIM PACK	-	39
-	1	1	1	1-2119644-2	RAM WASHER, PRECISION	-	38
-	1	1	1	1752356-1	SUPPORT, TERMINAL	-	34
-	2	2	2	2079383-5	SCR, BHSC, RoHS (M4 X 20)	-	33
-	1	1	1	2161328-1	HEX HEAD, FLANGED, M5 x 8mm LONG	-	32
-	1	1	1	1320908-6	SPACER, STRIP GUIDE	-	30
-	1	1	1	2119959-4	ASSEMBLY, STRIP GUIDE	-	29
-	1	1	1	455888-3	SPACER, CRIMPER	-	28
-	1	1	1	240792-1	DRAG, TERMINAL	-	25
-	1	1	1	1320928-2	STRIP GUIDE	-	24
-	1	1	1	2168083-2	SCR, SKT HD CAP, RoHS, M4 X 8.0	-	21
-	1	1	1	1-18028-2	WASHER, FLAT, REG M4	-	20
-	1	1	1	2119533-1	STRIPPER, SIDE FEED	-	19
-	1	1	1	2119806-1	INSERT, SHEAR	-	13
-	1	1	1	3-22280-3	SPRING, COMPRESSION	-	12
-	1	1	1	1-356885-4	STOP, SHEAR	-	11
-	1	1	1	2119805-1	SHEAR HOLDER, FRONT	-	10
-	1	1	1	1803095-1	FLOATING SHEAR, FRONT	-	9
-	1	1	1	2-1633933-6	ANVIL, COMBINATION	-	8
-	-	-	-	-	-	-	7
-	-	-	-	-	-	-	6
-	1	1	1	2119757-8	DEPRESSOR, SHEAR	-	5
-	-	-	-	-	-	-	4
-	-	-	-	-	-	-	3
-	-	-	-	-	-	-	2
-	1	1	1	4-456406-1	CRIMPER, WIRE PREMIUM	-	1
-	-	-	-	-	-	-	-

PACIFIC VERSION
 Shown on sheets 3 of 4 & 4 of 4
 (Atlantic version shown on sheets 1 of 4 & 2 of 4)

DIMENSIONS:		TOLERANCES UNLESS OTHERWISE SPECIFIED:		DATE	BY	APPV
mm	0 PLC	±	0.5	07JAN2014	J. ZHAO	
	1 PLC	±	0.13	07JAN2014	L. ZHANG	
	3 PLC	±	0.013		T. ELBIN	
	4 PLC	±	0.001			
	ANGLES	±	0.0001			
	FINISH					

NAME		TE Connectivity	
Ocean Side Feed Applicator		Harrisburg, PA 17105-3608	
SIZE	CAGE CODE	DRAWING NO	RESTRICTED TO
A1	00779	C=2266192	
Customer Accessible Production Drawing		SCALE	SHEET 3 OF 4
		1:2	REV B

LOC		DIST		REVISIONS			
A	66	P	LTM	DESCRIPTION	DATE	DWN	APVD
		-		SEE SHEET 1			

FEED TYPE MECHANICAL



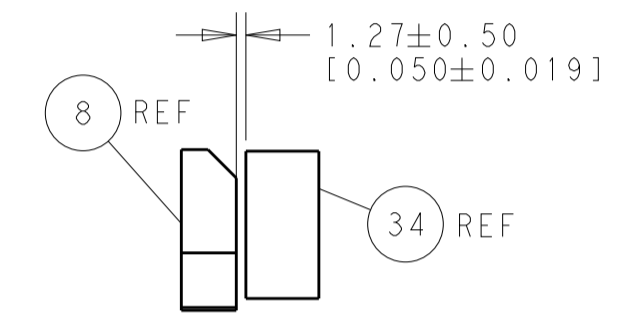
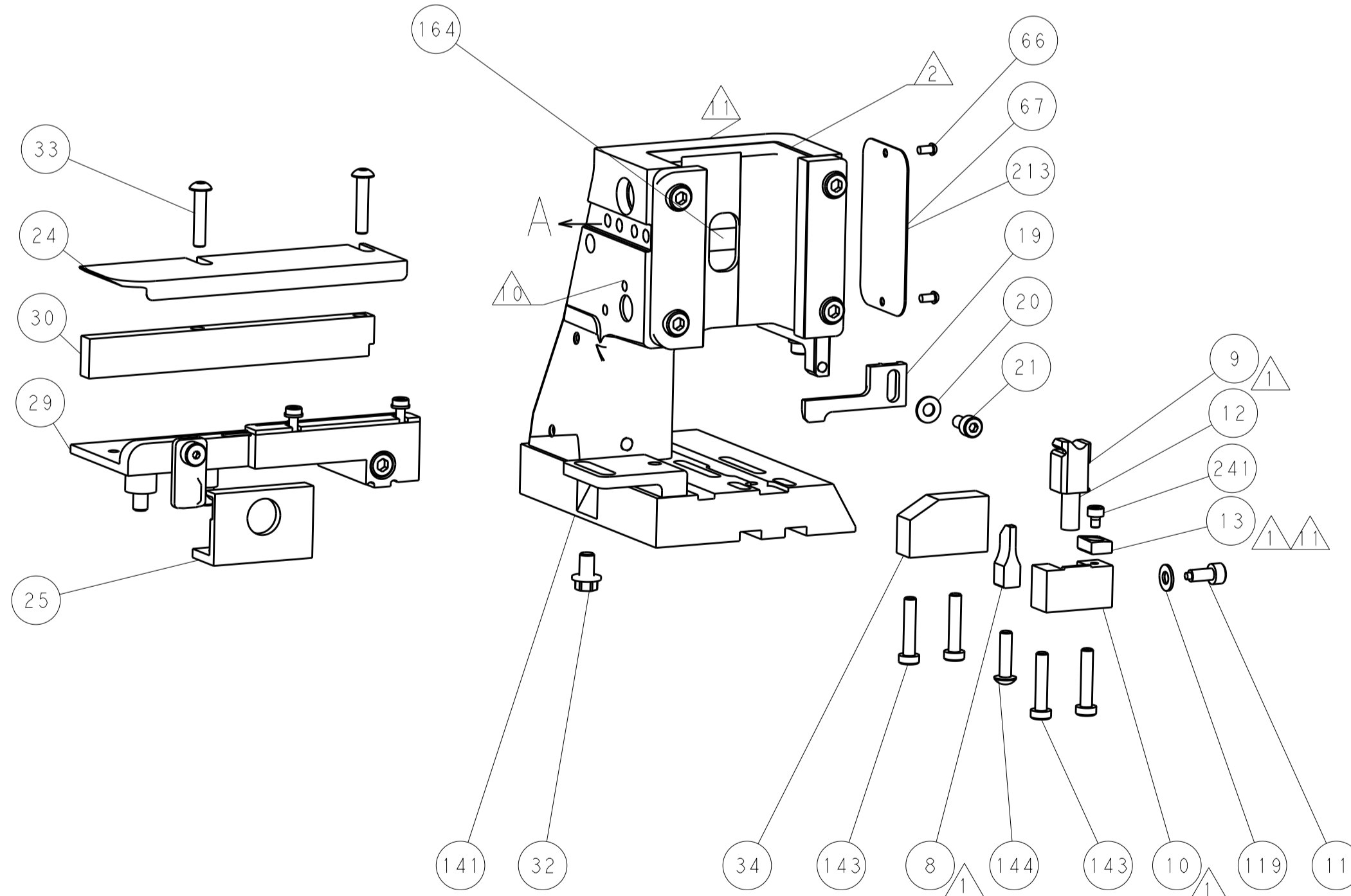
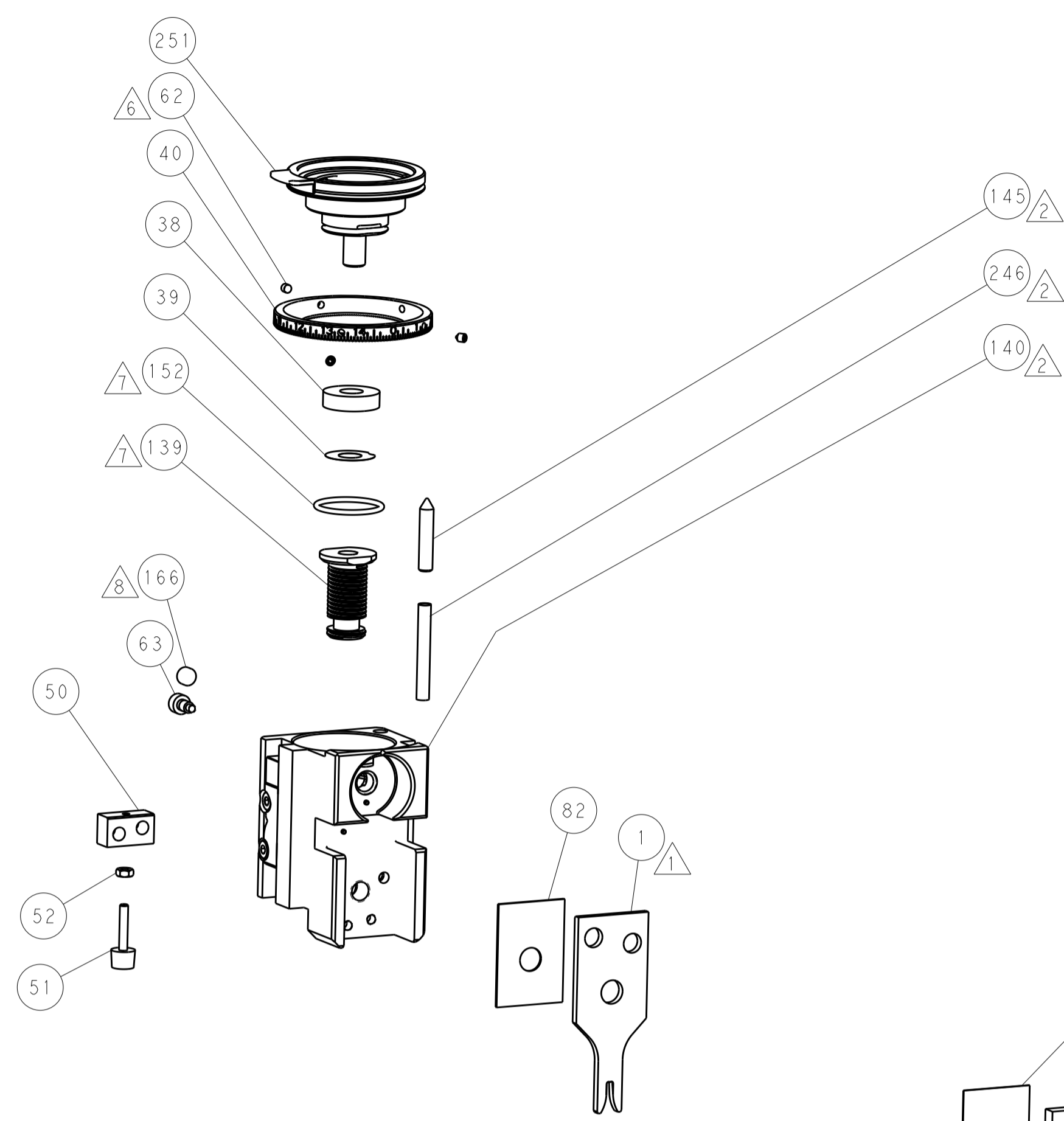
PNEUMATIC



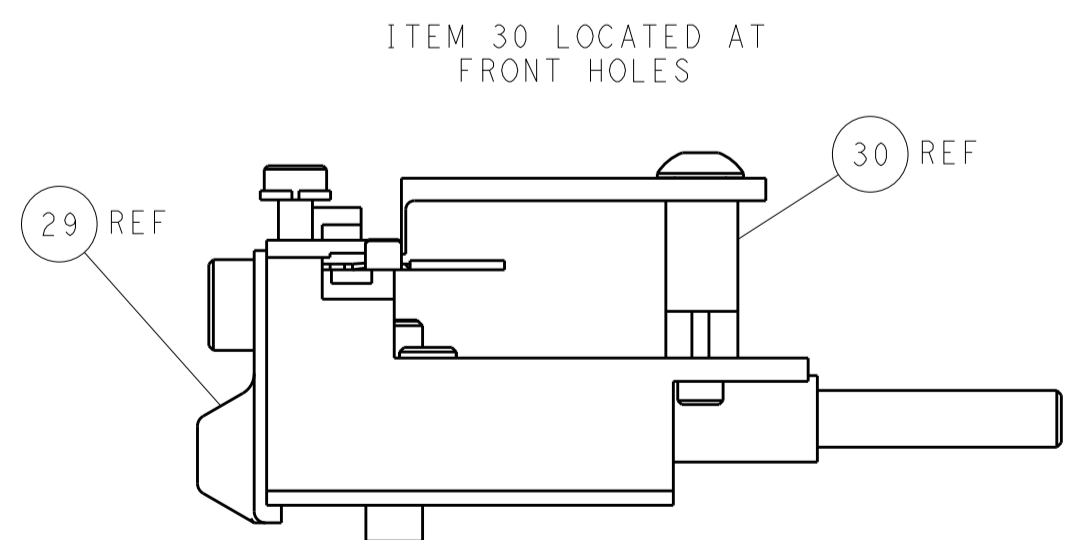
SERVO LATCH PLATE



CAM POSITIONS



TERMINAL SUPPORT LOCATION



FEED TRACK POSITION
GUIDE BY WIRE BARREL

PACIFIC VERSION
 Shown on sheets 3 of 4 & 4 of 4
 (Atlantic version shown on sheets 1 of 4 & 2 of 4)

DIMENSIONS:		TOLERANCES UNLESS OTHERWISE SPECIFIED:		DWN X ZHAO 07JAN2014		STE TE Connectivity	
mm	0 PLC ±0.5	1 PLC ±0.5	2 PLC ±0.13	3 PLC ±0.013	4 PLC ±0.001	APVD T. ELBIN 07JAN2014	Harrisburg, PA 17105-3608
MATERIAL:		FINISH:		NAME		Ocean Side Feed Applicator	
				SIZE		RESTRICTED TO	
				A1 00779		C=2266192	
				Customer Accessible Production Drawing		SCALE 1:2 SHEET 4 OF 4 REV B	