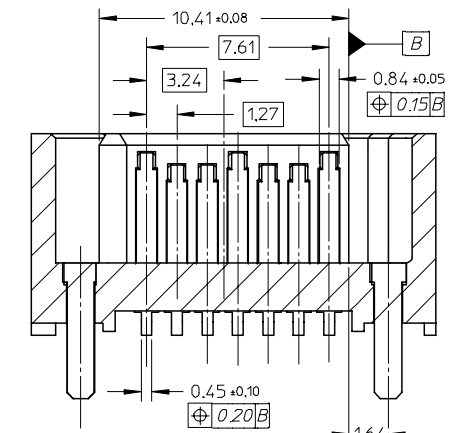
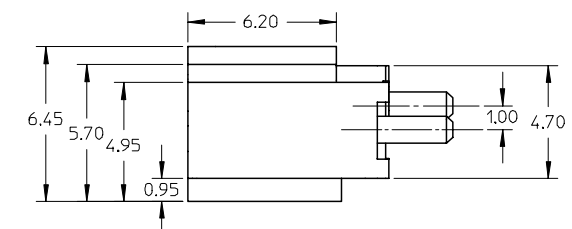
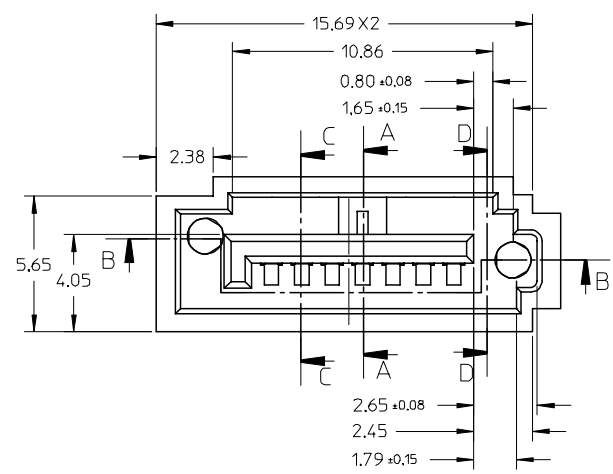
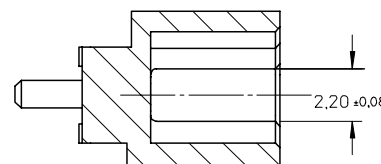


SECTION A-A

SECTION C-C



SECTION B-B

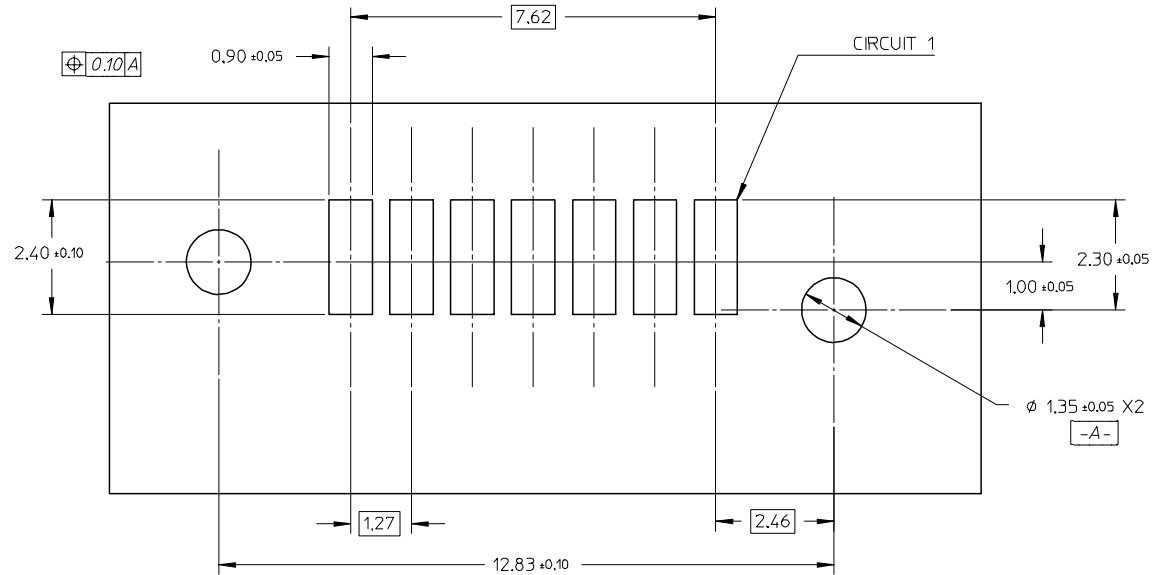


SECTION D-D

EC NO: SH2005-0037 DRWN:GRMA 2004/10/25 CHKD: 2004/10/26 APPR: YTYAP 2004/10/28	QUALITY SYMBOLS ▽ = 0 ▽ = 0	GENERAL TOLERANCES (UNLESS SPECIFIED)		SCALE 5:1	DESIGN UNITS METRIC	THIRD ANGLE PROJECTION	REVISE ON CAD ONLY
		mm	INCH	DIMENSION STYLE MM ONLY		TITLE HIGH SPEED CONNECTOR 1.27MM PITCH VERTICLE SMT SOLDER TAIL	
C	DESCRIPTION	4 PLACES	± ---	± ---	DRAWN BY GRATE MA	DATE 2004/02/02	MATERIAL NO. SEE SHEET 2
		3 PLACES	± ---	± ---	CHECKED BY YAJUN	DATE 2004/02/02	
		2 PLACES	± 0.15	± ---	APPROVED BY SAM	DATE 2004/02/02	SHEET NO. 1 OF 2
		1 PLACE	± 0.25	± ---	THIS DRAWING CONTAINS INFORMATION THAT IS PROPRIETARY TO MOLEX INCORPORATED AND SHOULD NOT BE USED WITHOUT WRITTEN PERMISSION		
		ANGULAR ± 1 °		DRAFT WHERE APPLICABLE		MUST REMAIN WITHIN DIMENSIONS	

NOTES:

- MATERIAL:
HOUSING: HIGH TEMPERATURE THERMAL PLASTIC, GLASS FILLED, UL94V-0, COLOR : BLACK
TERMINAL: BRASS
POST: BRASS
- TERMINAL PLATING :
CONTACT AREA : (a) GOLD FLASH
(b) GOLD, THICKNESS=0.76 MICRON MINIMUM
(c) GOLD, THICKNESS=0.38 MICRON MINIMUM
SOLDER TAIL: TIN-LEAD OR TIN, THICKNESS=1.27 MICRON MINIMUM,
UNDER PLATE: NICKEL, THICKNESS=1.27 MICRON MINIMUM.
- POST PLATING: UNDER PLATE: NICKEL, THICKNESS=1.25 MICRON MINIMUM
TIN/LEAD OR TIN, THICKNESS=1.9 MICRON MINIMUM OVER ALL
- PACKAGING: PK-67800-002
- PRODUCT SPECIFICATION REFER TO PS-67491-001
- RECOMMENDED SOLDERING PROCESS: IR PROCESS.



RECOMMENDED P.C.B LAYOUT
CONNECTOR SIDE

678005025	SEE NOTE2(c)	3.45	PURE TIN
678005022	SEE NOTE2(b)		
678005021	SEE NOTE2(a)		
678005015	SEE NOTE2(c)		
678005012	SEE NOTE2(b)	3.05	TIN-LEAD
678005011	SEE NOTE2(a)		
678005005	SEE NOTE2(c)		
678005002	SEE NOTE2(b)	2.65	
678005001	SEE NOTE2(a)		
678001025	SEE NOTE2(c)	3.45	
678001022	SEE NOTE2(b)		
678001021	SEE NOTE2(a)		
678001015	SEE NOTE2(c)	3.05	
678001012	SEE NOTE2(b)		
678001011	SEE NOTE2(a)	2.65	
678001005	SEE NOTE2(c)		
678001002	SEE NOTE2(b)		
678001001	SEE NOTE2(a)		
MATERIAL NO	PLATING TYPE	DIM A	REMARK

EC NO: SH2005-0037 DRWN: GRMA 2004/10/25 CHKD: 2004/10/26 APPR: YTYAP 2004/10/28	QUALITY SYMBOLS ▽ = 0 ▽C = 0	GENERAL TOLERANCES (UNLESS SPECIFIED)		SCALE 5:1	DESIGN UNITS METRIC	THIRD ANGLE PROJECTION	REVISE ON CAD ONLY
		mm	INCH	DIMENSION STYLE MM ONLY		TITLE HIGH SPEED CONNECTOR 1.27MM PITCH VERTICLE SMT SOLDER TAIL	
DESCRIPTION	4 PLACES	± ---	± ---	DRAWN BY GRATE MA	DATE 2004/02/02	MOLEX INCORPORATED	
	3 PLACES	± ---	± ---	CHECKED BY YAJUN	DATE 2004/02/02	MATERIAL NO. SEE CHART	DOCUMENT NO. SD-67800-005
	2 PLACES	± 0.15	± ---	APPROVED BY SAM	DATE 2004/02/02		SHEET NO. 2 OF 2
	1 PLACE	± 0.25	± ---	THIS DRAWING CONTAINS INFORMATION THAT IS PROPRIETARY TO MOLEX INCORPORATED AND SHOULD NOT BE USED WITHOUT WRITTEN PERMISSION			
	ANGULAR ± 1 °		DRAFT WHERE APPLICABLE				
	MUST REMAIN WITHIN DIMENSIONS						